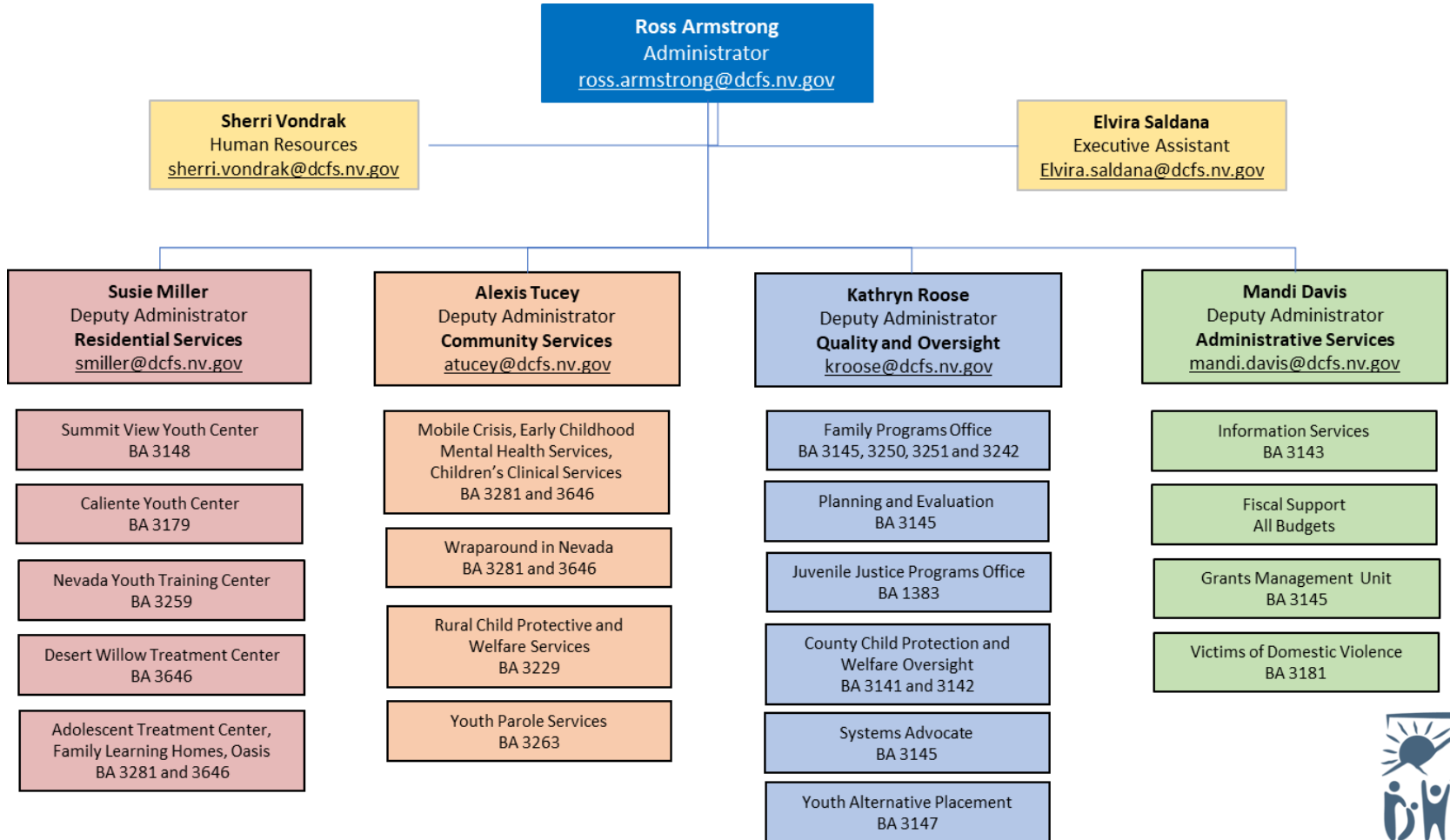


# DCFS Organizational Chart



# Summary by Budget Account

Governor Recommends Budget (G01)		Fiscal Year 2020				Fiscal Year 2021			
409	Child and Family Services	General Fund	Federal Funds	Other	Total	General Fund	Federal Funds	Other	Total
1383	Juvenile Justice Services	2,968,157	434,937	8,750	3,411,844	3,004,574	435,067	8,750	3,448,391
3141	Washoe County Child Welfare	17,834,542	19,025,256	133,987	36,993,785	18,022,803	19,385,112	133,987	37,541,902
3142	Clark County Child Welfare	53,981,447	58,183,731	9,774	112,174,952	54,627,891	59,475,999	9,774	114,113,664
3143	Information Services	4,635,608	3,364,861	462,052	8,462,521	4,645,530	3,381,949	460,923	8,488,402
3145	Children, Youth and Family Admin	6,867,379	29,678,623	3,633,702	40,179,704	6,824,687	29,938,594	3,598,357	40,361,638
3147	Youth Alternative Placement	2,184,481	-	2,186,312	4,370,793	2,184,481	-	2,186,312	4,370,793
3148	Summit View Youth Center	7,113,064	-	69,940	7,183,004	7,734,588	-	69,940	7,804,528
3179	Caliente Youth Center	10,146,666	-	525,156	10,671,822	12,524,334	-	525,156	13,049,490
3181	Victims of Domestic Violence	-	-	3,236,683	3,236,683	-	-	3,206,175	3,206,175
3201	Children's Trust Account	-	-	1,528,711	1,528,711	-	-	1,616,349	1,616,349
3229	Rural Child Welfare	8,667,502	8,224,667	6,522,841	23,415,010	9,096,462	8,365,057	6,596,863	24,058,382
3242	Child Welfare Trust	-	-	263,560	263,560	-	-	274,499	274,499
3250	Transition from Foster Care	-	-	1,582,219	1,582,219	-	-	1,501,693	1,501,693
3251	Review of Death of Children	-	-	589,686	589,686	-	-	588,902	588,902
3259	Nevada Youth Training Center	8,080,517	-	257,869	8,338,386	9,053,570	-	257,869	9,311,439
3263	Youth Parole Services	3,334,652	-	3,441,454	6,776,106	3,408,818	-	3,521,463	6,930,281
3281	Northern NV Child and Adolescent Services	4,320,852	-	6,232,601	10,553,453	3,642,986	-	7,372,610	11,015,596
3646	Southern NV Child and Adolescent Services	12,907,165	2,127,564	13,717,756	28,752,485	12,488,911	436,444	14,599,571	27,524,926
<i>Child and Family Services Total</i>		<i>143,042,032</i>	<i>121,039,639</i>	<i>44,403,053</i>	<i>308,484,724</i>	<i>147,259,635</i>	<i>121,418,222</i>	<i>46,529,193</i>	<i>315,207,050</i>
<i>Biennial Total</i>						<i>290,301,667</i>	<i>242,457,861</i>	<i>90,932,246</i>	<i>623,691,774</i>

