



PRESIDENT/CEO
CO-FOUNDER
LYNDA TACHE



Introduction

Collaboration Center Foundation was established in February 2019, to serve and support the lives of families and individuals living with all Intellectual, Developmental and Physical Disabilities of ALL ages, by providing the largest disability resource network hub in Nevada. In August of 2020, CCF Acquired the former 5 acre WHY Ranch and today it proudly operates as Collaboration Center at Las Vegas Ranch.



Mission/Vision

Collaboration Center is a safe community for inclusion and a disability resource network, focused upon family and peer engagement, social interaction, recreation, therapy, and education to enhance the lives of those touched by Intellectual, Developmental, and Physical Disabilities (ID/DD/PD) of ALL ages.

Our vision is to create the largest disability resource network in the state that will help every individual and family in need of disability services get connected to the best resources for their needs, while creating a safe campus community that meets families where they are and promotes health and wellness, physical and mental health, and strong supportive relationships.



The Community Need

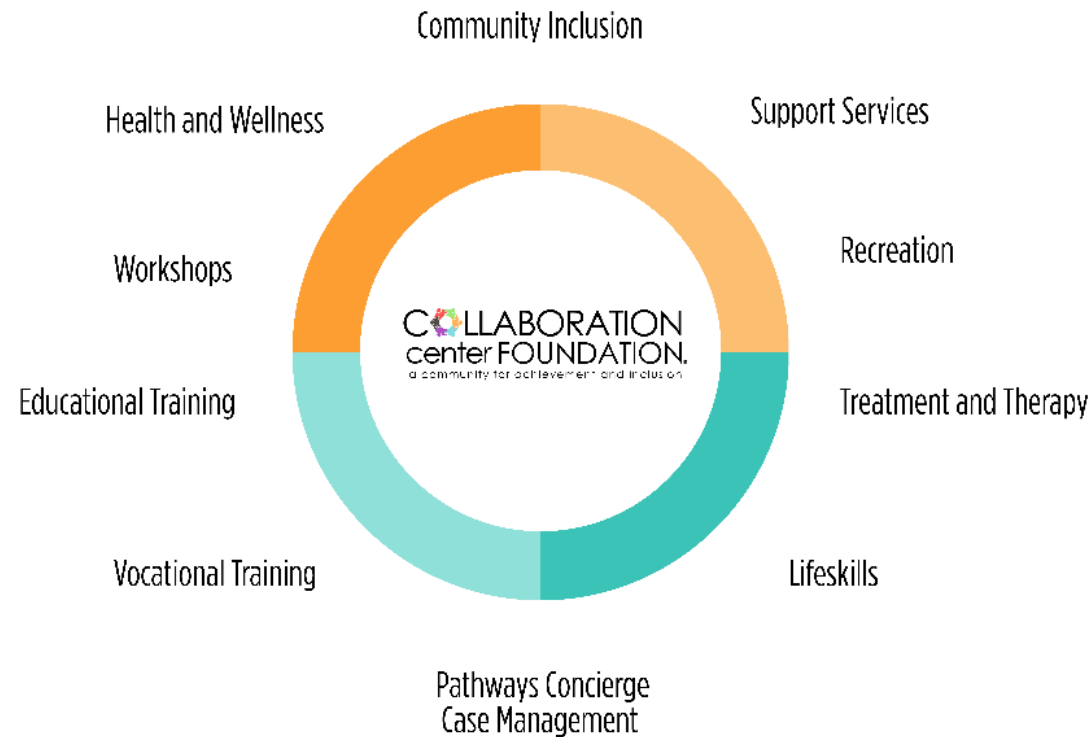
There is increasing prevalence in Intellectual, Developmental and Physical Disabilities according to the Center for Disease Control and Prevention National Atlanta, Georgia.

- Autism affects 1 in 54 children (Just updated by CDC from 1 in 59)
- Down Syndrome affects 1 in every 691 births
- Cerebral Palsy affects 1 in every 323 births
- There are approximately 850 children in Southern Nevada with some type of hearing loss, and over 15,800 children and youth in Nevada are visually impaired or legally blind.
- Fetal Alcohol Syndrome Disorder is on the rise and the cost of every untreated child is 2 million over a lifetime
- The cost to society of every untreated child with autism or related neurodevelopmental disability is **2-4 million over a lifetime**
- Clark County School District reports over **37,000 students** (ages 3-19) are enrolled in Special Education programs with one or more disability categories



The Crisis in Southern Nevada

- Long waitlists (several thousand children and youth are on diagnostic and service waitlists in Southern Nevada).
- During the Pandemic, children, and youth with intellectual and developmental disabilities (including autism), are falling way behind socially, intellectually, emotionally and behaviorally due to isolation, and are substantially regressing which will cost our society greatly; mental health services are lacking with our special needs community where social anxiety and depression are very prevalent and can lead to isolation and suicide.
- Gross shortage of professionals and licensed providers in Nevada covering many service disciplines which delays Early Intervention and ongoing treatment. **Nevada has the least number of Developmental Pediatricians in the country.**
- Gaps in Medicaid and insurance coverage for many disability types
- Lack of coordinated providers working together to treat individuals with multiple disabilities to produce greater outcomes
- Lack of health and wellness programs and recreation for those living with special abilities that cause other life-long health challenges
- Lack of natural workforce and vocational training support
- Inclusion is not as prevalent as it should be



Current and Future services being provided at the Ranch with Collaboration Center Foundation and multiple community organizations:

- Concierge Case Management and Care Coordination Services
- Medical Triage and Healthcare Transition Multi-disciplinary Clinic with Family Medicine, Pediatrics, Psychiatry, and more
- Speech Therapy
- Occupational Therapy
- Physical Therapy
- Behavior Therapy
- Education Therapy and Academic Tutoring for Special Education students with all disabilities
- Marriage and Family Counseling
- Grandparent Support Groups, Sibling workshops, and Parent Training Services
- Community Living Training weekends and life skills training
- Camps, special birthday parties, holiday events and more



Jack Sholeff Memorial Multi-disciplinary and Medical Transition Clinic Under Pathways at Collaboration Center Foundation

This unique clinic, spearheaded by Dr. Greg Sholeff, will serve individuals and family members that are experiencing one or more physical, developmental and/or mental health conditions through a vast network made up of Nevada's top health professionals and medical groups.

Additionally, healthcare transition for youth with disabilities that are turning into adults is becoming an overwhelming challenge in our communities. Thousands of youth in Nevada are aging into adulthood, therefore, this will be the only clinic in Nevada that has this service as one of its primary goals, increasing the quality of life for generations and saving our community billions over lifetimes.



Services to Come with Capital Campaign 12 million Buildout (Upon completion, will serve over 18,000 individuals and family members)

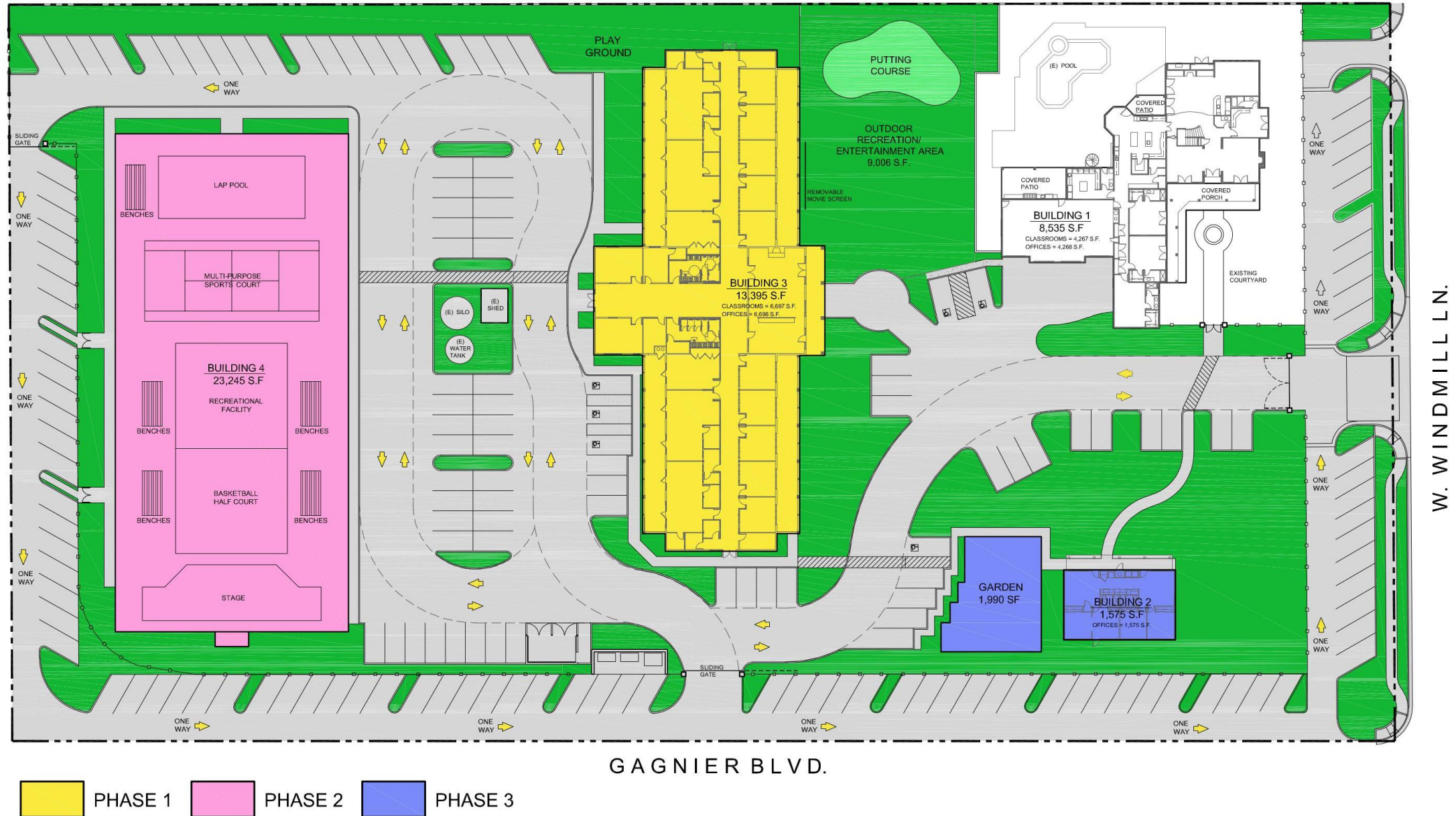
- ~ Adaptive Gym with exercise equipment and group glasses
- ~ Putting green
- ~ Adaptive playground
- ~ Working grab n' go café with prep kitchen
- ~ 16,000+ sq. ft. of additional treatment, therapy and education space serving wait list individuals
- ~ Family recreation area with movies on the lawn
- ~ Working garden
- ~ Event and Sports Recreation area with an adaptive community pool



Collaboration Center Foundation is excited to announce that the organization was awarded 6 million dollars from the state this past session to fund half of its program expansion and campus buildout. We have 6 million more to go...

With your help, we can get there!

Campus Site Plan











SAVE THE DATE
Blue Night Lights Family
Resource Fair and
Autism World Day
Celebration
April 2, 2022 During
Autism Awareness Month
Pathways@collablv.org



Thank you!

Tours and more organizational info contact

Ltache@CollabLV.org

702.217.4194

Pathways Case Management and Care
Coordination Referral Program contact

Renee Morales

Pathways@CollabLV.org

702.329.3208
