



QUARTER 7
PIP 4.1.1 (A)
Statewide

PIP 4.1.1 (A)

4.1.1(A) Develop data reports that have been identified to measure timeliness to permanency.

In early 2012 the Department of Children and Families (DCFS) negotiated a data sharing and services agreement with Chapin Hall for the purpose of providing Nevada with access to information management and research tools that could help Nevada improvement of outcomes for Nevada Children and Families. In May of 2012 Nevada was provided the portal access to the Foster Care Data Archive (FCDA).

Through this service Chapin Hall provides Nevada DCFS, all statewide Child Welfare Agencies and the Court Improvement Program (CIP) with the ability to access the FCDA. All parties have the ability to access and generate various reports, including reports amenable to such federal outcomes as: time to adoption, time to reunification, placement stability and foster care re-entry. The FCDA is built on a longitudinal model, which means that it's focused on answering entry cohort-based questions. Chapin Hall indicates that the database is designed this way because entry cohort-based questions lead to the most complete picture of all children's experiences as they move through the foster care system.

Also, the FCDA provides information on a number of demographic and spell-related child characteristics. The database will allow Nevada to analyze the experience of subgroups of children based on those characteristics, and to analyze trends based on admission, permanency, placement stability and re-entry. This technological advantage is a very new way for Nevada to look at permanency data. In moving forward DCFS efforts will be focused on understanding, analyzing, translating and disseminating the results concerning trends, comparisons and findings to various stakeholders. The possibilities for queries to the database are profuse. Please find attached as Appendix 1 reports that Nevada can now generate from the Chapin Hall FCDA (statewide). While not attached due to the multitude of the reports, Nevada can also generate these reports for each and every county in the state. Other reports can be generated based on individual queries.

Furthermore, in PIP Quarter 1 a statewide workgroup was formed to identify needed reports as it related to timeliness to permanency. Clark County indicated their agency had numerous reports and a Management Report Dashboard. At that time Clark County did not identify any further reports that needed to be developed to measure timeliness to permanency but did identify reports that were already created and being utilized by Clark County. Clark County utilizes Cognos which is a corporate performance and business intelligence (BI) software tool also known as a data warehouse. Data is extracted from UNITY (Nevada's SACWIS system) each night around 10:00 PM, and uploaded into Cognos. Clark County has the ability to generate many data reports as it relates to permanency. Please find attached as Appendix 2 a screen printout of the Clark County Cognos Management Reports Dashboard and a listings of the specific permanency reports that are currently in use by Clark County.

Lastly, the Rural Region and Washoe County utilizes UNITY reports that are used by managers and supervisors to assist in measuring timeliness to Permanency. Please see a list of those reports and attached samples of reports in Appendix 3.



QUARTER 7
PIP 4.1.1 (A)
Statewide
Appendix 1

Logged in as jsaragonNV | Logout

Current State: Nevada [New Search](#)**Databases**[All events](#)[All spells](#)[Benchmarks](#)[Trends](#)[Profile Report](#)

User Guide

Welcome to the FCDA website. This User Guide will introduce you to the main functions of the Data Archive; define key terms, concepts, and codes that are used throughout the site; and help you interpret the results of your queries. We suggest that you read this guide before getting started, and that you refer back to it as you explore your state's data.

Table of Contents

NEW! User Guide[Key terms](#)[Variable names and codes](#)[Annotated examples](#)[Key terms](#)[Variable names and codes](#)[Annotated examples](#)**NEW! Recipes**

Copyright © 2001–2012. University of Chicago; Chapin Hall at the University of Chicago; Center for State Foster Care and Adoption Data. All rights reserved.

Databases

All events

All spells

Benchmarks

Trends

Profile Report

NEW! User Guide

Key terms

Variable names and codes

Annotated examples

NEW! Recipes

Key Terms

The Foster Care Data Archive organizes children's experiences in foster care based on the periods of time that children are in care and the events that happen to them while they are in care. Familiarizing yourself with the terms below will help you understand how the database approaches these timeframes and how that approach influences the kinds of questions you can answer using the web tool.

Event

Events either begin or end a child's placement in a foster care setting; therefore, an event can either be a placement event or an exit event. Entries into foster care are placement events because they represent the child's first placement upon entering care. Placement moves are also placement events because they represent the beginning of a new placement. Exits from foster care are exit events. Note that placement moves are characterized as **placement events** (because they involve placement in a new setting), not as exits from old placements; the only type of exit event is an exit from foster care altogether.

Spell

A **spell** is a continuous period of time that a child spends in foster care. A placement event starts a spell; an exit event ends a spell. A child may experience multiple placement events (i.e., movements) during his/her spell. A child may also have more than one spell—this is the case when a child re-enters care after being discharged.

On the **Multistate FCDA** website, the following criteria apply to the definition of a spell (state-specific site rules may vary):

- Spells that are fewer than five days long are not included.
- A spell is not included if, at the start of the spell, the child is over age 17.
- If a child exits care by running away, reaching the age of majority, or exiting to a destination classified as "other/unknown" (see codes XRY, XRM, and XOT in *Variable Names and Codes*) and the child comes back into care within seven days of exit, the re-entry is bridged to form one spell, rather than identified as a new spell.

Censor date

The **censor date** is the calendar day as of which the database is updated. Therefore, a child's experience in foster care can only be observed as of the censor date.

Censored spells

When a child placed in foster care is still in foster care as of the censor date, the child's placement history is incomplete because information about his or her date of exit from care is unknown. In this situation, we say that the child's spell is **censored**. For example, assume that the censor date is December 31, 2010. If a child enters foster care on January 1, 2010 and exits care on June 30, 2010, we can determine that the length of that child's spell was six months. However, if a child who entered care on January 1, 2010 was still in care on December 31, 2010—the censor date—we cannot determine the child's length of stay because we do not yet know whether or when after December 31, 2010 the child exited foster care.

Base population

The first step of running a web tool inquiry is to define the group of children you are interested in studying. This is your **base population**.

Comparison population

The **comparison population** is the group of children to which you will compare your base population.

Geographic Comparison

The **Geographic Comparison** option allows you to compare your base population to the group of children with the same characteristics from a different geographic location. For example, if your base population contains infants entering care in County A in 2007, Geographic Comparison allows you to compare that group to infants entering care in County B in 2007.

Population Comparison

The **Population Comparison** option allows you to compare your base population to a different group of children from the same geographic location. For example, if your base population contains infants entering care in County A in 2007, Population Comparison allows you to compare that group to infants entering care in County A in 2008.

Demographic Comparison

The **Demographic Comparison** option allows you compare your base and comparison populations on a variety of demographic and spell-related variables. For example, if your base population is infants entering care in County A in 2007 and your comparison population is infants entering care in County B in 2007, Demographic Comparison allows you to examine how those groups are similar or different with respect to gender, race/ethnicity, first placement type, length of stay, and a number of other variables.

Entry cohort	An entry cohort is a group of children who all enter foster care during the same period of time. When selecting groups of children for analysis, the entry cohort option directs the system to select spells that started between two specific dates entered by the user (inclusive).
Point-in-time	When selecting groups of children for analysis, the point-in-time option directs the system to select spells that were active on one specific date entered by the user. Point-in-time analyses are sometimes referred to as cross-sectional or census analyses.

Copyright © 2001–2012. University of Chicago; Chapin Hall at the University of Chicago; Center for State Foster Care and Adoption Data. All rights reserved.

Databases

All events

All spells

Benchmarks

Trends

Profile Report

NEW! User Guide

Key terms

Variable names
and codes

Annotated examples

NEW! Recipes

Variable Names and Codes

The Foster Care Data Archive provides information on a number of demographic and spell-related child characteristics. The database also allows you to analyze the experience of subgroups of children based on those characteristics. The list below contains the kinds of data that are available as well as translations of codes that categorize the data; these codes will appear in the output when you run analyses using the web tool.

NOTE: The codes below are those used in the Multistate site—the portion of the site that enables you to compare your state to others in the database. On the Multistate site, all states use the same codes so that data can be compared across states. If your state also has a state-specific site, you may find that some of the codes used on your state-specific site are different from those used on the Multistate site; this is because your state-specific site captures certain variables/values according to specific requirements in your state. In the list below, variables that are coded differently on your state-specific site are hyperlinked to a translation page. Click those links to see how those state-specific codes map onto the codes used on the Multistate site.

ADMISSION TYPE	Indicates whether the spell in question is the child's first spell in foster care or a subsequent return to foster care after a prior discharge.
1	Indicates that the spell is the child's first spell in foster care. When selecting children's first spells for analysis, choose the selection criterion labeled "First Admissions."
0	Indicates that the spell is a subsequent return to foster care after a discharge. When selecting children's subsequent spells for analysis, choose the selection criterion labeled "Re-entry."
AGE AT FIRST PLACEMENT	The child's age on the date of his/her first placement into foster care. For this variable and all variables pertaining to child age, age is truncated at the integer and decimals are not rounded. For example, a child who is 2.2 years old and a child who is 2.7 years old are both classified as 2 years old.
AGE AT SPELL END	The child's age at the end of the spell (i.e., exit from care) OR the child's age as of the censor date, as applicable.
AGE AT SPELL START	The child's age at the start of the spell (i.e., entry into care). For first spells, AGE AT SPELL START is the same as AGE AT FIRST PLACEMENT.
AGE GROUP (1)	The child's age at the start of the spell, as specified by the categories listed.
1	0 to 4 years old
2	5 to 17 years old
AGE GROUP (2)	The child's age at the start of the spell, as specified by the categories listed.
1	Under 1 year (infants)
2	1 to 5 years
3	6 to 12 years
4	13 to 17 years
AGE GROUP (3)	The child's age at the start of the spell, as specified by the categories listed.
1	Under 1 year (infants)
2	1 to 2 years
3	3 to 5 years
4	6 to 8 years
5	9 to 11 years
6	12 to 14 years
7	15 to 17 years
CHILD ID	The unique identification number assigned by the state to child.
COUNTY	The county of residence at the time of the child's first placement into foster care. This is the county from which the child was first removed. As such, COUNTY will be the same for all of a child's spells.
DURATION CATEGORY	Spell duration categories based on the time elapsed between spell start and spell end OR between spell start and the censor date, as applicable.
0	0 days

	1	1 to 29 days (under 1 month)
	2	30 to 89 days (1 to 2 months)
	3	90 to 179 days (3 to 5 months)
	4	180 to 364 days (6 to 11 months)
	5	365 to 544 days (12 to 17 months)
	6	545 to 1094 days (18 to 35 months)
	7	1095 days or more (36 months or more)
DURATION OF SPELL (days)	Duration of the spell, in days, as of exit from care OR as of the censor date, as applicable.	
DURATION OF SPELL (months)	Duration of the spell, in months, as of exit from care OR as of the censor date, as applicable.	
FIRST PLACEMENT TYPE	The first placement type of the child's spell.	
	PCC	Congregate Care
	PFC	Foster Care
	PKC	Kinship Foster Care
	POT	Other Placement Type
GENDER	The child's gender.	
	F	Female
	M	Male
LAST PLACEMENT TYPE	The last placement type of the child's spell OR the last placement type as of the censor date, as applicable.	
	PCC	Congregate Care
	PFC	Foster Care
	PKC	Kinship Foster Care
	POT	Other Placement Type
LEVEL OF URBANICITY	LEVEL OF URBANICITY is based on the COUNTY field, which refers to the child's county of residence at the time of his/her first placement into foster care (i.e., the county from which the child was removed). As such, LEVEL OF URBANICITY will be the same for all of a child's spells.	
	0	Balance of state - All other counties not classified as "Secondary urban counties" or "Primary urban county."
	1	Secondary urban counties - Counties that, according to the 2000 Census, had 75% or more of their 2000 population living in an urbanized area (Primary urban county excluded).
	2	Primary urban county - One county, identified by each state as the county with the largest child welfare system.
NUMBER OF PLACEMENTS	The number of placements the child had during the spell OR the number of placements the child had during the spell as of the censor date, as applicable.	
PLACEMENT TYPE CHANGE	Indicates whether, at any point during the spell, the child was in a placement type different from that of the first placement in that spell.	
	0	All placements during the child's spell were the same type as the first placement of the spell.
	1	At least one placement during the child's spell was of a different type than the first placement of the spell.
PREDOMINANT PLACEMENT TYPE	The type of placement setting in which the child spent more than 50 percent of his/her spell days.	
	CC	Congregate Care
	FC	Foster Care
	KC	Kinship Foster Care
	MX	Mixed Type (No one care type accounts for more than 50 percent of the child's spell days)
	OT	Other Placement Type
PROPORTION CONGREGATE CARE	The proportion of days the child spent in congregated care during the spell.	
PROPORTION FOSTER CARE	The proportion of days the child spent in non-kinship foster care during the spell.	

PROPORTION KINSHIP CARE The proportion of days the child spent in kinship foster care during the spell.

PROPORTION OTHER CARE TYPE The proportion of days the child spent in some "other" placement type during the spell.

RACE/ETHNICITY The child's racial/ethnic background.

AN	Native American
AS	Asian
BL	Black
HI	Hispanic
OT	Other
UK	Unknown/Missing
WH	White

RACE/ETHNICITY RECODE The child's racial/ethnic background, as specified by the listed categories.

BL	Black
HI	Hispanic
OT	Other - includes RACE/ETHNICITY categories of AN, AS, OT and UK
WH	White

RE-ENTRY AFTER CURRENT SPELL Indicates whether the child re-entered care following discharge from the spell in question.

NOTE: If a child exits care by running away, reaching the age of majority, or exiting to a destination classified as "other/unknown" (see codes XRY, XRM, and XOT below) and the child comes back into care within seven days of exit, the re-entry is bridged to form one spell, rather than identified as a new spell.

0	Indicates that the child is either still in care (i.e., the spell is censored) OR that the child was discharged and has not re-entered care as of the censor date.
1	Indicates that the child re-entered care after the spell.

SPELL EXIT TYPE The child's destination upon exiting from foster care.

XCA	Adoption
XOT	Other or Unknown exit destination
XRF	Reunification
XRL	Exit to relatives
XRM	Reach Majority
XRY	Run Away
ZTC	Spell is still open (i.e., censored)/child is still in care as of the last database update

SPELL NUMBER Every time a child enters foster care (i.e., begins a new spell), that spell is assigned a number that refers to a numeric sequence. The child's first spell is number 1; the child's second spell is number 2; and so on. Selecting spells based on SPELL NUMBER limits the analysis to a specific group of spells. For example, entering "Min: 1" and "Max: 2" in the SPELL NUMBER field returns results for a query based on all first and second spells.

TIME TO RE-ENTRY *For children who have exited care and re-entered care, TIME TO RE-ENTRY is the time (in days) from the date of the child's exit from care to the date the child re-entered care.*

For children who have exited but have not re-entered care, TIME TO RE-ENTRY is the time (in days) from the date of the child's exit to the censor date; thus, it reflects how long the child has been out of foster care without re-entering.

For children who are still in care as of the censor date, their spells are censored and TIME TO RE-ENTRY equals zero.

TIME TO RE-ENTRY CATEGORY Time from exit to re-entry OR time from exit to the censor date, as applicable, as specified by the categories listed.

0	0 days
1	1 to 29 days (under 1 month)
2	30 to 89 days (1 to 2 months)
3	90 to 179 days (3 to 5 months)
4	180 to 364 days (6 to 11 months)
5	365 to 544 days (12 to 17 months)

6	545 to 1094 days (18 to 35 months)
7	1095 days or more (36 months or more)

YEAR OF FIRST ENTRY The year of the child's first entry into foster care.

Copyright © 2001–2012. University of Chicago; Chapin Hall at the University of Chicago; Center for State Foster Care and Adoption Data. All rights reserved.

Annotated Examples—Length of Stay, Population Comparison

Length of Stay Report—Population Comparison

Current State: State A } Geographic area being analyzed:
Current County: County A } In a Population Comparison, the geographic area is the same for the base and comparison populations.

Summary of base population selection criteria (County A '07 entries, 0-1):
Spell Start Age >= 0
Spell Start Age <= 1
Spells Started between 01-01-2007 and 12-31-2007 } Description of the base population

Summary of comparison population selection criteria (County A '08 entries, 0-1):
Spell Start Age >= 0
Spell Start Age <= 1
Spells Started between 01-01-2008 and 12-31-2008 } Description of the comparison population

Total Spells (County A '07 entries, 0-1): 95
Total Spells (County A '08 entries, 0-1): 76 } Size of the base and comparison populations

Days Passed Before Percentage of Selected Spells Are Completed

	County A '07 entries, 0-1	County A '08 entries, 0-1
25%	20	17
50%	161	75
75%	588	340
100%	N/A	N/A

Quartiles: The amount of time by which a certain percent of children exited care.

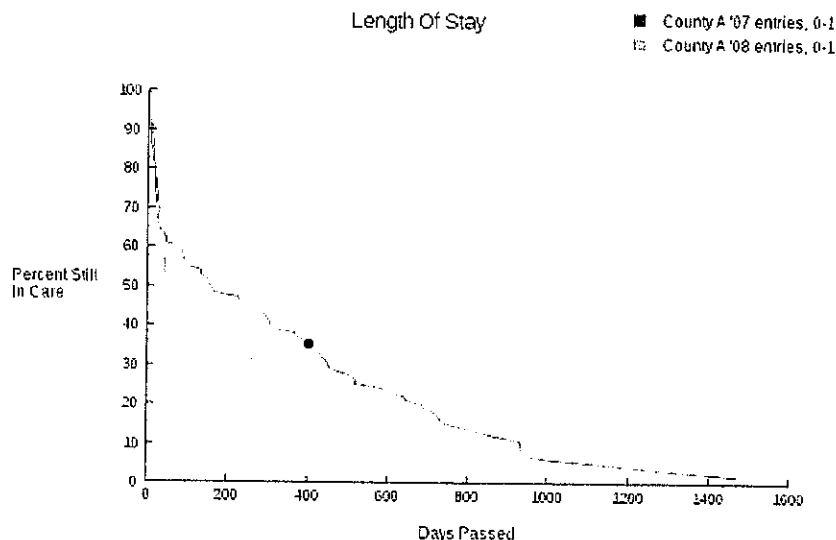
25%: By this many days, 25% of children exited care.

50%: By this many days, 50% of children exited care. **This is the median length of stay.**

75%: By this many days, 75% of children exited care.

100%: By this many days, all of the children exited care.

Length Of Stay



Graphical display of results:

This display is called a **survival curve**. The x-axis indicates the number of days in care. The y-axis indicates the percent of children still in care.

Therefore, a point on the line indicates the number of days by which a certain percentage of children in the population exited care. For example on this graph, the black dot shows that 65% of children in the base population had exited care by 400 days. Put differently, after 400 days, 35% of the children in the base population were still in care.

This example shows that children in the comparison population exited care faster than children in the base population, because the curve for the comparison population is stacked lower than the curve for the base population. For example, whereas 65% of children in the base population exited care by 400 days, 78% of children in the comparison population exited within that amount of time (gray dot).

Annotated Examples—Demographic Comparison, by Population

Demographic Comparison by Population

Current State: State A
Current County: County A } Geographic area being analyzed:
In a Population Comparison, the geographic area is the same for the base and comparison populations.

Summary of base population selection criteria (County A '07 entries, 0-1):
Spell Start Age >= 0
Spell Start Age <= 1
Spells Started between 01-01-2007 and 12-31-2007 } Description of the base population

Summary of comparison population selection criteria (County A '08 entries, 0-1):
Spell Start Age >= 0
Spell Start Age <= 1
Spells Started between 01-01-2008 and 12-31-2008 } Description of the comparison population

Report Options

Select Variables To Compare

Available variables:

- All
- Spell Start Age
- Gender
- Race/Ethnicity
- Type of Admission
- First Placement Type
- Predominant placement type
- Last Placement Type
- Exit Event
- Length of Stay

Display Report

Click **Graphic Display** to generate a graph of the output for each variable.

Variable	Count		Percent	
	County A '07 entries, 0-1	County A '08 entries, 0-1	County A '07 entries, 0-1	County A '08 entries, 0-1
Start Age				
Age Under 1	713	636	68%	69%
Age 1-2	341	289	32%	31%
Age 3-5	0	0	0%	0%
Age 6-8	0	0	0%	0%
Age 9-11	0	0	0%	0%
Age 12-14	0	0	0%	0%
Age 15-17	0	0	0%	0%
Total	1054	925	100%	100%
Gender				
Male	572	488	54%	53%

Tabular output

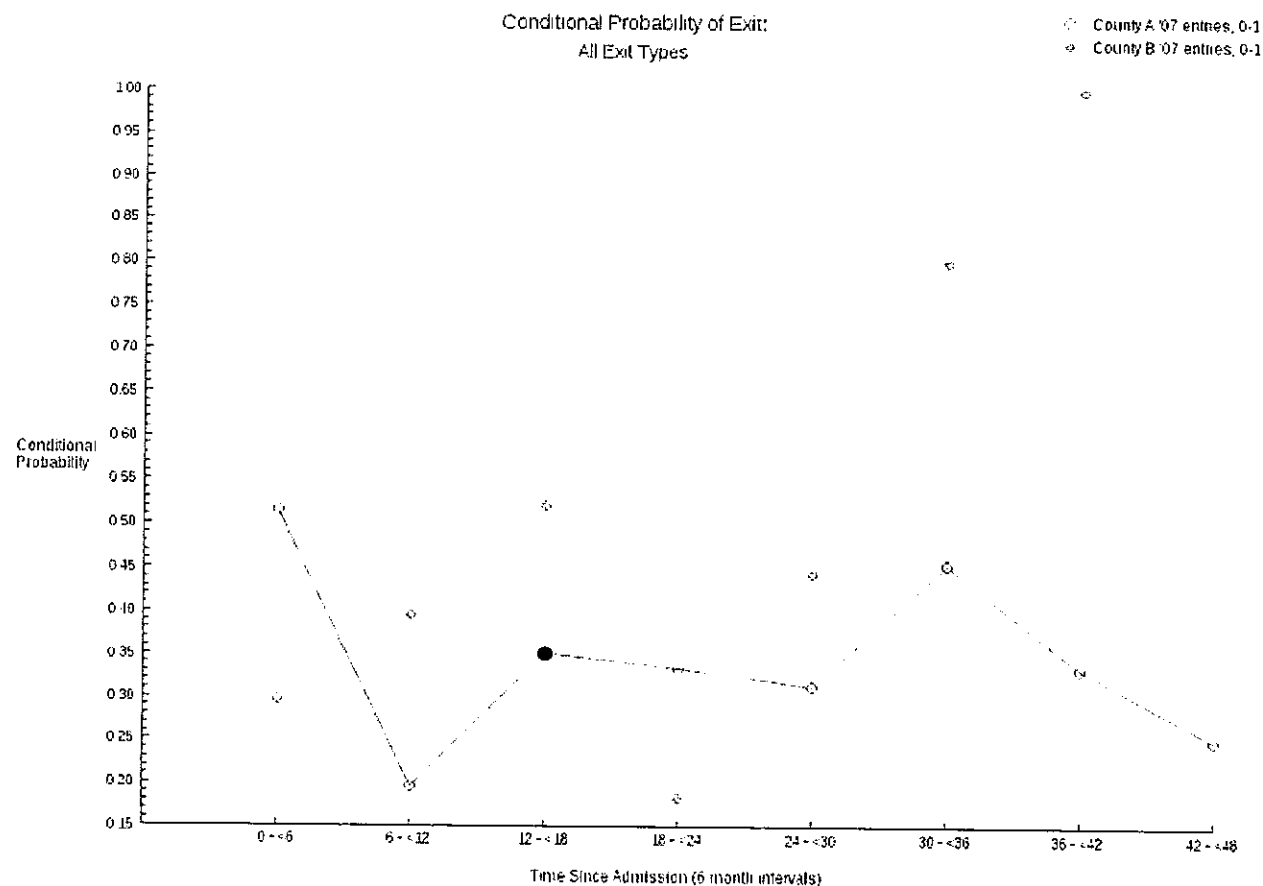
Annotated Examples—Likelihood of Exit, Geographic Comparison

Conditional Probability of All Exit Types-Geographic Comparison

Base population geographic area (County A '07 entries, 0-1); County A
Comparison population geographic area (County B '07 entries, 0-1); County B } Geographic areas being analyzed

Summary of selection criteria:
Spell Age: from 0 to 1
Entry Cohort: from 01-01-2007 to 12-31-2007 } Summary of selection criteria:
In a Geographic Comparison, selection criteria will be the same for the base and comparison populations.

Total Spells in the entry cohort (County A '07 entries, 0-1): 95
Total Spells in the entry cohort (County B '07 entries, 0-1): 54 } Size of the base and comparison populations



Graphical display of results:

This graph shows the **conditional probability** of exiting foster care. Conditional probability is the likelihood that a certain event will occur during a specific interval of time, given that it has not yet occurred.

Therefore, this graph shows the likelihood that a child will exit foster care in a particular six-month period, given that he/she did not exit previously. The x-axis indicates six-month intervals of time since entering foster care (i.e., 0 to <6 months, 6 to <12 months, etc.). The y-axis indicates the conditional probability of exit.

For example, on this graph, the black dot shows that if children in the base population did *not* exit foster care within one year of entering, they had a 35% chance of exiting after 12 to <18 months in care (i.e., during the next six-month interval).

Annotated Examples—List Records

Results

Your search produced 288 records.

Number of records that match the selected criteria

NOTE: The List Records function will retrieve a maximum of 500 records.

Click arrows to sort results in ascending/descending order.

Child ID ▲	State	County	Level of Urbanicity	Gender	Race/ethnicity	Date of Birth	Spell Start Date	First Placement Type	Number of Placements	Spell Exit Type	Proportion Congregate Care	
██████	██████	██████	0	F	WH	██████	01/25/2007	PFC	5	XRL	0%	▲
██████	██████	██████	0	M	WH	██████	05/24/2007	PFC	3	XRL	0%	≡
██████	██████	██████	0	F	WH	██████	08/14/2007	PKC	2	XCA	0%	
██████	██████	██████	0	F	WH	██████	07/09/2007	PFC	3	XCA	40%	
██████	██████	██████	0	M	WH	██████	07/23/2007	PKC	3	XRL	0%	
██████	██████	██████	0	M	WH	██████	07/23/2007	PKC	3	XRL	0%	
██████	██████	██████	0	M	WH	██████	12/20/2007	PCC	3	XRL	79%	
██████	██████	██████	0	M	WH	██████	10/02/2007	PFC	3	XRY	87%	
██████	██████	██████	0	F	WH	██████	09/20/2007	PCC	1	XRY	100%	
██████	██████	██████	0	F	WH	██████	11/26/2007	PFC	1	XRY	0%	
██████	██████	██████	0	M	WH	██████	05/22/2007	PFC	1	XCA	0%	
██████	██████	██████	0	M	BL	██████	11/15/2007	PKC	1	XRL	0%	
██████	██████	██████	0	F	WH	██████	08/25/2007	PCC	2	XRM	12%	
██████	██████	██████	0	F	WH	██████	05/30/2007	PFC	1	XRF	0%	
██████	██████	██████	0	F	WH	██████	03/09/2007	PFC	1	XRL	0%	
██████	██████	██████	0	F	WH	██████	06/19/2007	POT	3	XRM	60%	▼

Variables retrieved

ADMISSION TRENDS

Close this window

Table 1: Number and Percent of First Entries by Age

(NV, All Counties)

Entry Year	All First Entries	Number by Age at First Entry				All First Entries	Percent by Age at First Entry			
		Under 1	1-5	6-12	13-17		Under 1	1-5	6-12	13-17
2004	2,339	561	743	688	347	100%	24%	32%	29%	15%
2005	2,826	749	937	765	375	100%	27%	33%	27%	13%
2006	2,817	758	895	762	402	100%	27%	32%	27%	14%
2007	2,844	732	957	746	409	100%	26%	34%	26%	14%
2008	2,354	570	792	586	406	100%	24%	34%	25%	17%
2009	2,209	502	738	605	364	100%	23%	33%	27%	16%
2010	2,196	528	812	565	291	100%	24%	37%	26%	13%
2011	2,106	486	760	547	313	100%	23%	36%	26%	15%

(Most recent database update:12-31-2011)

Copyright © 2001–2011. Chapin Hall Center for Children. All rights reserved.

[Close this window](#)**Table 2: Entry Rate Per 1000 Children by Age**

(NV, All Counties)

Entry Year	All First Entries	Age at First Entry			
		Under 1	1-5	6-12	13-17
2004	4.57	19.31	5.08	3.35	2.65
2005	5.52	25.79	6.40	3.73	2.86
2006	4.43	21.45	5.04	3.04	2.34
2007	4.48	20.72	5.39	2.98	2.39
2008	3.71	16.13	4.46	2.34	2.37
2009	3.25	12.56	3.69	2.30	2.06
2010	3.23	13.21	4.06	2.15	1.65
2011	3.10	12.16	3.80	2.08	1.77

(Most recent database update:12-31-2011)

Copyright © 2001–2011. Chapin Hall Center for Children. All rights reserved.

Close this window

Table 3: Number and Percent of First Entries by Race/Ethnicity

(NV, All Counties)

Number by Race/Ethnicity								
Entry Year	All First Entries	White	African American	Hispanic	Asian Pacific Islander	Native American	Other	Unknown
2004	2,339	1,213	514	505	62	28	17	0
2005	2,826	1,316	694	687	73	38	18	0
2006	2,817	1,191	767	725	93	33	7	1
2007	2,844	1,147	763	823	70	38	3	0
2008	2,354	927	653	656	73	41	3	1
2009	2,209	830	608	649	79	39	4	0
2010	2,196	867	624	612	54	37	0	2
2011	2,106	904	584	525	56	32	3	2

Percent by Race/Ethnicity								
Entry Year	All First Entries	White	African American	Hispanic	Asian Pacific Islander	Native American	Other	Unknown
2004	100%	52%	22%	22%	3%	1%	1%	0%
2005	100%	47%	25%	24%	3%	1%	1%	0%
2006	100%	42%	27%	26%	3%	1%	0%	0%
2007	100%	40%	27%	29%	2%	1%	0%	0%
2008	100%	39%	28%	28%	3%	2%	0%	0%
2009	100%	38%	28%	29%	4%	2%	0%	0%
2010	100%	39%	28%	28%	2%	2%	0%	0%
2011	100%	43%	28%	25%	3%	2%	0%	0%

(Most recent database update:12-31-2011)

Copyright © 2001–2011, Chapin Hall Center for Children. All rights reserved.

[Close this window](#)**Table 4: Entry Rate Per Thousand Children by Race/Ethnicity**

(NV, All Counties)

Entry Year	All First Entries	Race/Ethnicity		
		White	African American	Hispanic
2004	4.57	4.39	10.65	3.45
2005	5.52	4.77	14.38	4.70
2006	4.43	3.87	14.90	3.47
2007	4.48	3.73	14.82	3.94
2008	3.71	3.01	12.69	3.14
2009	3.25	2.73	10.97	2.65
2010	3.23	2.85	11.26	2.50
2011	3.10	2.97	10.54	2.14

(Most recent database update:12-31-2011)

Copyright © 2001–2011. Chapin Hall Center for Children. All rights reserved.

[Close this window](#)**Table 5: Disparity Ratios in Entry Rates Per Thousand Children**

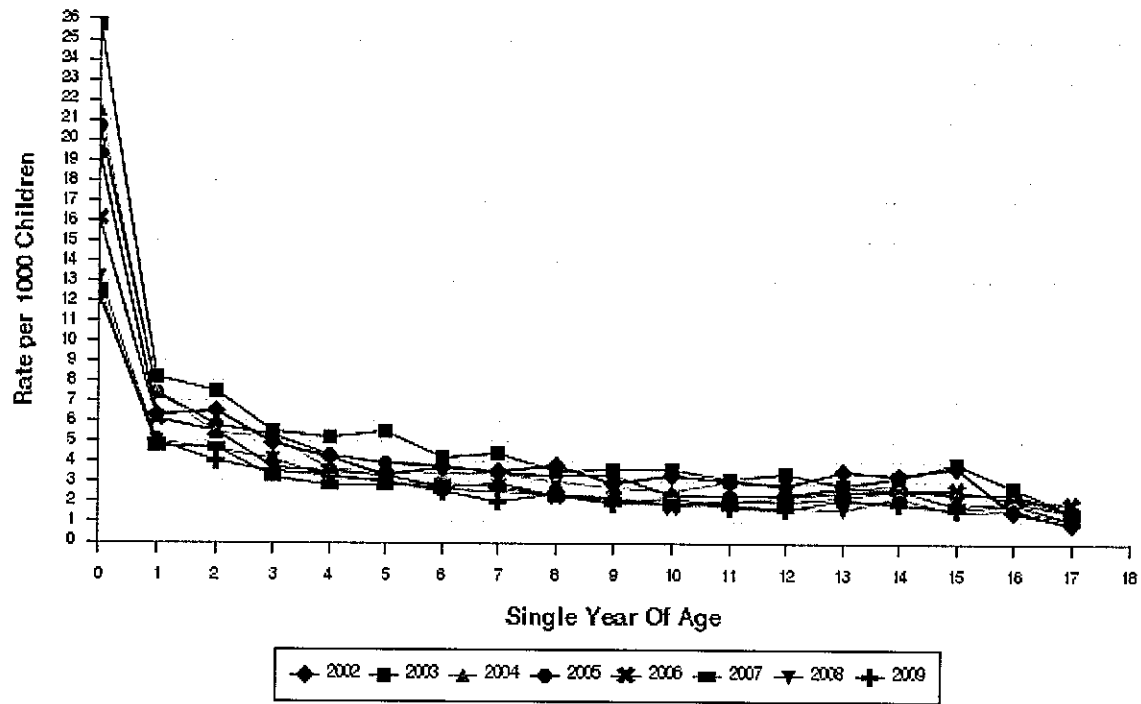
(NV, All Counties)

Entry Year	African American/ White	African American/ Hispanic	Hispanic/White
2004	2.42	3.08	.79
2005	3.02	3.06	.99
2006	3.85	4.29	.90
2007	3.98	3.76	1.06
2008	4.21	4.04	1.04
2009	4.02	4.14	.97
2010	3.95	4.51	.88
2011	3.55	4.92	.72

(Most recent database update:12-31-2011)

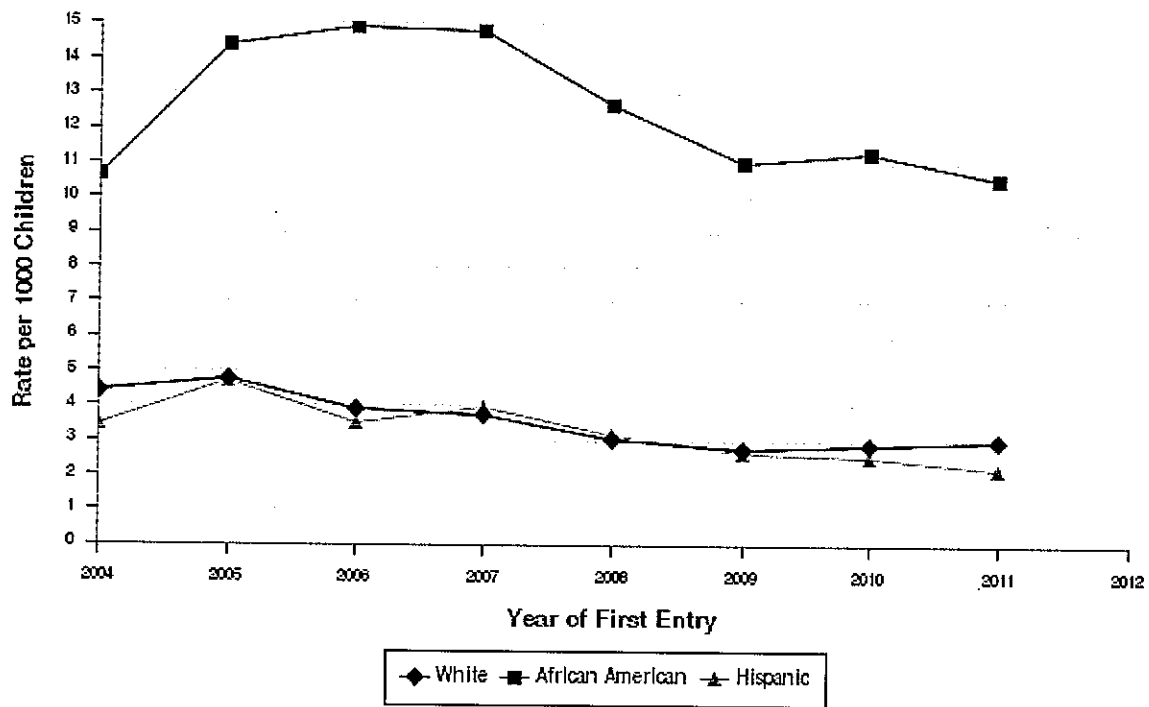
Copyright © 2001–2011, Chapin Hall Center for Children. All rights reserved.

Figure 1: Entry Rates Per Thousand, by Age and Year of First Entry to Foster Care
(NV, All Counties)



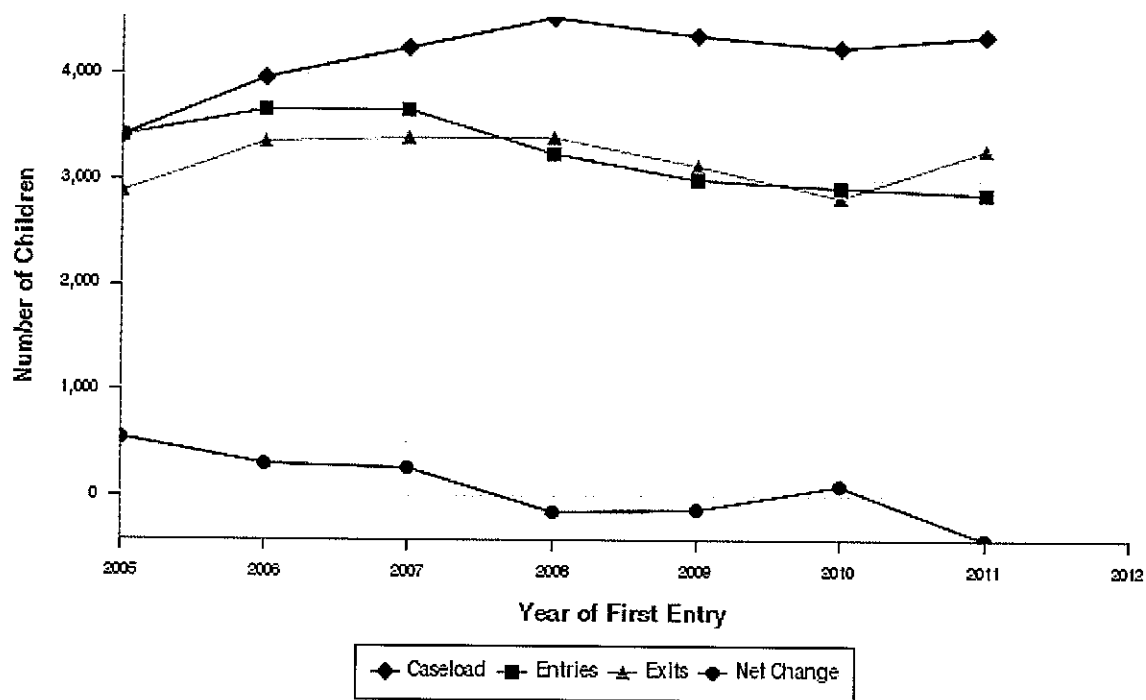
(Most recent database update: 12-31-2011)

Figure 2: Entry Rates Per Thousand, by Race/Ethnicity and Year of First Entry to Foster Care (NV, All Counties)



(Most recent database update: 12-31-2011)

Figure 5: Entries, Exits and Foster Care Caseload
(NV, All Counties)



(Most recent database update: 12-31-2011)

PERMANENCY

Close this window

Table 10: Quartile Duration of First Entries in Months, All First Entries and by Age

(NV, All Counties)

All First Entries			
Entry Year	25th Percentile	50th Percentile	75th Percentile
2004	0.49	7.97	23.31
2005	0.75	6.23	19.87
2006	1.18	7.84	21.97
2007	0.95	7.02	20.98
2008	0.89	6.00	22.23
2009	1.08	7.15	21.44
2010	2.23	9.51	0.00
Children Under 1 At Entry			
Entry Year	25th Percentile	50th Percentile	75th Percentile
2004	0.49	10.33	22.49
2005	1.25	10.33	22.52
2006	1.61	10.92	24.85
2007	1.70	10.72	25.15
2008	2.07	11.48	27.02
2009	3.51	15.18	26.85
2010	5.34	15.87	0.00
Children Ages 1-5 At Entry			
Entry Year	25th Percentile	50th Percentile	75th Percentile
2004	0.72	8.72	25.41
2005	0.95	6.36	19.31
2006	0.95	6.89	20.39
2007	1.11	7.28	20.10
2008	0.92	6.49	23.64
2009	1.15	5.93	20.00
2010	2.03	9.57	0.00
Children Ages 6-12 At Entry			
Entry Year	25th Percentile	50th Percentile	75th Percentile
2004	0.39	6.62	23.41
2005	0.62	5.08	18.36
2006	1.15	6.79	19.44
2007	0.59	5.38	18.75
2008	0.66	3.74	15.28
2009	0.69	5.64	21.18
2010	2.16	7.51	0.00
Children Ages 13-17 At Entry			

Entry Year	25th Percentile	50th Percentile	75th Percentile
2004	0.46	4.89	21.38
2005	0.43	2.59	14.56
2006	1.15	5.93	19.87
2007	0.52	2.69	15.28
2008	0.49	2.82	12.82
2009	0.89	5.61	13.64
2010	1.11	5.41	0.00

(Most recent database update:12-31-2011)

Copyright © 2001–2011. Chapin Hall Center for Children. All rights reserved.

Close this window

Table 11: Number and Percents of First Entrants by Entry Year and Exit Destination from First Spell

(NV, All Counties)

Entry Year	All First Entries	Total Discharged as of 12-31-2011	Number to Each Outcome						Still in First Spell as of 12-31-2011
			Reunify	Adoption	Relatives	Reach Majority	Runaway	Other	
2004	2,339	2,268	1,245	411	292	70	71	179	71
2005	2,826	2,714	1,686	429	335	53	55	156	112
2006	2,817	2,707	1,604	434	390	69	81	129	110
2007	2,844	2,755	1,804	458	259	58	64	112	89
2008	2,354	2,229	1,543	397	121	39	52	77	125
2009	2,209	1,915	1,410	257	92	30	43	83	294
2010	2,196	1,523	1,219	90	77	12	29	96	673
2011	2,106	782	679	9	31	1	23	39	1,324
Percent (of All Entries) to Each Outcome									
2004	100%	97%	53%	18%	12%	3%	3%	8%	3%
2005	100%	96%	60%	15%	12%	2%	2%	6%	4%
2006	100%	96%	57%	15%	14%	2%	3%	5%	4%
2007	100%	97%	63%	16%	9%	2%	2%	4%	3%
2008	100%	95%	66%	17%	5%	2%	2%	3%	5%
2009	100%	87%	64%	12%	4%	1%	2%	4%	13%
2010	100%	69%	56%	4%	4%	1%	1%	4%	31%
2011	100%	37%	32%	0%	1%	0%	1%	2%	63%

(Note: Placement years should only be compared when the Percent Discharged is comparable.)
 (Most recent database update:12-31-2011)

Copyright © 2001–2011. Chapin Hall Center for Children. All rights reserved.

Close this window

**Table 12: Cumulative Number and Percent Discharged to Permanent Exits,
All Placement Ages**

(NV, All Counties)

Cumulative Number Discharged to Reunification, All Entry Ages								Cumulative Percent Discharged to Reunification, All Entry Ages					
Entry Year	Number 1st Entries	Within 6 Months	Within 1 Year	Within 2 Years	Within 3 Years	Within 4 Years	Within 5 Years	Within 6 Months	Within 1 Year	Within 2 Years	Within 3 Years	Within 4 Years	Within 5 Years
2004	2,339	774	980	1,182	1,221	1,235	1,239	33%	42%	51%	52%	53%	53%
2005	2,826	1,124	1,370	1,610	1,659	1,672	1,681	40%	48%	57%	59%	59%	59%
2006	2,817	990	1,258	1,513	1,584	1,601	1,604	35%	45%	54%	56%	57%	57%
2007	2,844	1,115	1,432	1,726	1,788	1,795	1,804	39%	50%	61%	63%	63%	63%
2008	2,354	1,007	1,275	1,495	1,534	1,543	--	43%	54%	64%	65%	66%	--
2009	2,209	892	1,157	1,376	1,410	--	--	40%	52%	62%	64%	--	--
2010	2,196	704	1,051	1,219	--	--	--	32%	48%	56%	--	--	--
2011	2,106	610	679	--	--	--	--	29%	32%	--	--	--	--
Cumulative Number Discharged to Relative, All Entry Ages								Cumulative Percent Discharged to Relative, All Entry Ages					
2004	2,339	135	175	265	290	291	292	6%	7%	11%	12%	12%	12%
2005	2,826	120	182	308	330	334	334	4%	6%	11%	12%	12%	12%
2006	2,817	127	226	363	386	389	390	5%	8%	13%	14%	14%	14%
2007	2,844	100	172	244	255	258	259	4%	6%	9%	9%	9%	9%
2008	2,354	66	85	96	119	121	--	3%	4%	4%	5%	5%	--
2009	2,209	54	61	89	92	--	--	2%	3%	4%	4%	--	--
2010	2,196	41	65	77	--	--	--	2%	3%	4%	--	--	--
2011	2,106	25	31	--	--	--	--	1%	1%	--	--	--	--
Cumulative Number Discharged to Adoption, All Entry Ages								Cumulative Percent Discharged to Adoption, All Entry Ages					
2004	2,339	14	25	112	225	300	361	1%	1%	5%	10%	13%	15%
2005	2,826	5	15	130	243	337	391	0%	1%	5%	9%	12%	14%
2006	2,817	4	14	83	232	351	410	0%	0%	3%	8%	12%	15%
2007	2,844	1	5	87	262	419	458	0%	0%	3%	9%	15%	16%
2008	2,354	1	6	75	311	397	--	0%	0%	3%	13%	17%	--
2009	2,209	0	9	115	257	--	--	0%	0%	5%	12%	--	--
2010	2,196	0	8	90	--	--	--	0%	0%	4%	--	--	--
2011	2,106	1	9	--	--	--	--	0%	0%	--	--	--	--
Cumulative Number Discharged to Other Exits, All Entry Ages								Cumulative Percent Discharged to Other Exits, All Entry Ages					
2004	2,339	150	182	212	244	263	286	6%	8%	9%	10%	11%	12%
2005	2,826	145	171	206	227	245	254	5%	6%	7%	8%	9%	9%
2006	2,817	145	179	210	235	254	273	5%	6%	7%	8%	9%	10%
2007	2,844	127	145	176	205	227	234	4%	5%	6%	7%	8%	8%
2008	2,354	103	124	145	164	168	--	4%	5%	6%	7%	7%	--
2009	2,209	91	119	150	156	--	--	4%	5%	7%	7%	--	--
2010	2,196	107	126	137	--	--	--	5%	6%	6%	--	--	--
2011	2,106	61	63	--	--	--	--	3%	3%	--	--	--	--

(Note: The Detailed Exit Profile contains information on all age groups and exit types. Shaded cells indicate where some but not all possible discharges have been observed for that interval.)
(Most recent database update: 12-31-2011)

Close this window

Table 20: First Entrants, Number and Percent by Exit Type, All Entry Ages

(NV, All Counties)

Entry Year	Number 1st Placements	Cumulative Number Discharged to Reunification, All Entry Ages						Cumulative Percent Discharged to Reunification, All Entry Ages					
		Within 6 Months	Within 1 Year	Within 2 Years	Within 3 Years	Within 4 Years	Within 5 Years	Within 6 Months	Within 1 Year	Within 2 Years	Within 3 Years	Within 4 Years	Within 5 Years
2004	2,339	774	980	1,182	1,221	1,235	1,239	33%	42%	51%	52%	53%	53%
2005	2,826	1,124	1,370	1,610	1,659	1,672	1,681	40%	48%	57%	59%	59%	59%
2006	2,817	990	1,258	1,513	1,584	1,601	1,604	35%	45%	54%	56%	57%	57%
2007	2,844	1,115	1,432	1,726	1,788	1,795	1,804	39%	50%	61%	63%	63%	63%
2008	2,354	1,007	1,275	1,495	1,534	1,543	—	43%	54%	64%	65%	66%	—
2009	2,209	892	1,157	1,376	1,410	—	—	40%	52%	62%	64%	—	—
2010	2,196	704	1,051	1,219	—	—	—	32%	48%	56%	—	—	—
2011	2,106	610	679	—	—	—	—	29%	32%	—	—	—	—

Entry Year	Number 1st Placements	Cumulative Number Discharged to Relative, All Entry Ages						Cumulative Percent Discharged to Relative, All Entry Ages					
		Within 6 Months	Within 1 Year	Within 2 Years	Within 3 Years	Within 4 Years	Within 5 Years	Within 6 Months	Within 1 Year	Within 2 Years	Within 3 Years	Within 4 Years	Within 5 Years
2004	2,339	135	175	265	290	291	292	6%	7%	11%	12%	12%	12%
2005	2,826	120	182	308	330	334	334	4%	6%	11%	12%	12%	12%
2006	2,817	127	226	363	386	389	390	5%	8%	13%	14%	14%	14%
2007	2,844	100	172	244	255	258	259	4%	6%	9%	9%	9%	9%
2008	2,354	66	85	96	119	121	—	3%	4%	4%	5%	5%	—
2009	2,209	54	61	89	92	—	—	2%	3%	4%	4%	—	—
2010	2,196	41	65	77	—	—	—	2%	3%	4%	—	—	—
2011	2,106	25	31	—	—	—	—	1%	1%	—	—	—	—

Entry Year	Number 1st Placements	Cumulative Number Discharged to Adoption, All Entry Ages						Cumulative Percent Discharged to Adoption, All Entry Ages					
		Within 6 Months	Within 1 Year	Within 2 Years	Within 3 Years	Within 4 Years	Within 5 Years	Within 6 Months	Within 1 Year	Within 2 Years	Within 3 Years	Within 4 Years	Within 5 Years
2004	2,339	14	25	112	225	300	361	1%	1%	5%	10%	13%	15%
2005	2,826	5	15	130	243	337	391	0%	1%	5%	9%	12%	14%
2006	2,817	4	14	83	232	351	410	0%	0%	3%	8%	12%	15%
2007	2,844	1	5	87	262	419	458	0%	0%	3%	9%	15%	16%
2008	2,354	1	6	75	311	397	—	0%	0%	3%	13%	17%	—
2009	2,209	0	9	115	257	—	—	0%	0%	5%	12%	—	—
2010	2,196	0	8	90	—	—	—	0%	0%	4%	—	—	—
2011	2,106	1	9	—	—	—	—	0%	0%	—	—	—	—

Entry Year	Number 1st Placements	Cumulative Number who Ran Away, All Entry Ages						Cumulative Percent who Ran Away, All Entry Ages					
		Within 6 Months	Within 1 Year	Within 2 Years	Within 3 Years	Within 4 Years	Within 5 Years	Within 6 Months	Within 1 Year	Within 2 Years	Within 3 Years	Within 4 Years	Within 5 Years
2004	2,339	27	37	46	58	64	68	1%	2%	2%	2%	3%	3%
2005	2,826	26	31	44	48	53	54	1%	1%	2%	2%	2%	2%
2006	2,817	38	53	66	74	77	81	1%	2%	2%	3%	3%	3%
2007	2,844	37	47	57	63	64	64	1%	2%	2%	2%	2%	2%
2008	2,354	41	45	49	51	52	—	2%	2%	2%	2%	2%	—
2009	2,209	27	34	42	43	—	—	1%	2%	2%	2%	—	—
2010	2,196	24	27	29	—	—	—	1%	1%	1%	—	—	—
2011	2,106	23	23	—	—	—	—	1%	1%	—	—	—	—

Entry Year	Number 1st Placements	Cumulative Number who Aged Out, All Entry Ages						Cumulative Percent who Aged Out, All Entry Ages					
		Within 6 Months	Within 1 Year	Within 2 Years	Within 3 Years	Within 4 Years	Within 5 Years	Within 6 Months	Within 1 Year	Within 2 Years	Within 3 Years	Within 4 Years	Within 5 Years
2004	2,339	0	1	5	15	25	41	0%	0%	0%	1%	1%	2%
2005	2,826	2	11	17	27	37	45	0%	0%	1%	1%	1%	2%

2006	2,817	2	9	24	37	51	63	0%	0%	1%	1%	2%	2%
2007	2,844	5	9	22	40	56	58	0%	0%	1%	1%	2%	2%
2008	2,354	5	10	25	36	39	—	0%	0%	1%	2%	2%	—
2009	2,209	6	15	26	30	--	--	0%	1%	1%	1%	—	—
2010	2,196	1	7	12	—	—	--	0%	0%	1%	--	—	--
2011	2,106	1	1	--	—	—	--	0%	0%	--	—	—	--

Cumulative Number who Exited to Other, All Entry Ages								Cumulative Percent who Exited to Other, All Entry Ages					
2004	2,339	123	144	161	171	174	177	5%	6%	7%	7%	7%	8%
2005	2,826	117	129	145	152	155	155	4%	5%	5%	5%	5%	5%
2006	2,817	105	117	120	124	126	129	4%	4%	4%	4%	4%	5%
2007	2,844	85	89	97	102	107	112	3%	3%	3%	4%	4%	4%
2008	2,354	57	69	71	77	77	—	2%	3%	3%	3%	3%	—
2009	2,209	58	70	82	83	—	—	3%	3%	4%	4%	—	—
2010	2,196	82	92	96	—	--	--	4%	4%	4%	--	—	—
2011	2,106	37	39	--	—	—	--	2%	2%	—	--	—	--

Number Still In Care, All Entry Ages								Percent Still In Care, All Entry Ages					
2004	2,339	1,266	977	568	359	250	161	54%	42%	24%	15%	11%	7%
2005	2,826	1,432	1,088	572	367	238	166	51%	38%	20%	13%	8%	6%
2006	2,817	1,551	1,140	648	380	222	140	55%	40%	23%	13%	8%	5%
2007	2,844	1,501	1,090	611	334	145	89	53%	38%	21%	12%	5%	3%
2008	2,354	1,177	864	543	226	125	—	50%	37%	23%	10%	5%	—
2009	2,209	1,172	863	479	294	--	—	53%	39%	22%	13%	--	—
2010	2,196	1,344	946	673	--	—	--	61%	43%	31%	--	—	--
2011	2,106	1,409	1,324	—	--	—	—	67%	63%	—	--	—	--

(Note: Shaded cells indicate where some but not all possible discharges have been observed for that interval.)
(Most recent database update:12-31-2011)

Close this window

Table 21: First Entrants, Number and Percent by Exit Type, Children Under 1

(NV, All Counties)

Cumulative Number Discharged to Reunification, Children Under 1								Cumulative Percent Discharged to Reunification, Children Under 1						
Entry Year	Number 1st Placements	Within 6 Months	Within 1 Year	Within 2 Years	Within 3 Years	Within 4 Years	Within 5 Years	Within 6 Months	Within 1 Year	Within 2 Years	Within 3 Years	Within 4 Years	Within 5 Years	
2004	561	154	194	244	252	253	254	27%	35%	43%	45%	45%	45%	
2005	749	223	285	343	353	355	355	30%	38%	46%	47%	47%	47%	
2006	758	212	288	348	357	360	360	28%	38%	46%	47%	47%	47%	
2007	732	238	317	381	399	399	399	33%	43%	52%	55%	55%	55%	
2008	570	175	243	297	306	307	—	31%	43%	52%	54%	54%	--	
2009	502	144	190	242	252	--	--	29%	38%	48%	50%	--	--	
2010	528	122	192	228	—	—	--	23%	36%	43%	—	--	—	
2011	486	97	111	--	—	—	--	20%	23%	—	--	—	--	
Cumulative Number Discharged to Relative, Children Under 1								Cumulative Percent Discharged to Relative, Children Under 1						
2004	561	33	46	62	65	65	65	6%	8%	11%	12%	12%	12%	
2005	749	32	59	86	91	91	91	4%	8%	11%	12%	12%	12%	
2006	758	33	60	94	100	100	100	4%	8%	12%	13%	13%	13%	
2007	732	20	45	62	64	64	64	3%	6%	8%	9%	9%	9%	
2008	570	10	14	15	16	16	—	2%	2%	3%	3%	3%	—	
2009	502	2	2	5	7	--	—	0%	0%	1%	1%	—	--	
2010	528	6	8	10	—	--	—	1%	2%	2%	--	—	--	
2011	486	3	4	—	—	—	--	1%	1%	—	--	—	--	
Cumulative Number Discharged to Adoption, Children Under 1								Cumulative Percent Discharged to Adoption, Children Under 1						
2004	561	14	24	89	139	160	177	2%	4%	16%	25%	29%	32%	
2005	749	5	15	105	159	203	227	1%	2%	14%	21%	27%	30%	
2006	758	4	14	79	161	219	234	1%	2%	10%	21%	29%	31%	
2007	732	1	2	71	171	228	233	0%	0%	10%	23%	31%	32%	
2008	570	1	6	61	171	197	--	0%	1%	11%	30%	35%	--	
2009	502	0	9	84	156	--	—	0%	2%	17%	31%	--	—	
2010	528	0	8	77	—	—	--	0%	2%	15%	--	—	—	
2011	486	1	9	--	—	—	—	0%	2%	—	--	--	—	
Cumulative Number who Ran Away, Children Under 1								Cumulative Percent who Ran Away, Children Under 1						
2004	561	0	0	0	0	0	0	0%	0%	0%	0%	0%	0%	
2005	749	0	0	0	0	0	0	0%	0%	0%	0%	0%	0%	
2006	758	0	0	0	0	0	0	0%	0%	0%	0%	0%	0%	
2007	732	0	0	0	0	0	0	0%	0%	0%	0%	0%	0%	
2008	570	0	0	0	0	0	—	0%	0%	0%	0%	0%	—	
2009	502	0	0	0	0	--	—	0%	0%	0%	0%	--	—	
2010	528	0	0	0	—	--	—	0%	0%	0%	—	--	—	
2011	486	0	0	--	—	--	--	0%	0%	—	--	--	—	
Cumulative Number who Aged Out, Children Under 1								Cumulative Percent who Aged Out, Children Under 1						
2004	561	0	0	0	0	0	0	0%	0%	0%	0%	0%	0%	
2005	749	0	0	0	0	0	0	0%	0%	0%	0%	0%	0%	
2006	758	0	0	0	0	0	0	0%	0%	0%	0%	0%	0%	

2007	732	0	0	0	0	0	0	0%	0%	0%	0%	0%	0%
2008	570	0	0	0	0	0	--	0%	0%	0%	0%	0%	--
2009	502	0	0	0	0	--	--	0%	0%	0%	0%	--	--
2010	528	0	0	0	--	--	--	0%	0%	0%	--	--	--
2011	486	0	0	--	--	--	--	0%	0%	--	--	--	--

Cumulative Number who Exited to Other, Children Under 1								Cumulative Percent who Exited to Other, Children Under 1					
2004	561	32	36	44	48	48	48	6%	6%	8%	9%	9%	9%
2005	749	39	42	47	47	47	47	5%	6%	6%	6%	6%	6%
2006	758	38	40	42	43	44	44	5%	5%	6%	6%	6%	6%
2007	732	24	25	26	27	28	28	3%	3%	4%	4%	4%	4%
2008	570	22	25	27	27	27	--	4%	4%	5%	5%	5%	--
2009	502	15	17	17	17	--	--	3%	3%	3%	3%	--	--
2010	528	14	15	15	--	--	--	3%	3%	3%	--	--	--
2011	486	4	5	--	--	--	--	1%	1%	--	--	--	--

Number Still In Care, Children Under 1								Percent Still In Care, Children Under 1					
2004	561	328	261	122	57	35	17	58%	47%	22%	10%	6%	3%
2005	749	450	348	168	99	53	29	60%	46%	22%	13%	7%	4%
2006	758	471	356	195	97	35	20	62%	47%	26%	13%	5%	3%
2007	732	449	343	192	71	13	8	61%	47%	26%	10%	2%	1%
2008	570	362	282	170	50	23	--	64%	49%	30%	9%	4%	--
2009	502	341	284	154	70	--	--	68%	57%	31%	14%	--	--
2010	528	386	305	198	--	--	--	73%	58%	38%	--	--	--
2011	486	381	357	--	--	--	--	78%	73%	--	--	--	--

(Note: Shaded cells indicate where some but not all possible discharges have been observed for that interval.)
(Most recent database update:12-31-2011)

Close this window

Table 22: First Entrants, Number and Percent by Exit Type, Children 1 to 5

(NV, All Counties)

Entry Year	Number 1st Placements	Cumulative Number Discharged to Reunification, Children 1 to 5						Cumulative Percent Discharged to Reunification, Children 1 to 5					
		Within 6 Months	Within 1 Year	Within 2 Years	Within 3 Years	Within 4 Years	Within 5 Years	Within 6 Months	Within 1 Year	Within 2 Years	Within 3 Years	Within 4 Years	Within 5 Years
2004	743	247	327	395	408	414	414	33%	44%	53%	55%	56%	56%
2005	937	374	478	574	595	598	602	40%	51%	61%	64%	64%	64%
2006	895	353	461	551	579	588	588	39%	52%	62%	65%	66%	66%
2007	957	385	522	645	665	666	671	40%	55%	67%	69%	70%	70%
2008	792	350	446	539	552	557	--	44%	56%	68%	70%	70%	--
2009	738	328	435	513	529	--	--	44%	59%	70%	72%	--	--
2010	812	268	417	500	--	--	--	33%	51%	62%	--	--	--
2011	760	217	241	--	--	--	--	29%	32%	--	--	--	--

Entry Year	Number 1st Placements	Cumulative Number Discharged to Relative, Children 1 to 5						Cumulative Percent Discharged to Relative, Children 1 to 5					
		Within 6 Months	Within 1 Year	Within 2 Years	Within 3 Years	Within 4 Years	Within 5 Years	Within 6 Months	Within 1 Year	Within 2 Years	Within 3 Years	Within 4 Years	Within 5 Years
2004	743	45	54	92	104	104	105	6%	7%	12%	14%	14%	14%
2005	937	50	64	121	126	126	126	5%	7%	13%	13%	13%	13%
2006	895	37	61	106	116	116	116	4%	7%	12%	13%	13%	13%
2007	957	30	55	78	80	81	81	3%	6%	8%	8%	8%	8%
2008	792	17	22	23	27	27	--	2%	3%	3%	3%	3%	--
2009	738	20	21	32	33	--	--	3%	3%	4%	4%	--	--
2010	812	16	24	30	--	--	--	2%	3%	4%	--	--	--
2011	760	12	13	--	--	--	--	2%	2%	--	--	--	--

Entry Year	Number 1st Placements	Cumulative Number Discharged to Adoption, Children 1 to 5						Cumulative Percent Discharged to Adoption, Children 1 to 5					
		Within 6 Months	Within 1 Year	Within 2 Years	Within 3 Years	Within 4 Years	Within 5 Years	Within 6 Months	Within 1 Year	Within 2 Years	Within 3 Years	Within 4 Years	Within 5 Years
2004	743	0	1	14	51	81	110	0%	0%	2%	7%	11%	15%
2005	937	0	0	20	61	93	111	0%	0%	2%	7%	10%	12%
2006	895	0	0	2	49	88	114	0%	0%	0%	5%	10%	13%
2007	957	0	0	10	61	131	146	0%	0%	1%	6%	14%	15%
2008	792	0	0	10	97	141	--	0%	0%	1%	12%	18%	--
2009	738	0	0	20	67	--	--	0%	0%	3%	9%	--	--
2010	812	0	0	11	--	--	--	0%	0%	1%	--	--	--
2011	760	0	0	--	--	--	--	0%	0%	--	--	--	--

Entry Year	Number 1st Placements	Cumulative Number who Ran Away, Children 1 to 5						Cumulative Percent who Ran Away, Children 1 to 5					
		Within 6 Months	Within 1 Year	Within 2 Years	Within 3 Years	Within 4 Years	Within 5 Years	Within 6 Months	Within 1 Year	Within 2 Years	Within 3 Years	Within 4 Years	Within 5 Years
2004	743	0	0	0	0	0	0	0%	0%	0%	0%	0%	0%
2005	937	0	0	0	0	0	0	0%	0%	0%	0%	0%	0%
2006	895	0	0	0	0	0	0	0%	0%	0%	0%	0%	0%
2007	957	0	0	0	0	0	0	0%	0%	0%	0%	0%	0%
2008	792	0	0	0	0	0	--	0%	0%	0%	0%	0%	--
2009	738	0	0	0	0	--	--	0%	0%	0%	0%	--	--
2010	812	0	0	0	--	--	--	0%	0%	0%	--	--	--
2011	760	0	0	--	--	--	--	0%	0%	--	--	--	--

Entry Year	Number 1st Placements	Cumulative Number who Aged Out, Children 1 to 5						Cumulative Percent who Aged Out, Children 1 to 5					
		Within 6 Months	Within 1 Year	Within 2 Years	Within 3 Years	Within 4 Years	Within 5 Years	Within 6 Months	Within 1 Year	Within 2 Years	Within 3 Years	Within 4 Years	Within 5 Years
2004	743	0	0	0	0	0	0	0%	0%	0%	0%	0%	0%
2005	937	0	0	0	0	0	0	0%	0%	0%	0%	0%	0%
2006	895	0	0	0	0	0	0	0%	0%	0%	0%	0%	0%

2007	957	0	0	0	0	0	0	0%	0%	0%	0%	0%	0%
2008	792	0	0	0	0	0	--	0%	0%	0%	0%	0%	--
2009	738	0	0	0	0	--	--	0%	0%	0%	0%	--	--
2010	812	0	0	0	--	--	--	0%	0%	0%	--	--	--
2011	760	0	0	--	--	--	--	0%	0%	--	--	--	--

		Cumulative Number who Exited to Other, Children 1 to 5						Cumulative Percent who Exited to Other, Children 1 to 5					
2004	743	38	43	47	49	50	50	5%	6%	6%	7%	7%	7%
2005	937	32	35	38	38	39	39	3%	4%	4%	4%	4%	4%
2006	895	29	32	32	32	32	32	3%	4%	4%	4%	4%	4%
2007	957	26	28	31	32	33	34	3%	3%	3%	3%	3%	4%
2008	792	16	23	23	23	23	--	2%	3%	3%	3%	3%	--
2009	738	21	24	25	25	--	--	3%	3%	3%	3%	--	--
2010	812	24	27	27	--	--	--	3%	3%	3%	--	--	--
2011	760	14	14	--	--	--	--	2%	2%	--	--	--	--

		Number Still In Care, Children 1 to 5						Percent Still In Care, Children 1 to 5					
2004	743	413	318	195	131	94	64	56%	43%	26%	18%	13%	9%
2005	937	481	360	184	117	81	59	51%	38%	20%	12%	9%	6%
2006	895	476	341	204	119	71	45	53%	38%	23%	13%	8%	5%
2007	957	516	352	193	119	46	25	54%	37%	20%	12%	5%	3%
2008	792	409	301	197	93	44	--	52%	38%	25%	12%	6%	--
2009	738	369	258	148	84	--	--	50%	35%	20%	11%	--	--
2010	812	504	344	244	--	--	--	62%	42%	30%	--	--	--
2011	760	517	492	--	--	--	--	68%	65%	--	--	--	--

(Note: Shaded cells indicate where some but not all possible discharges have been observed for that interval.)
(Most recent database update:12-31-2011)

Copyright © 2001–2011. Chapin Hall Center for Children. All rights reserved.

Close this window

Table 23: First Entrants, Number and Percent by Exit Type, Children 6 to 12

(NV, All Counties)

Entry Year	Number 1st Placements	Cumulative Number Discharged to Reunification, Children 6 to 12						Cumulative Percent Discharged to Reunification, Children 6 to 12					
		Within 6 Months	Within 1 Year	Within 2 Years	Within 3 Years	Within 4 Years	Within 5 Years	Within 6 Months	Within 1 Year	Within 2 Years	Within 3 Years	Within 4 Years	Within 5 Years
2004	688	261	324	387	404	410	412	38%	47%	56%	59%	60%	60%
2005	765	361	423	489	505	512	517	47%	55%	64%	66%	67%	68%
2006	762	297	366	445	471	475	477	39%	48%	58%	62%	62%	63%
2007	746	322	400	479	502	507	511	43%	54%	64%	67%	68%	68%
2008	586	307	375	425	440	443	—	52%	64%	73%	75%	76%	—
2009	605	281	348	415	423	—	—	46%	58%	69%	70%	—	—
2010	565	214	318	361	—	—	—	38%	56%	64%	—	—	—
2011	547	190	214	—	—	—	—	35%	39%	—	—	—	—

Entry Year	Number 1st Placements	Cumulative Number Discharged to Relative, Children 6 to 12						Cumulative Percent Discharged to Relative, Children 6 to 12					
		Within 6 Months	Within 1 Year	Within 2 Years	Within 3 Years	Within 4 Years	Within 5 Years	Within 6 Months	Within 1 Year	Within 2 Years	Within 3 Years	Within 4 Years	Within 5 Years
2004	688	39	54	81	90	90	90	6%	8%	12%	13%	13%	13%
2005	765	23	40	76	86	89	89	3%	5%	10%	11%	12%	12%
2006	762	39	75	123	129	130	131	5%	10%	16%	17%	17%	17%
2007	746	38	57	81	87	88	89	5%	8%	11%	12%	12%	12%
2008	586	20	28	33	46	47	—	3%	5%	6%	8%	8%	—
2009	605	22	22	31	31	—	—	4%	4%	5%	5%	—	—
2010	565	8	19	23	—	—	—	1%	3%	4%	—	—	—
2011	547	2	5	—	—	—	—	0%	1%	—	—	—	—

Entry Year	Number 1st Placements	Cumulative Number Discharged to Adoption, Children 6 to 12						Cumulative Percent Discharged to Adoption, Children 6 to 12					
		Within 6 Months	Within 1 Year	Within 2 Years	Within 3 Years	Within 4 Years	Within 5 Years	Within 6 Months	Within 1 Year	Within 2 Years	Within 3 Years	Within 4 Years	Within 5 Years
2004	688	0	0	9	34	56	71	0%	0%	1%	5%	8%	10%
2005	765	0	0	4	19	35	47	0%	0%	1%	2%	5%	6%
2006	762	0	0	2	21	42	59	0%	0%	0%	3%	6%	8%
2007	746	0	3	5	29	57	75	0%	0%	1%	4%	8%	10%
2008	586	0	0	1	36	50	—	0%	0%	0%	6%	9%	—
2009	605	0	0	9	31	—	—	0%	0%	1%	5%	—	—
2010	565	0	0	2	—	—	—	0%	0%	0%	—	—	—
2011	547	0	0	—	—	—	—	0%	0%	—	—	—	—

Entry Year	Number 1st Placements	Cumulative Number who Ran Away, Children 6 to 12						Cumulative Percent who Ran Away, Children 6 to 12					
		Within 6 Months	Within 1 Year	Within 2 Years	Within 3 Years	Within 4 Years	Within 5 Years	Within 6 Months	Within 1 Year	Within 2 Years	Within 3 Years	Within 4 Years	Within 5 Years
2004	688	4	4	5	8	12	15	1%	1%	1%	1%	2%	2%
2005	765	5	6	7	8	10	11	1%	1%	1%	1%	1%	1%
2006	762	2	3	5	6	7	10	0%	0%	1%	1%	1%	1%
2007	746	2	4	7	7	8	8	0%	1%	1%	1%	1%	1%
2008	586	3	3	4	4	4	—	1%	1%	1%	1%	1%	—
2009	605	0	0	1	2	—	—	0%	0%	0%	0%	—	—
2010	565	0	0	0	—	—	—	0%	0%	0%	—	—	—
2011	547	1	1	—	—	—	—	0%	0%	—	—	—	—

Entry Year	Number 1st Placements	Cumulative Number who Aged Out, Children 6 to 12						Cumulative Percent who Aged Out, Children 6 to 12					
		Within 6 Months	Within 1 Year	Within 2 Years	Within 3 Years	Within 4 Years	Within 5 Years	Within 6 Months	Within 1 Year	Within 2 Years	Within 3 Years	Within 4 Years	Within 5 Years
2004	688	0	0	0	0	0	0	0%	0%	0%	0%	0%	0%
2005	765	0	0	0	0	0	0	0%	0%	0%	0%	0%	0%
2006	762	0	0	0	0	0	0	0%	0%	0%	0%	0%	0%
2007	746	0	0	0	0	0	0	0%	0%	0%	0%	0%	0%

2008	586	0	0	0	0	0	—	0%	0%	0%	0%	0%	—
2009	605	0	0	0	0	—	—	0%	0%	0%	0%	—	—
2010	565	0	0	0	—	—	—	0%	0%	0%	—	—	—
2011	547	0	0	—	—	—	—	0%	0%	—	—	—	—

Cumulative Number who Exited to Other, Children 6 to 12								Cumulative Percent who Exited to Other, Children 6 to 12					
2004	688	26	34	36	37	38	38	4%	5%	5%	5%	6%	6%
2005	765	22	27	29	31	31	31	3%	4%	4%	4%	4%	4%
2006	762	20	24	24	24	24	24	3%	3%	3%	3%	3%	3%
2007	746	16	17	20	21	21	22	2%	2%	3%	3%	3%	3%
2008	586	7	8	8	9	9	—	1%	1%	1%	2%	2%	—
2009	605	11	14	16	16	—	—	2%	2%	3%	3%	—	—
2010	565	26	28	30	—	—	—	5%	5%	5%	—	—	—
2011	547	12	13	—	—	—	—	2%	2%	—	—	—	—

Number Still In Care, Children 6 to 12								Percent Still In Care, Children 6 to 12					
2004	688	358	272	170	115	82	62	52%	40%	25%	17%	12%	9%
2005	765	354	269	160	116	88	70	46%	35%	21%	15%	12%	9%
2006	762	404	294	163	111	84	61	53%	39%	21%	15%	11%	8%
2007	746	368	265	154	100	65	41	49%	36%	21%	13%	9%	5%
2008	586	249	172	115	51	33	—	42%	29%	20%	9%	6%	—
2009	605	291	221	133	102	—	—	48%	37%	22%	17%	—	—
2010	565	317	200	149	—	—	—	56%	35%	26%	—	—	—
2011	547	342	314	—	—	—	—	63%	57%	—	—	—	—

(Note: Shaded cells indicate where some but not all possible discharges have been observed for that interval.)
(Most recent database update:12-31-2011)

Copyright © 2001–2011. Chapin Hall Center for Children. All rights reserved.

Close this window

Table 24: First Entrants, Number and Percent by Exit Type, Children 13 to 17

(NV, All Counties)

Entry Year	Number 1st Placements	Cumulative Number Discharged to Reunification, Children 13 to 17						Cumulative Percent Discharged to Reunification, Children 13 to 17					
		Within 6 Months	Within 1 Year	Within 2 Years	Within 3 Years	Within 4 Years	Within 5 Years	Within 6 Months	Within 1 Year	Within 2 Years	Within 3 Years	Within 4 Years	Within 5 Years
2004	347	112	135	156	157	158	159	32%	39%	45%	45%	46%	46%
2005	375	166	184	204	206	207	207	44%	49%	54%	55%	55%	55%
2006	402	128	143	169	177	178	179	32%	36%	42%	44%	44%	45%
2007	409	170	193	221	222	223	223	42%	47%	54%	54%	55%	55%
2008	406	175	211	234	236	236	--	43%	52%	58%	58%	58%	--
2009	364	139	184	206	206	--	--	38%	51%	57%	57%	--	--
2010	291	100	124	130	--	--	--	34%	43%	45%	--	--	--
2011	313	106	113	--	--	--	--	34%	36%	--	--	--	--

Entry Year	Number 1st Placements	Cumulative Number Discharged to Relative, Children 13 to 17						Cumulative Percent Discharged to Relative, Children 13 to 17					
		Within 6 Months	Within 1 Year	Within 2 Years	Within 3 Years	Within 4 Years	Within 5 Years	Within 6 Months	Within 1 Year	Within 2 Years	Within 3 Years	Within 4 Years	Within 5 Years
2004	347	18	21	30	31	32	32	5%	6%	9%	9%	9%	9%
2005	375	15	19	25	27	28	28	4%	5%	7%	7%	7%	7%
2006	402	18	30	40	41	43	43	4%	7%	10%	10%	11%	11%
2007	409	12	15	23	24	25	25	3%	4%	6%	6%	6%	6%
2008	406	19	21	25	30	31	--	5%	5%	6%	7%	8%	--
2009	364	10	16	21	21	--	--	3%	4%	6%	6%	--	--
2010	291	11	14	14	--	--	--	4%	5%	5%	--	--	--
2011	313	8	9	--	--	--	--	3%	3%	--	--	--	--

Entry Year	Number 1st Placements	Cumulative Number Discharged to Adoption, Children 13 to 17						Cumulative Percent Discharged to Adoption, Children 13 to 17					
		Within 6 Months	Within 1 Year	Within 2 Years	Within 3 Years	Within 4 Years	Within 5 Years	Within 6 Months	Within 1 Year	Within 2 Years	Within 3 Years	Within 4 Years	Within 5 Years
2004	347	0	0	0	1	3	3	0%	0%	0%	0%	1%	1%
2005	375	0	0	1	4	6	6	0%	0%	0%	1%	2%	2%
2006	402	0	0	0	1	2	3	0%	0%	0%	0%	0%	1%
2007	409	0	0	1	1	3	4	0%	0%	0%	0%	1%	1%
2008	406	0	0	3	7	9	--	0%	0%	1%	2%	2%	--
2009	364	0	0	2	3	--	--	0%	0%	1%	1%	--	--
2010	291	0	0	0	--	--	--	0%	0%	0%	--	--	--
2011	313	0	0	--	--	--	--	0%	0%	--	--	--	--

Entry Year	Number 1st Placements	Cumulative Number who Ran Away, Children 13 to 17						Cumulative Percent who Ran Away, Children 13 to 17					
		Within 6 Months	Within 1 Year	Within 2 Years	Within 3 Years	Within 4 Years	Within 5 Years	Within 6 Months	Within 1 Year	Within 2 Years	Within 3 Years	Within 4 Years	Within 5 Years
2004	347	23	33	41	50	52	53	7%	10%	12%	14%	15%	15%
2005	375	21	25	37	40	43	43	6%	7%	10%	11%	11%	11%
2006	402	36	50	61	68	70	71	9%	12%	15%	17%	17%	18%
2007	409	35	43	50	56	56	56	9%	11%	12%	14%	14%	14%
2008	406	38	42	45	47	48	--	9%	10%	11%	12%	12%	--
2009	364	27	34	41	41	--	--	7%	9%	11%	11%	--	--
2010	291	24	27	29	--	--	--	8%	9%	10%	--	--	--
2011	313	22	22	--	--	--	--	7%	7%	--	--	--	--

Entry Year	Number 1st Placements	Cumulative Number who Aged Out, Children 13 to 17						Cumulative Percent who Aged Out, Children 13 to 17					
		Within 6 Months	Within 1 Year	Within 2 Years	Within 3 Years	Within 4 Years	Within 5 Years	Within 6 Months	Within 1 Year	Within 2 Years	Within 3 Years	Within 4 Years	Within 5 Years
2004	347	0	1	5	15	25	41	0%	0%	1%	4%	7%	12%

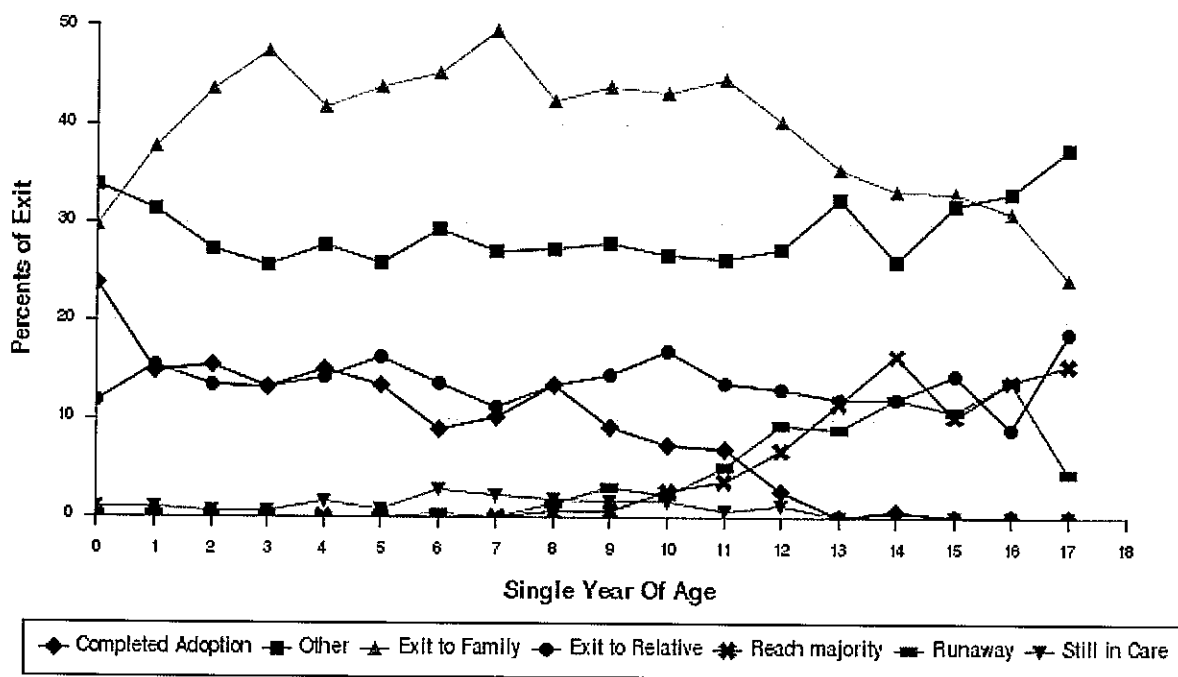
2005	375	2	11	17	27	37	45	1%	3%	5%	7%	10%	12%
2006	402	2	9	24	37	51	63	0%	2%	6%	9%	13%	16%
2007	409	5	9	22	40	56	58	1%	2%	5%	10%	14%	14%
2008	406	5	10	25	36	39	--	1%	2%	6%	9%	10%	--
2009	364	6	15	26	30	--	--	2%	4%	7%	8%	--	--
2010	291	1	7	12	--	--	--	0%	2%	4%	--	--	--
2011	313	1	1	--	--	--	--	0%	0%	--	--	--	--

Cumulative Number who Exited to Other, Children 13 to 17								Cumulative Percent who Exited to Other, Children 13 to 17					
2004	347	27	31	34	37	38	41	8%	9%	10%	11%	11%	12%
2005	375	24	25	31	36	38	38	6%	7%	8%	10%	10%	10%
2006	402	18	21	22	25	26	29	4%	5%	5%	6%	6%	7%
2007	409	19	19	20	22	25	28	5%	5%	5%	5%	6%	7%
2008	406	12	13	13	18	18	--	3%	3%	3%	4%	4%	--
2009	364	11	15	24	25	--	--	3%	4%	7%	7%	--	--
2010	291	18	22	24	--	--	--	6%	8%	8%	--	--	--
2011	313	7	7	--	--	--	--	2%	2%	--	--	--	--

Number Still In Care, Children 13 to 17								Percent Still In Care, Children 13 to 17					
2004	347	167	126	81	56	39	18	48%	36%	23%	16%	11%	5%
2005	375	147	111	60	35	16	8	39%	30%	16%	9%	4%	2%
2006	402	200	149	86	53	32	14	50%	37%	21%	13%	8%	3%
2007	409	168	130	72	44	21	15	41%	32%	18%	11%	5%	4%
2008	406	157	109	61	32	25	--	39%	27%	15%	8%	6%	--
2009	364	171	100	44	38	--	--	47%	27%	12%	10%	--	--
2010	291	137	97	82	--	--	--	47%	33%	28%	--	--	--
2011	313	169	161	--	--	--	--	54%	51%	--	--	--	--

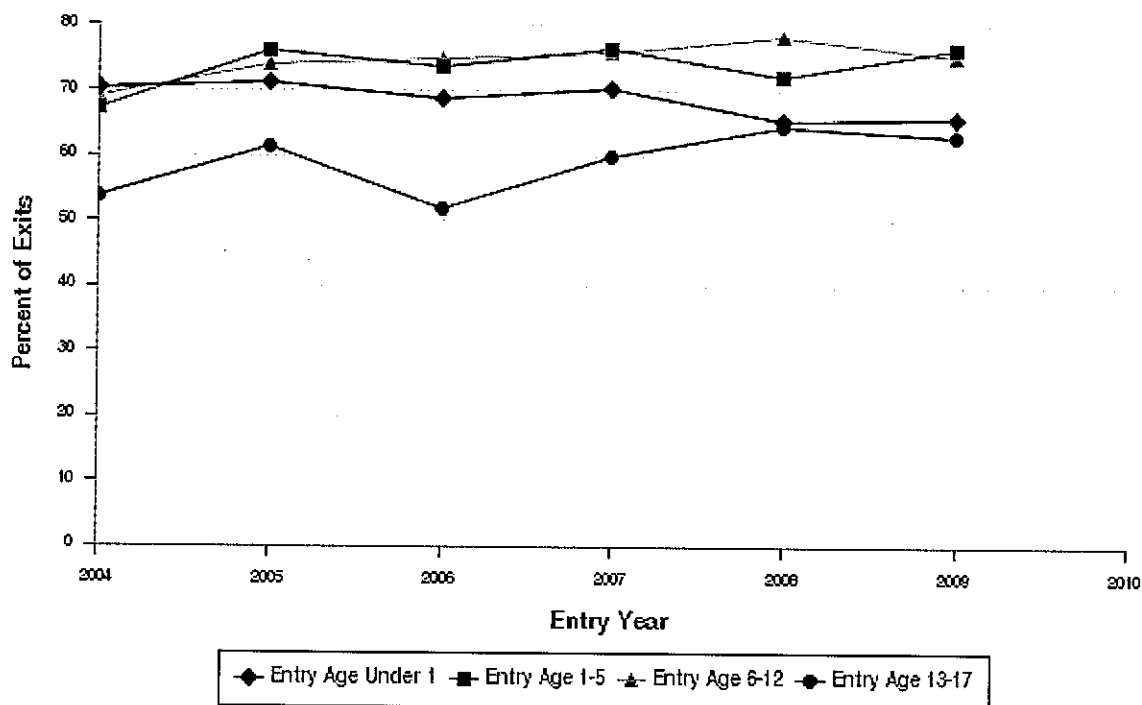
(Note: Shaded cells indicate where some but not all possible discharges have been observed for that interval.)
(Most recent database update:12-31-2011)

Figure 3: Exit Type from First Spell as of December 31, 2008 by Age at Entry, First Entrants, 2001-2003
(NV, All Counties)



(Most recent database update: 12-31-2011)

Figure 4: Cumulative Percent Discharged to Permanent Exits Within 2 Years by Age At Entry
(NV, All Counties)



(Most recent database update: 12-31-2011)

(Note: The percent discharged to permanency is the sum of the percent discharged to reunification, relatives, and adoption.)

PLACEMENT STABILITY

Close this window

Table 6: Number and Percent of All First Entries by First Placement Type and Age

(NV, All Counties)

All First Entries										
Entry Year	All First Entries	Number By Placement Type				All First Entries	Percent By Placement Type			
		Foster	Relative	Congregate	Other		Foster	Relative	Congregate	Other
2004	2,339	215	171	1,483	470	100%	9%	7%	63%	20%
2005	2,826	195	343	1,762	526	100%	7%	12%	62%	19%
2006	2,817	266	528	1,460	563	100%	9%	19%	52%	20%
2007	2,844	403	590	1,334	517	100%	14%	21%	47%	18%
2008	2,354	885	480	645	344	100%	38%	20%	27%	15%
2009	2,209	1,102	481	366	260	100%	50%	22%	17%	12%
2010	2,196	1,103	581	282	230	100%	50%	26%	13%	10%
2011	2,106	1,017	555	309	225	100%	48%	26%	15%	11%

Children Under 1 At Entry										
Entry Year	Children Under 1 At Entry	Number By Placement Type				Children Under 1 At Entry	Percent By Placement Type			
		Foster	Relative	Congregate	Other		Foster	Relative	Congregate	Other
2004	561	55	22	152	332	100%	10%	4%	27%	59%
2005	749	71	43	219	416	100%	9%	6%	29%	56%
2006	758	80	66	193	419	100%	11%	9%	25%	55%
2007	732	82	73	181	396	100%	11%	10%	25%	54%
2008	570	163	62	78	267	100%	29%	11%	14%	47%
2009	502	216	61	24	201	100%	43%	12%	5%	40%
2010	528	226	103	15	184	100%	43%	20%	3%	35%
2011	486	209	82	27	168	100%	43%	17%	6%	35%

Children 1-5 At Entry										
Entry Year	Children 1-5 At Entry	Number By Placement Type				Children 1-5 At Entry	Percent By Placement Type			
		Foster	Relative	Congregate	Other		Foster	Relative	Congregate	Other
2004	743	56	62	570	55	100%	8%	8%	77%	7%
2005	937	62	154	663	58	100%	7%	16%	71%	6%
2006	895	71	211	550	63	100%	8%	24%	61%	7%
2007	957	113	256	535	53	100%	12%	27%	56%	6%
2008	792	328	188	250	26	100%	41%	24%	32%	3%
2009	738	424	192	93	29	100%	57%	26%	13%	4%
2010	812	467	256	70	19	100%	58%	32%	9%	2%
2011	760	389	240	110	21	100%	51%	32%	14%	3%

Children 6-12 At Entry										
Entry Year	Children 6-12 At Entry	Number By Placement Type				Children 6-12 At Entry	Percent By Placement Type			
		Foster	Relative	Congregate	Other		Foster	Relative	Congregate	Other

Year	At Entry	Foster	Relative	Congregate	Other	At Entry	Foster	Relative	Congregate	Other
2004	688	54	66	530	38	100%	8%	10%	77%	6%
2005	765	39	111	590	25	100%	5%	15%	77%	3%
2006	762	61	168	488	45	100%	8%	22%	64%	6%
2007	746	130	187	400	29	100%	17%	25%	54%	4%
2008	586	247	147	179	13	100%	42%	25%	31%	2%
2009	605	309	154	134	8	100%	51%	25%	22%	1%
2010	565	283	165	107	10	100%	50%	29%	19%	2%
2011	547	291	162	84	10	100%	53%	30%	15%	2%

Children 13-17 At Entry

Entry Year	Children 13-17 At Entry	Number By Placement Type				Children 13-17 At Entry	Percent By Placement Type			
		Foster	Relative	Congregate	Other		Foster	Relative	Congregate	Other
2004	347	50	21	231	45	100%	14%	6%	67%	13%
2005	375	23	35	290	27	100%	6%	9%	77%	7%
2006	402	54	83	229	36	100%	13%	21%	57%	9%
2007	409	78	74	218	39	100%	19%	18%	53%	10%
2008	406	147	83	138	38	100%	36%	20%	34%	9%
2009	364	153	74	115	22	100%	42%	20%	32%	6%
2010	291	127	57	90	17	100%	44%	20%	31%	6%
2011	313	128	71	88	26	100%	41%	23%	28%	8%

(Most recent database update:12-31-2011)

Copyright © 2001–2011. Chapin Hall Center for Children. All rights reserved.

Close this window

Table 7: Number and Percent of All First Entries by Predominant Placement Type and Age

(NV, All Counties)

All First Entries												
Entry Year	All First Entries	Number By Placement Type					All First Entries	Percent By Placement Type				
		Foster	Relative	Congregate	Other	Mixed		Foster	Relative	Congregate	Other	Mixed
2004	2,339	773	507	782	224	53	100%	33%	22%	33%	10%	2%
2005	2,826	701	980	932	151	62	100%	25%	35%	33%	5%	2%
2006	2,817	713	1,156	741	158	49	100%	25%	41%	26%	6%	2%
2007	2,844	853	1,218	609	117	47	100%	30%	43%	21%	4%	2%
2008	2,354	1,000	893	358	71	32	100%	42%	38%	15%	3%	1%
2009	2,209	1,018	911	211	47	22	100%	46%	41%	10%	2%	1%
2010	2,196	1,114	882	153	30	17	100%	51%	40%	7%	1%	1%
2011	2,106	1,040	847	167	37	15	100%	49%	40%	8%	2%	1%

Children Under 1 At Entry												
Entry Year	Children Under 1 At Entry	Number By Placement Type					Children Under 1 At Entry	Percent By Placement Type				
		Foster	Relative	Congregate	Other	Mixed		Foster	Relative	Congregate	Other	Mixed
2004	561	208	110	123	112	8	100%	37%	20%	22%	20%	1%
2005	749	252	263	144	74	16	100%	34%	35%	19%	10%	2%
2006	758	276	296	80	93	13	100%	36%	39%	11%	12%	2%
2007	732	290	325	54	56	7	100%	40%	44%	7%	8%	1%
2008	570	297	216	26	26	5	100%	52%	38%	5%	5%	1%
2009	502	284	196	5	15	2	100%	57%	39%	1%	3%	0%
2010	528	308	201	4	12	3	100%	58%	38%	1%	2%	1%
2011	486	280	179	8	13	6	100%	58%	37%	2%	3%	1%

Children 1-5 At Entry												
Entry Year	Children 1-5 At Entry	Number By Placement Type					Children 1-5 At Entry	Percent By Placement Type				
		Foster	Relative	Congregate	Other	Mixed		Foster	Relative	Congregate	Other	Mixed
2004	743	242	196	255	39	11	100%	33%	26%	34%	5%	1%
2005	937	226	373	293	33	12	100%	24%	40%	31%	4%	1%
2006	895	197	413	250	23	12	100%	22%	46%	28%	3%	1%
2007	957	267	468	193	16	13	100%	28%	49%	20%	2%	1%
2008	792	353	323	101	5	10	100%	45%	41%	13%	1%	1%
2009	738	333	368	30	4	3	100%	45%	50%	4%	1%	0%
2010	812	420	360	25	5	2	100%	52%	44%	3%	1%	0%
2011	760	382	335	36	5	2	100%	50%	44%	5%	1%	0%

Children 6-12 At Entry												
Entry Year	Children 6-12 At Entry	Number By Placement Type					Children 6-12 At Entry	Percent By Placement Type				
		Foster	Relative	Congregate	Other	Mixed		Foster	Relative	Congregate	Other	Mixed
2004	688	200	155	269	43	21	100%	29%	23%	39%	6%	3%
2005	765	142	275	307	20	21	100%	19%	36%	40%	3%	3%

2006	762	149	319	266	16	12	100%	20%	42%	35%	2%	2%
2007	746	177	326	210	14	19	100%	24%	44%	28%	2%	3%
2008	586	223	234	109	8	12	100%	38%	40%	19%	1%	2%
2009	605	261	245	84	4	11	100%	43%	40%	14%	1%	2%
2010	565	263	242	54	1	5	100%	47%	43%	10%	0%	1%
2011	547	252	238	53	2	2	100%	46%	44%	10%	0%	0%

Children 13-17 At Entry

Entry Year	Children 13-17 At Entry	Number By Placement Type					Children 13-17 At Entry	Percent By Placement Type				
		Foster	Relative	Congregate	Other	Mixed		Foster	Relative	Congregate	Other	Mixed
2004	347	123	46	135	30	13	100%	35%	13%	39%	9%	4%
2005	375	81	69	188	24	13	100%	22%	18%	50%	6%	3%
2006	402	91	128	145	26	12	100%	23%	32%	36%	6%	3%
2007	409	119	99	152	31	8	100%	29%	24%	37%	8%	2%
2008	406	127	120	122	32	5	100%	31%	30%	30%	8%	1%
2009	364	140	102	92	24	6	100%	38%	28%	25%	7%	2%
2010	291	123	79	70	12	7	100%	42%	27%	24%	4%	2%
2011	313	126	95	70	17	5	100%	40%	30%	22%	5%	2%

(Most recent database update:12-31-2011)

Copyright © 2001–2011. Chapin Hall Center for Children. All rights reserved.

Close this window

Table 8: Number and Percent of Movements Observed

(NV, All Counties)

Entry Year	All First Entries	Number By Number Of Moves				All First Entries	Percent By Number Of Moves			
		No Moves	One Moves	Two Moves	Three or More Moves		No Moves	One Moves	Two Moves	Three or More Moves
2004	2,339	813	538	331	657	100%	35%	23%	14%	28%
2005	2,826	985	778	394	669	100%	35%	28%	14%	24%
2006	2,817	949	841	442	585	100%	34%	30%	16%	21%
2007	2,844	890	896	448	610	100%	31%	32%	16%	21%
2008	2,354	805	744	371	434	100%	34%	32%	16%	18%
2009	2,209	775	715	359	360	100%	35%	32%	16%	16%
2010	2,196	811	698	321	366	100%	37%	32%	15%	17%
2011	2,106	923	703	267	213	100%	44%	33%	13%	10%

(Note: For more recent entry groups, less time will have elapsed to observe movement.)
 (Most recent database update:12-31-2011)

Copyright © 2001–2011. Chapin Hall Center for Children. All rights reserved.

[Close this window](#)**Table 9: Number of Movements Observed Per Child by Duration Intervals**

(NV, All Counties)

Entry Year	6 Months and Under	7 to 12 Months	13 to 18 Months	19 to 24 Months	25 to 30 Months	31 to 36 Months	37 to 42 Months
2004	1.29	0.59	0.44	0.26	0.29	0.29	0.33
2005	1.22	0.35	0.35	0.24	0.19	0.20	0.17
2006	1.09	0.43	0.27	0.30	0.29	0.27	0.28
2007	1.16	0.38	0.25	0.23	0.22	0.22	0.25
2008	1.04	0.30	0.32	0.32	0.22	0.31	--
2009	1.02	0.34	0.29	0.28	--	--	--
2010	1.06	0.34	--	--	--	--	--
2011	--	--	--	--	--	--	--

(Most recent database update:12-31-2011)

Copyright © 2001–2011. Chapin Hall Center for Children. All rights reserved.

RE-ENTRY

Close this window

Table 13: Likelihood of Reentry from Reunification, Relative, Runaway, or Other Exit by Entry Cohort

(NV, All Counties)

All Exits (Except Adoption and Reach Majority)									
Entry Year	Total Entries To First Spell	Total Exits	Exits as a Percent of Entries	Total Reentries To Date	Total Reentries w/in 1 Year	Total Reentries as Percent of Entries	Total Reentries as Percent of Exits	Reentries w/in 1 Year as Percent of Entries	Reentries w/in 1 Year as Percent of Exits
2004	2,339	1,787	76%	434	245	19%	24%	10%	14%
2005	2,826	2,232	79%	617	357	22%	28%	13%	16%
2006	2,817	2,204	78%	555	346	20%	25%	12%	16%
2007	2,844	2,239	79%	535	361	19%	24%	13%	16%
2008	2,354	1,793	76%	336	234	14%	19%	10%	13%
2009	2,209	1,628	74%	295	222	13%	18%	10%	14%
2010	2,196	1,421	65%	203	193	9%	14%	9%	14%
2011	2,106	772	37%	76	76	4%	10%	4%	10%
Exit to Reunification									
2004		1,245		313	180		25%		14%
2005		1,686		486	290		29%		17%
2006		1,604		429	267		27%		17%
2007		1,804		459	299		25%		17%
2008		1,543		296	200		19%		13%
2009		1,410		257	191		18%		14%
2010		1,219		160	151		13%		12%
2011		679		60	60		9%		9%
Exit to Relative									
2004		292		40	13		14%		4%
2005		335		60	13		18%		4%
2006		390		43	12		11%		3%
2007		259		26	16		10%		6%
2008		121		0	0		0%		0%
2009		92		3	2		3%		2%
2010		77		0	0		0%		0%
2011		31		3	3		10%		10%
Exit to Runaway									
2004		71		46	42		65%		59%
2005		55		37	32		67%		58%
2006		81		60	57		74%		70%
2007		64		42	40		66%		63%
2008		52		33	31		63%		60%

2009	43	26	25	60%	58%
2010	29	19	19	66%	66%
2011	23	12	12	52%	52%

Exit to Other

2004	179	35	10	20%	6%
2005	156	34	22	22%	14%
2006	129	23	10	18%	8%
2007	112	8	6	7%	5%
2008	77	7	3	9%	4%
2009	83	9	4	11%	5%
2010	96	24	23	25%	24%
2011	39	1	1	3%	3%

(Most recent database update:12-31-2011)

Copyright © 2001–2011, Chapin Hall Center for Children. All rights reserved.

Close this window

Table 14: Likelihood of Reentry from Reunification, Relative, Runaway, or Other Exit by Exit Cohort

(NV, All Counties)

All Exits (Except Adoption)					
Exit Year	Total Exits	Total Reentries To Date	Total Reentries w/in 1 Year	Total Reentries as Percent of Exits	Reentries w/in 1 Year as Percent of Exits
2005	2,077	577	342	28%	16%
2006	2,178	590	353	27%	16%
2007	2,288	562	346	25%	15%
2008	2,089	439	320	21%	15%
2009	1,750	359	249	21%	14%
2010	1,544	270	241	17%	16%
2011	1,630	166	166	10%	10%

Exit to Reunification					
Exit Year	Total Exits	Total Reentries To Date	Total Reentries w/in 1 Year	Total Reentries as Percent of Exits	Reentries w/in 1 Year as Percent of Exits
2005	1,522	448	272	29%	18%
2006	1,583	450	276	28%	17%
2007	1,690	438	254	26%	15%
2008	1,653	368	261	22%	16%
2009	1,491	314	212	21%	14%
2010	1,282	207	181	16%	14%
2011	1,405	131	131	9%	9%

Exit to Relative					
Exit Year	Total Exits	Total Reentries To Date	Total Reentries w/in 1 Year	Total Reentries as Percent of Exits	Reentries w/in 1 Year as Percent of Exits
2005	254	46	11	18%	4%
2006	342	54	12	16%	4%
2007	383	46	20	12%	5%
2008	264	7	2	3%	1%
2009	96	0	0	0%	0%
2010	103	4	3	4%	3%
2011	99	3	3	3%	3%

Exit to Runaway					
Exit Year	Total Exits	Total Reentries To Date	Total Reentries w/in 1 Year	Total Reentries as Percent of Exits	Reentries w/in 1 Year as Percent of Exits
2005	70	41	37	59%	53%
2006	79	56	52	71%	66%
2007	100	68	66	68%	66%
2008	93	56	54	60%	58%
2009	58	35	32	60%	55%
2010	50	36	35	72%	70%
2011	46	28	28	61%	61%

Exit to Other					
Exit Year	Total Exits	Total Reentries To Date	Total Reentries w/in 1 Year	Total Reentries as Percent of Exits	Reentries w/in 1 Year as Percent of Exits
2005	231	42	22	18%	10%

2006	174	30	13	17%	7%
2007	115	10	6	9%	5%
2008	79	8	3	10%	4%
2009	105	10	5	10%	5%
2010	109	23	22	21%	20%
2011	80	4	4	5%	5%

(Most recent database update:12-31-2011)

Copyright © 2001–2011. Chapin Hall Center for Children. All rights reserved.

[Close this window](#)**Table 15: Number of and Percent of All Foster Care Entries by First or Not First Entries**

(NV, All Counties)

Entry Year	All Entries	Number		Percent	
		First Entry	Not First Entry	First Entry	Not First Entry
2004	2,831	2,339	492	83%	17%
2005	3,426	2,826	600	82%	18%
2006	3,658	2,817	841	77%	23%
2007	3,668	2,844	824	78%	22%
2008	3,249	2,354	895	72%	28%
2009	3,008	2,209	799	73%	27%
2010	2,934	2,196	738	75%	25%
2011	2,875	2,106	769	73%	27%

(Most recent database update:12-31-2011)

Copyright © 2001–2011. Chapin Hall Center for Children. All rights reserved.

CASELOADS

[Close this window](#)**Table 16: Entries, Exits and Foster Care Caseload**

(NV, All Counties)

Year	Caseload at Year Start	Entries During Year	Exits During Year	Net Change
2005	3,412	3,426	2,878	548
2006	3,960	3,658	3,358	300
2007	4,260	3,668	3,401	267
2008	4,527	3,249	3,401	-152
2009	4,375	3,008	3,129	-121
2010	4,254	2,934	2,831	103
2011	4,357	2,875	3,279	-404

(Most recent database update:12-31-2011)

Copyright © 2001–2011. Chapin Hall Center for Children. All rights reserved.

Close this window

Table 17: Caseload Counts and Percents by Race/Ethnicity

(NV, All Counties)

Caseload Counts								
Year	Total Caseload at Year Start	White	African American	Hispanic	Asian and Pacific Islander	Native American	Other	Unknown
2005	3,412	1,736	945	592	77	53	9	0
2006	3,960	1,971	1,066	777	73	62	11	0
2007	4,260	1,982	1,228	884	94	64	7	1
2008	4,527	2,000	1,318	1,022	103	77	7	0
2009	4,375	1,848	1,317	1,042	94	70	4	0
2010	4,254	1,735	1,255	1,085	97	77	5	0
2011	4,357	1,752	1,295	1,139	86	79	4	2

Caseload Percents								
2005	100%	51%	28%	17%	2%	2%	0%	0%
2006	100%	50%	27%	20%	2%	2%	0%	0%
2007	100%	47%	29%	21%	2%	2%	0%	0%
2008	100%	44%	29%	23%	2%	2%	0%	0%
2009	100%	42%	30%	24%	2%	2%	0%	0%
2010	100%	41%	30%	26%	2%	2%	0%	0%
2011	100%	40%	30%	26%	2%	2%	0%	0%

(Most recent database update:12-31-2011)

Copyright © 2001–2011. Chapin Hall Center for Children. All rights reserved.

Close this window

Table 18: Caseload Counts by Age at Year Start

(NV, All Counties)

Caseload Counts						
Year	Total Caseload at Year Start	Age At Year Start				
		Under 1	1-5	6-12	13-17	Older Than 17
2005	3,412	278	1,186	1,075	767	106
2006	3,960	397	1,402	1,215	822	124
2007	4,260	397	1,536	1,298	880	149
2008	4,527	387	1,679	1,397	881	183
2009	4,375	307	1,677	1,301	899	191
2010	4,254	270	1,517	1,348	936	183
2011	4,357	294	1,590	1,438	902	133

Caseload Percents						
Year	Total Caseload at Year Start	Under 1	1-5	6-12	13-17	Older Than 17
2005	100%	8%	35%	32%	22%	3%
2006	100%	10%	35%	31%	21%	3%
2007	100%	9%	36%	30%	21%	3%
2008	100%	9%	37%	31%	19%	4%
2009	100%	7%	38%	30%	21%	4%
2010	100%	6%	36%	32%	22%	4%
2011	100%	7%	36%	33%	21%	3%

(Most recent database update:12-31-2011)

Copyright © 2001–2011. Chapin Hall Center for Children. All rights reserved.

Close this window

Table 19: Caseload Counts by Placement Type at Year Start

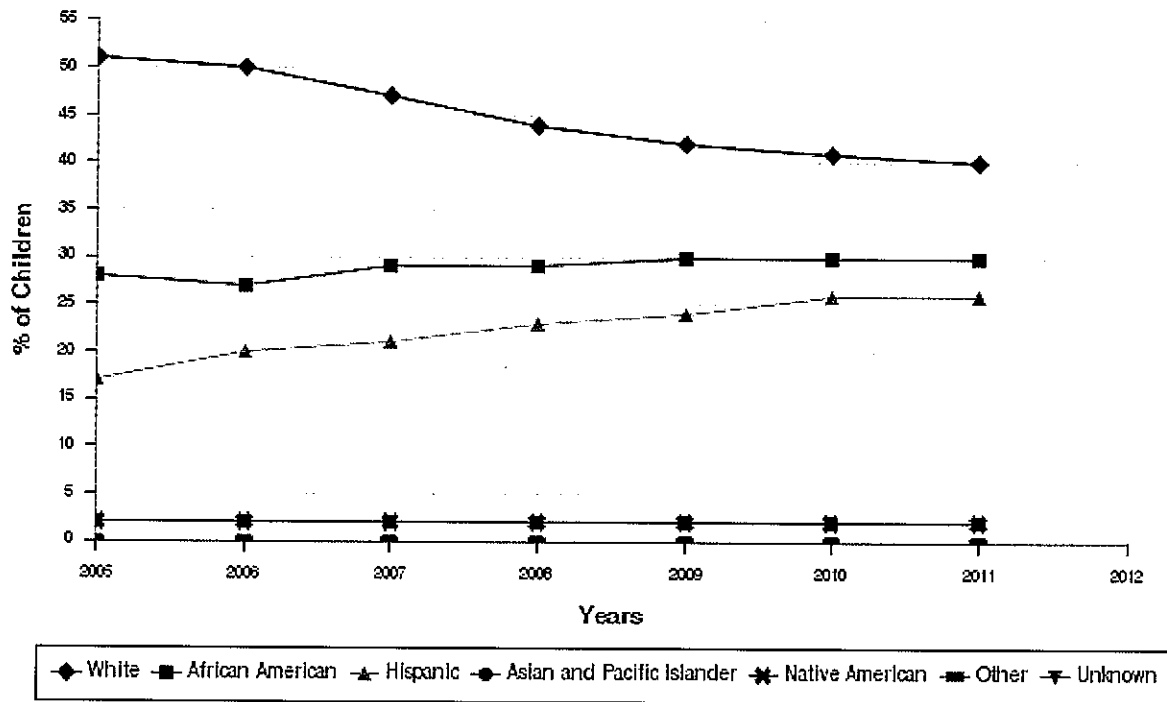
(NV, All Counties)

Caseload Counts					
Total Caseload at		Placement Type At Year Start			
Year	Year Start	Foster Care	Kinship	Congregate	Other
2005	3,412	1,893	852	305	362
2006	3,960	1,902	1,482	348	228
2007	4,260	1,672	1,847	550	191
2008	4,527	1,785	1,920	635	187
2009	4,375	1,729	1,826	656	164
2010	4,254	1,744	1,842	505	163
2011	4,357	1,912	1,875	449	121
Caseload Percents					
2005	100%	55%	25%	9%	11%
2006	100%	48%	37%	9%	6%
2007	100%	39%	43%	13%	4%
2008	100%	39%	42%	14%	4%
2009	100%	40%	42%	15%	4%
2010	100%	41%	43%	12%	4%
2011	100%	44%	43%	10%	3%

(Most recent database update:12-31-2011)

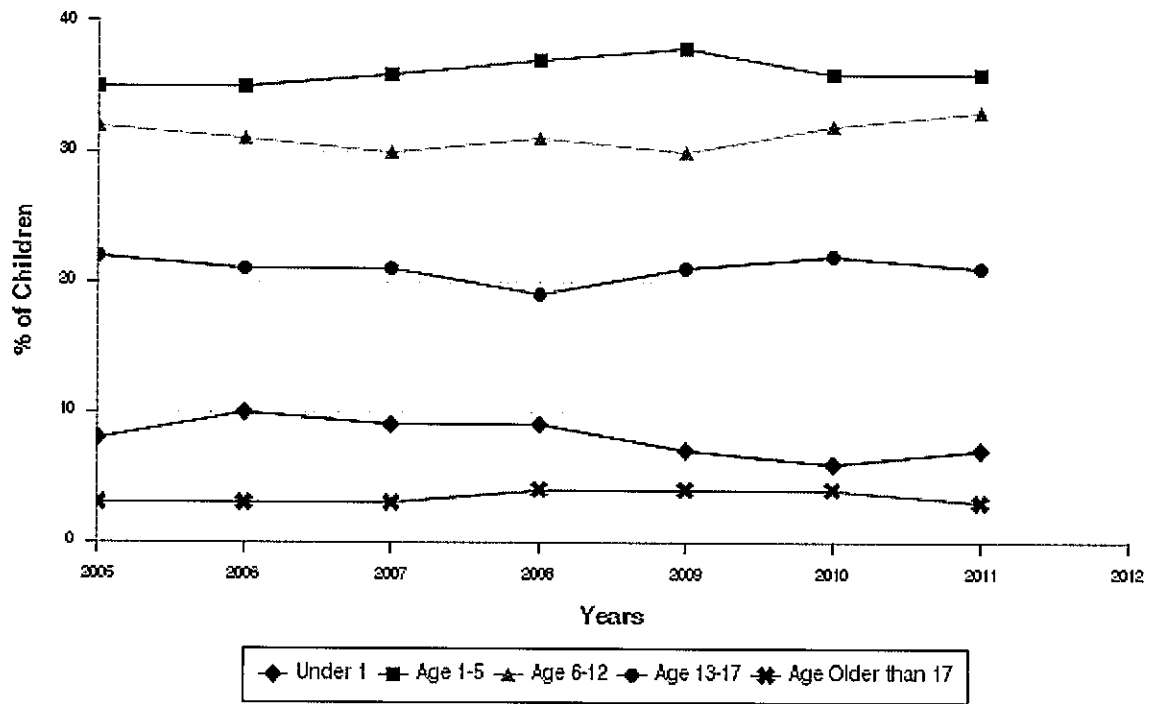
Copyright © 2001–2011. Chapin Hall Center for Children. All rights reserved.

Figure 6: Caseload Percents by Race/Ethnicity
(NV, All Counties)



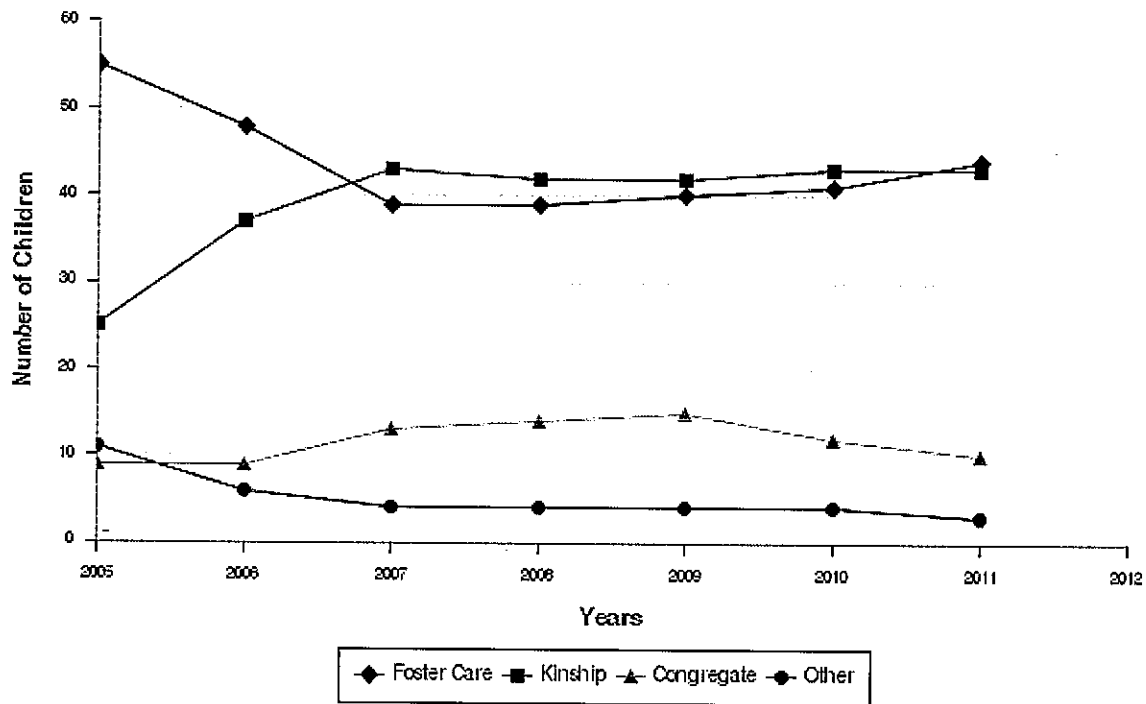
(Most recent database update: 12-31-2011)

Figure 7: Caseload Percents by Age at Year Start
(NV, All Counties)



(Most recent database update: 12-31-2011)

Figure 8: Caseload Percents by Placement Type at Year Start
(NV, All Counties)



(Most recent database update: 12-31-2011)



QUARTER 7
PIP 4.1.1 (A)
Statewide
Appendix 2

Clark County

[Public Folders](#)

Management Report Dashboard

[Intake/Investigation Dashboard](#)

[Perm/Adoption/In-Home Dashboard](#)

[Placement Dashboard](#)

[E](#)



xts.run								
						CAFW000000700		

Management Reports



? _ □



? _ □

	_i73440B303E6D	_i73440B303E6D
--	----------------	----------------

CPS Reports

Name
▶ Care Provider Report - CPS
▶ Daily - Child/Parent 30 Day Contact Report CPS
▶ Daily - CPS Child/Caseworker Contact Placement Change
▶ Daily - CPS Initial Contact Report
▶ Daily - Open Investigations Report
▶ Daily CPS Child/Parent Contacts within 14 Days of Assignment
▶ Initial Contact Report (Successful and Unsuccessful Contacts)
▶ Investigations Over 45 Days
▶ Monthly - CPS Child/Caseworker Contact Placement Change
▶ Monthly - CPS Child/Parent 30 Day Contact Report

	_IDC981C88E860	_IDC981C88E860
--	----------------	----------------

Permanency Reports

Name
▶ Daily - 30 Day Contact Report Perm
▶ Daily - Permanency Case Plan Report
▶ Daily - Permanency Contact within 3 Business Days of Placement Change
▶ Daily Child/Parent Contacts within 3 Business Days of Assignment
▶ Monthly - 30 Day Contact Report Perm (Date Range)
▶ Monthly - Perm Child/Caseworker Contact within 3 Business Days of Placement Change
▶ Monthly - Permanency Case Plan Summary
▶ Monthly Child/Parent Contacts within 3 Business Days of Assignment

(Date Range)

- ▶ Monthly - CPS Initial Contact Report (Date Range)
- ▶ Monthly - Open Investigations Summary
- ▶ Monthly CPS Child / Parent Contact within 14 days of Assignment

? _ □

_I40583B2F4F57

_I40583B2F4F57

Agency Summary Reports

Name ⇅

- ▶ Monthly - Agency Placement Change Contact Report
- ▶ Monthly - CPS Initial Contact Report (Date Range)
- ▶ Monthly Child / Parent Contact within 14 days of Assignment
- ▶ Monthly- Child/Parent 30 Day Contact Report (Date Range)

? _ □

? _ □

_ID8DFD6053C01

_ID8DFD6053C01

In-Home Reports

Name ⇅

- ▶ In-Home 30 Day Contact Report - Daily
- ▶ In-Home Case Plan Report - Daily
- ▶ In-Home Case Plan Report - Monthly
- ▶ In-Home Caseload Report
- ▶ In-Home Cases with Removal Status: Current
- ▶ In-Home Cases with Removal Status: Date Range
- ▶ In-Home In-Person Contact Report
- ▶ InHome Monthly - 30 Day Contact Report (Date Range)
- ▶ In-Home Parent Contact Summary
- ▶ In-Home Weekly Child Contacts
- ▶ In-Home Weekly Collateral/Provider Contacts
- ▶ In-Home Weekly Parent Contacts

[Public Folders](#)

[Management Report Dashboard](#)

[Intake/Investigation Dashboard](#)

[Perm/Adoption/In-Home Dashboard](#)

[Placement Dashboard](#)



xts.run								
						CAFW000000700		



? _ □



? _ □

_i6F47F77D5B58

_i6F47F77D5B58

Permanency/Adoption Reports

Name ⇅

- Adoption Reports
- EPSDT Reports
- ICPC Reports
- Recruitment Reports
- SED / Mental Health
- Case Note Log for Permanency Units
- Clark Custody Children with TPR (Excel)
- Clark Custody Children with TPR (PDF)
- Foster Care 18 Months or Longer
- In-Home and Permanency Case Loads
- Length of Stay
- Open Removals for Permanency
- Permanency Tracking Report
- Reunifications Report

_i6C5DC7FEC96E

_i6C5DC7FEC96E

Independent Living Reports

Name ⇅

- Age 12 and Above Workload Report
- Age 17 and Over Report
- Age Out List
- FSW IL Contact Report
- Independent Living Population
- Teen Parents
- YSW Contact Report



? _ □

_i32349093B606

_i32349093B606

Court Hearing Reports

- ▶ Sibling Groups Currently in Foster Care
- ▶ Subsidy Rate by Case worker

- Name** ◆
- ▶ Active Writs
 - ▶ ASFA and NRS Mandates
 - ▶ Court Hearing ASFA/NRS Compliance
 - ▶ Dispositional Hearing Detail
 - ▶ Dispositional Hearings without Results (Excel)
 - ▶ Hearings without Results
 - ▶ Removal to Adjudicatory Hearing



_ID443BA5C700E _ID443BA5C700E

In-Home Reports

- Name** ◆
- ▶ Case Note Log for InHome Units
 - ▶ In-Home Cases 9 Months or Older
 - ▶ InHome Monthly - Child/Parent 30 Day Contact Report
 - ▶ In-Home Recidivism
 - ▶ Parental to Out-of-Home Placement
 - ▶ Voluntary Services



QUARTER 7
PIP 4.1.1 (A)
Statewide
Appendix 3

**DIVISION OF CHILD AND FAMILY SERVICES
DATA MANAGEMENT**

DATA MANAGEMENT REPORTS

Report #	Name of Report	Frequency
CFS712	Placement Detail (Critical UNITY Elements)	Monthly
CFS732	Adoptions in 24 months	Monthly
CFS721	Foster Care Summary	Monthly
CFS790	Previous Adoption	Monthly
CFS792	Adoption Progress	Quarterly
CFS766	Children with Permanency Plan	Quarterly
CFS7B3	14 of 21 Months	Jan/July

Division of Child & Family Services	Critical UNITY Elements Completed	08-01-2012
Nevada Dept of Health & Human Services	As of 07-31-2012 for Rural - RURAL REGION AREA 1	18:00:22
		CFS712

Totals: 109

Nbr of workers with case loads assigned:	10
Average Case Load:	7.50
Range:	1-20

Regions	Number of Kids	Missing Adoption Ind	%	Missing Placement	%	Missing Permanency Goal	%	Missing Court Hearing	%
TOTAL	109	1	0.92	3	2.75	39	35.78	11	10.09
RURAL REGION AREA 1	109	1	0.92	3	2.75	39	35.78	11	10.09
Organization	Number of Kids	Missing Adoption Ind	%	Missing Placement	%	Missing Permanency Goal	%	Missing Court Hearing	%
RURAL REGION AREA 1	109	1	0.92	3	2.75	39	35.78	11	10.09
ELKO DO	50	0	0.00	0	0.00	25	50.00	10	20.00
ELY DO	30	0	0.00	0	0.00	3	10.00	1	3.33
WINNEMUCCA DO	22	1	4.55	0	0.00	6	27.27	0	0.00
BATTLE MTN DO	7	0	0.00	3	42.86	5	71.43	0	0.00
Worker - ELKO DO	Number of Kids	Missing Adoption Ind	%	Missing Placement	%	Missing Permanency Goal	%	Missing Court Hearing	%
MAXEY, LISA, M.	3	0	0.00	0	0.00	3	100.00	0	0.00
PANECALDO, ROBYN	27	0	0.00	0	0.00	20	74.07	5	18.52
SCHMELING, KIMBERLY	14	0	0.00	0	0.00	1	7.14	4	28.57
SHARP, CHERYL, L.	5	0	0.00	0	0.00	1	20.00	1	20.00
Worker - ELY DO	Number of Kids	Missing Adoption Ind	%	Missing Placement	%	Missing Permanency Goal	%	Missing Court Hearing	%
CAVENDER, FAYE	25	0	0.00	0	0.00	3	12.00	1	4.00
Worker - WINNEMUCCA DO	Number of Kids	Missing Adoption Ind	%	Missing Placement	%	Missing Permanency Goal	%	Missing Court Hearing	%

Regions	Number of Kids	Missing Adoption Ind	%	Missing Placement	%	Missing Permanency Goal	%	Missing Court Hearing	%
JONES, JANECE	4	1	25.00	0	0.00	2	50.00	0	0.00
ROGERS, KAREN	18	0	0.00	0	0.00	4	22.22	0	0.00
Worker - BATTLE MTN DO	Number of Kids	Missing Adoption Ind	%	Missing Placement	%	Missing Permanency Goal	%	Missing Court Hearing	%
SCHONEWEIS, LAURA, A.	7	0	0.00	3	42.86	5	71.43	0	0.00

SAMPLE

Adoptions less than 24 Months

09-06-2012

Division of Child & Family Services

for: Statewide

15:41:29

Run for Adoptions Finalized Between
08-01-2012 and 08-31-2012

CFS732

	Adoptions w Cstdy Date in UNITY	Percent of Total Adoptions w Cstdy Date	Total Months	Custody to Adoption - Average Months	Adopted less than 24Mos - Number	Adopted less than 24 Mos - Percent	Kids with TPR/Rlnqsh Dates Entered in UNITY	Custody to TPR/ Rlnqsh - Average Months	TPR/ Rlnqsh to Adoption Date - Average Months
TOTAL	72	100%	2,308	32	27	38%	66	21	12

Breakdown by Age at Adoption

AGE	Adoptions w Cstdy Date in UNITY	Percent of Total Adoptions w Cstdy Date	Total Months	Custody to Adoption - Average Months	Adopted less than 24 Mos - Number	Adopted less than 24 Mos - Percent	Kids with TPR/Rlnqsh Dates Entered in UNITY	Custody to TPR/ Rlnqsh - Average Months	TPR/ Rlnqsh to Adoption Date - Average Months
1	9	12.50%	159	17.66	9	100.00%	9	10.33	7.33
2	6	8.33%	156	26.00	2	33.33%	6	17.83	8.16
3	7	9.72%	198	28.28	4	57.14%	7	16.28	12.00
4	6	8.33%	228	38.00	1	16.66%	6	24.50	13.50
5	7	9.72%	250	35.71	1	14.28%	6	21.33	15.00
6	8	11.11%	297	37.12	2	25.00%	7	23.14	16.14
7	7	9.72%	220	31.42	3	42.85%	7	24.42	7.00
8	6	8.33%	261	43.50	1	16.66%	4	26.75	25.00
9	5	6.94%	176	35.20	1	20.00%	4	23.25	12.75
10	5	6.94%	151	30.20	2	40.00%	4	22.75	9.50
11	1	1.38%	43	43.00	0	0.00%	1	38.00	5.00
13	2	2.77%	75	37.50	0	0.00%	2	25.00	12.50
14	1	1.38%	19	19.00	1	100.00%	1	12.00	7.00
15	2	2.77%	75	37.50	0	0.00%	2	25.00	12.50

Breakdown by Gender

GENDER	Adoptions w Cstdy Date in UNITY	Percent of Total Adoptions w Cstdy Date	Total Months	Custody to Adoption - Average Months	Adopted less than 24 Mos - Number	Adopted less than 24 Mos - Percent	Kids with TPR/Rlnqsh Dates Entered in UNITY	Custody to TPR/ Rlnqsh - Average Months	TPR/ Rlnqsh to Adoption Date - Average Months
--------	---------------------------------------	--	--------------	---	---	--	--	--	---

Male	33	45.83%	1064	32.24	13	39.39%	31	20.29	12.29
Female	39	54.16%	1244	31.89	14	35.89%	35	20.97	11.48

Breakdown by Race									
RACE	Adoptions w Cstdy Date in UNITY	Percent of Total Adoptions w Cstdy Date	Total Months	Custody to Adoption - Average Months	Adopted less than 24 Mos - Number	Adopted less than 24 Mos - Percent	Kids with TPR/Rlnqsh Dates Entered in UNITY	Custody to TPR/Rlnqsh - Average Months	TPR/ Rlnqsh to Adoption Date - Average Months
African American	16	22.22%	617	38.56	1	6.25%	16	23.75	14.81
Am Indian/Alaska Native	1	1.38%	55	55.00	0	0.00%	1	26.00	29.00
Caucasian	56	77.77%	1712	30.57	25	44.64%	50	19.64	11.36
Unknown or Other	1	1.38%	24	24.00	1	100.00%	1	20.00	4.00

Number of Adoptions Finalized During Period with no Custody Date Entered in UNITY: 7

Unit	Wrkr Name			Wrkr ID			Adptsw Cstdy Dt		Cstdy to Adptn - Avg Mos		Adptd in 24 Mos		TPR/Rel Dt in UNITY	Avg Cstdy to TPR/Rel	Avg TPR/Rel to Adptn	Adptsw No Cstdy Dt
CARSON CITY 4	ONEILL, NANCY			1256021			8		23		8		100%	5	19	5
Pers	Pers ID Used for Cstdy	Sex	Birth Date	AA	AI	Asn	Cauc	NHP I	Adoption Date	TPR/Rel Date	Custody Date	Mos. - Cstdy to TPR/Rel	Mos. - TPR/Rel to Adpt	Mos. - Cstdy to Adp		
1851191 - PERES-MONTES, DOMINGO	SAME	M	09-14-2010				Y		08-21-2012	11-28-2011	09-15-2010	14	9	23		
1944497 - ASHLEY, PORSCHE, M.	1854837	F	09-23-2001				Y		08-01-2012	Not Found	10-10-2010	NA	NA	22		
1944498 - ASHLEY, PIPER, S.	1854830	F	11-14-2003				Y		08-01-2012	Not Found	10-10-2010	NA	NA	22		
1944499 - ASHLEY, MARTIN, H.	1854831	M	08-30-2005				Y		08-01-2012	Not Found	10-10-2010	NA	NA	22		
1946408 - ARMER, BREANNA, M.	1735469	F	08-30-2001				Y		08-08-2012	04-16-2012	08-07-2010	20	4	24		
1946410 - ARMER, HAILEY, M.	1736131	F	04-21-2003				Y		08-08-2012	04-16-2012	08-07-2010	20	4	24		
1946411 - ARMER, GABRIEL, F.	1736130	M	11-14-2004						08-08-2012	04-16-2012	08-07-2010	20	4	24		
1946413 - ARMER, NATALIE, J.	1736128	F	08-12-2006				Y		08-08-2012	04-16-2012	08-07-2010	20	4	24		
Unit	Wrkr Name			Wrkr ID			Adptsw Cstdy Dt		Cstdy to Adptn - Avg Mos		Adptd in 24 Mos		TPR/Rel Dt in UNITY	Avg Cstdy to TPR/Rel	Avg TPR/Rel to Adptn	Adptsw No Cstdy Dt
CLARK ADOPT SUBS A	FISCUS, VERONICA			4203			0		NA		0		NA	0	NA	NA
Pers	Pers ID Used for Cstdy	Sex	Birth Date	AA	AI	Asn	Cauc	NHP I	Adoption Date	TPR/Rel Date	Custody Date	Mos. - Cstdy to TPR/Rel	Mos. - TPR/Rel to Adpt	Mos. - Cstdy to Adp		

SAMPLE

Person JD	Name	Case ID	SSN	Episode Start	End	Episode Days	Birth Date	Age	Reason	Eligibility	Sibling Group	Sibling HLOC	Perm Goal	Conc Goal	Placement Type	Placement Description	Worker's Name	African Amer	Amer Indian	Asian	Cauc	NHIP	Aband	Declin
		1380112		06-21-2012	12-31-9999	40	09-05-2004	7							1021	COMBO FF REG	SCHONEWEIS, LAURA, A.							Y
		1258113		12-28-2009	12-31-9999	946	04-23-2002	10		A	C	Y	ADUN		1021	COMBO FF REG	CAVENDER, FAYE				Y			
		1376771		05-07-2012	12-31-9999	85	04-11-2007	5		A	C		RWPR	ADUN	1021	COMBO FF REG	HOLBROOK, BRANDY		Y					
		1376771		05-07-2012	12-31-9999	85	03-12-2011	1		A	A		RWPR	ADUN	1021	COMBO FF REG	HOLBROOK, BRANDY		Y					
		1376771		05-07-2012	12-31-9999	85	03-19-2009	3		A	C		RWPR	ADUN	1021	COMBO FF REG	HOLBROOK, BRANDY		Y					
		1338750		08-18-2010	12-31-9999	713	09-15-2002	9		A	C		RWPR		1021	COMBO FF REG	CAVENDER, FAYE				Y			
		1376971		02-13-2012	12-31-9999	169	06-16-2011	1		A					1021	COMBO FF REG	SCHMELING, KIMBERLY				Y			
		1338750		08-18-2010	12-31-9999	713	11-11-2001	10		A	C		RWPR		1021	COMBO FF REG	CAVENDER, FAYE				Y			
		1339666		07-02-2012	12-31-9999	29	03-30-2009	3			C				1021	COMBO FF REG	HOLBROOK, BRANDY				Y			
		1333921		05-22-2012	12-31-9999	70	06-05-2006	6		A	A				1021	COMBO FF REG	PANECALDO, ROBYN				Y			
		1367488		02-24-2011	12-31-9999	523	12-02-1996	15		A	A		ADUN	GRDS	1021	COMBO FF REG	SHARP, CHERYL, L.				Y			
		1334039		11-08-2011	12-31-9999	266	06-26-2009	3		A	A		RWPR		1021	COMBO FF REG	CAVENDER, FAYE				Y			
		1376021		03-26-2012	12-31-9999	127	12-26-2007	4		A	C		RWPR	ADRL	1021	COMBO FF REG	SCHMELING, KIMBERLY				Y			
		1376021		03-26-2012	12-31-9999	127	01-19-2012	0		A	C		RWPR	ADRL	1021	COMBO FF REG	SCHMELING, KIMBERLY				Y			
		1367035		10-27-2011	12-31-9999	278	04-06-2011	1			A				1021	COMBO FF REG	PANECALDO, ROBYN				Y			
		1375375		07-19-2012	12-31-9999	12	03-07-2011	1			C				1021	COMBO FF REG	JONES, JANEECE				Y			
		1375375		07-19-2012	12-31-9999	12	04-11-2012	0			C				1021	COMBO FF REG	JONES, JANEECE				Y			
		1359173		04-12-2011	12-31-9999	476	12-18-2008	3		A	C		RWPR	GBRL	1021	COMBO FF REG	CAVENDER, FAYE				Y			
		1374351		10-15-2011	12-31-9999	290	05-06-2009	3		A	C		RWPR	ADRL	1021	COMBO FF REG	SCHMELING, KIMBERLY				Y			

	Number	% of Previously Adopted Youths
Youth in Custody During Report Period:	731	
Youth in Custody During Report Period Who Were Previously Adopted:	24	
Youth with Parental Rights Rights Terminated (Currently):	10	41.67%
Youth with Parental Rights Rights Relinquished (Currently):	6	25.00%

Demographic Breakdown:**Gender**

Male:	12	50.00%
Female:	12	50.00%
Gender Unknown:	0	0.00%

Race

African-American:	2	8.33%
Asian:	0	0.00%
Caucasian:	22	91.67%
Native American or AL Nat.:	0	0.00%
Nat. Hawn. or Pac. Isl.:	0	0.00%
Race Unknown:	1	4.17%

Ethnicity

Hispanic:	4	16.67%
Non-Hispanic:	17	70.83%
Ethnicity Unknown:	3	12.50%

Most Recently Identified Permanency Goals

ADOPBYFOSTPARNT	7	29.17%
ADOPBYUNRELATED	2	8.33%
REUNWTHREMCRTKR	14	58.33%

Reasons for Removal

(Note: Percentages will total to more than 100% since each removal can have several reasons)

ABANDONMENT	1	4.17%
CHILD BEHAVIOR	2	8.33%

EMOTIONAL ABUSE	5	20.83%
INADEQUATEHOUSE	9	37.50%
MEDICAL NEGLECT	1	4.17%
NEGLECT	18	75.00%
PARENT INCARCER	1	4.17%
PARENTCAN'TCOPE	4	16.67%
PARENTDRUGABUSE	2	8.33%
PHYSICAL ABUSE	1	4.17%
PRNTMETHUSE	1	4.17%
SEXUAL ABUSE	1	4.17%
<u>Previously Adopted From</u>		
OTHER COUNTRY	1	4.17%
PRIVATE - NV	1	4.17%
PRVT OTHR STATE	1	4.17%
PUB OTHR STATE	1	4.17%
PUBLIC - NV	18	75.00%
RELATIVE	2	8.33%

SAMPLE

SAMPLE

Staff Name	Case ID	Case Name	Child ID	Child Name	Legal Status	Dad TPR	Mom TPR	Length of Time Since TPR (in days)	Placement	Placement Ends	Permanency Goal	Hearing Review	TPR / Relinquish	Adopted Before	TPR Petition Referral	TPR Petition Filed	TPR Hearing	Missing Parent	Dad ID	Dad Name	Mom ID	Mom Name
ARMSTRONG, JESSICA, M.	1344509	SMITH,	1502755	[REDACTED]	STCO	05-08-2012	05-08-2012	0	RU RESIDENTIAL	09-02-2012	ADUN	10-09-2012	FREE						1502111	SMITH,	1502112	HUMPHRIES,
CARSTENS, JESSICA	81443	PRATT,	242873	[REDACTED]	STCO	05-23-2006	05-23-2006	0	COMBO FF REG	10-30-2012	ADUN	05-22-2012	FREE						166154	WYNANT,	87420	PRATT,
CARSTENS, JESSICA	81443	PRATT,	167074	[REDACTED]	STCO		05-23-2006	2270	RU RESIDENTIAL	10-16-2012	ADUN	05-22-2012	FREE					Y	0		87420	PRATT,
CARSTENS, JESSICA	1269796	CAFFERO,	1344351	[REDACTED]	STCO	10-04-2011	01-12-2010	310	COMBO FF REG	11-29-2012	ADUN	05-15-2012	FREE					Y	0		1344347	CAFFERO
CARSTENS, JESSICA	1269796	CAFFERO,	1344353	[REDACTED]	STCO	10-04-2011	01-12-2010	310	COMBO FF REG	11-29-2012	ADUN	05-15-2012	FREE					Y	0		1344347	CAFFERO
CARSTENS, JESSICA	1269796	CAFFERO,	1344348	[REDACTED]	STCO	10-04-2011	01-12-2010	310	COMBO FF REG	11-28-2012	ADUN	05-15-2012	FREE					Y	0		1344347	CAFFERO
CASON, MICHAEL	1315753	STOUT,	1564456	[REDACTED]	STCO	12-10-2008	03-22-2010	871	COMBO FF REG	09-01-2012	ADFP	08-14-2012	PARTIALLY FREE				05-11-2010	Y	0		1564452	STOUT,
CASON, MICHAEL	1330760	WAITE,	1652712	[REDACTED]	STPR	03-30-2009	03-30-2009	0	INDLV H-COMBO	10-20-2012	ADUN	11-07-2012	FREE						1255446	WAITE,	1255447	WAITE,
CAVENDER, FAYE	1258113	HALL,	1821025	[REDACTED]	STCO	05-20-2011	12-21-2010	447	COMBO FF REG	11-28-2012	ADFP	04-05-2012	FREE						1272877	MATSON,	1290783	HALL,
CAVENDER, FAYE	1258113	HALL,	1290781	[REDACTED]	STCO	01-09-2012	02-27-2012	164	COMBO FF REG	11-23-2012	ADUN	04-05-2012	FREE						1289685	NICHOLSON,	1290783	HALL,
CAVENDER, FAYE	1258113	HALL,	1290777	[REDACTED]	STCO	01-09-2012	02-27-2012	164	COMBO FF REG	11-23-2012	ADUN	04-05-2012	FREE						1289685	NICHOLSON,	1290783	HALL,
CAVENDER, FAYE	1258113	HALL,	1511553	[REDACTED]	STCO	05-08-2012	05-08-2012	0	COMBO FF REG	11-23-2012	ADUN	04-05-2012	FREE						1289685	NICHOLSON,	1290783	HALL,
CAVENDER, FAYE	1334216	BUCKNER,	1806888	[REDACTED]	STCO	05-20-2011	12-21-2010	447			ADRL	08-30-2012	FREE				2010		1548976	BIDA,	1671504	BUCKNER,
CAVENDER, FAYE	1334216	BUCKNER,	1673263	[REDACTED]	STCO	05-20-2011	12-21-2010	447			ADRL	08-30-2012	FREE				2010		1548976	BIDA,	1671504	BUCKNER,
DEWITT, EDWARD	1366727	RAVENNA-BRANDT	1859642	[REDACTED]	STCO	05-20-2011	07-24-2012	16	COMBO FF REG	12-01-2012	ADUN	04-09-2012	FREE					Y	0		1829766	RAVENNA-BRAND
DEWITT, EDWARD	1366727	RAVENNA-BRANDT	1829765	[REDACTED]	STCO	05-20-2011	07-24-2012	16	COMBO FF REG	12-01-2012	ADUN	04-09-2012	FREE					Y	0		1829766	RAVENNA-BRAND
FRIEND, PHYLLIS	1315753	STOUT,	1731642	[REDACTED]	STCO	05-11-2010	03-22-2010	821	COMBO FF REG	09-01-2012	ADFP	08-14-2012	FREE				2010		1751180	GAWLIK,	1564452	STOUT,
FRIEND, PHYLLIS	1336524	OLSZEWSKI,	1831842	[REDACTED]	STCO	05-20-2011	07-24-2012	16	COMBO FF REG	12-31-2012	ADFP	09-25-2012	FREE						1374755	PETERSON,	1326282	OLSZEWSKI,
FRIEND, PHYLLIS	1338725	KOEHLER,	1699574	[REDACTED]	STCO	10-20-2009	10-20-2009	0			ADUN	12-11-2012	FREE				2009		1699569	KOEHLER,	1699570	KOEHLER,
FRIEND, PHYLLIS	1338725	KOEHLER,	1699572	[REDACTED]	STCO	10-20-2009	10-20-2009	0	RU RESIDENTIAL	10-30-2012	ADUN	12-11-2012	FREE				2009		1699569	KOEHLER,	1699570	KOEHLER,
FRIEND, PHYLLIS	1338725	KOEHLER,	1699573	[REDACTED]	STCO	02-11-2005	10-20-2009	1024			ADUN	06-12-2012	FREE				2009		1786441	PERRY,	1699570	KOEHLER,
JACKSON, LAURIE	1376591	WILLIAMS,	1918933	[REDACTED]	STPR	05-20-2011	07-24-2012	16	COMBO FF REG	10-03-2012	ADRL	05-07-2012	FREE					Y	0		1918930	WILLIAMS,
JAY, TERESE, A.	1362107	KARLBURG,	1834722	[REDACTED]	STCO	05-20-2011	07-16-2012	24	COMBO FF REG	12-31-2012	ADFP	07-16-2012	FREE						35114	KARLBURG,	1858255	GUARDADO,
KIRK, HALLIE, R.	1354237	TULLY,	1876414	[REDACTED]	STPR	05-20-2011	07-24-2012	16			ADRL	08-08-2012	FREE						1939263	DUVALL,	168364	TULLY,
KIRK, HALLIE, R.	1354237	TULLY,	1792624	[REDACTED]	STPR	10-21-2011	10-21-2011	0			ADRL	08-08-2012	FREE						1792623	MAXFIELD JR,	168364	TULLY,
NANCE, NICOLE	1251765	TYLER,	1743241	[REDACTED]	STCO	12-05-2011	12-05-2011	0	COMBO FF REG	10-20-2012	ADUN	07-20-2012	FREE						1743874	TYLER,	1261336	TYLER,
NANCE, NICOLE	1251765	TYLER,	1791843	[REDACTED]	STCO	10-21-2011	10-21-2011	0	COMBO FF REG	10-20-2012	ADUN	07-20-2012	FREE						1745874	TYLER,	1261336	TYLER,
NANCE, NICOLE	1318081	GAYLOR-KENNEY,	1307334	[REDACTED]	STCO	01-09-2012	02-27-2012	164	RU RESIDENTIAL	08-31-2012	ADUN	10-22-2012	FREE					Y	0		1307253	GAYLOR-KENNEY
NANCE, NICOLE	1372457	DECENDER,	1890827	[REDACTED]	STPR	05-20-2011	07-24-2012	16			ADRL	03-01-2012	FREE						1903419	RIGGS,	1677906	DECENDER,
O'NEILL, NANCY	1320813	BELL,	1593375	[REDACTED]	STCO	12-05-2011	12-05-2011	0	COMBO FF REG	09-07-2012	ADUN	05-14-2012	FREE						1593368	BELL,	1593366	BELL,
O'NEILL, NANCY	1320813	BELL,	1741244	[REDACTED]	STCO	12-05-2011	12-05-2011	0	COMBO FF REG	09-15-2012	ADUN	05-14-2012	FREE						1593368	BELL,	1593366	BELL,
O'NEILL, NANCY	1320813	BELL,	1593376	[REDACTED]	STCO	12-05-2011	12-05-2011	0	COMBO FF REG	09-07-2012	ADUN	05-14-2012	FREE						1593368	BELL,	1593366	BELL,
O'NEILL, NANCY	1328683	MONTES,	1851191	[REDACTED]	STCO	05-20-2011	11-28-2011	255			ADRL	09-12-2012	FREE					Y	0		1340344	MONTES,
O'NEILL, NANCY	1344000	GLOZER,	1732184	[REDACTED]	STCO	10-26-2011	11-05-2010	288	COMBO FF REG	08-15-2012	ADUN	01-10-2013	FREE						1861126	ROBINETTE,	1732179	GLOZER,

Nevada Dept of Health & Human Services	Children with Permanency Plan of Adoption	08-09-2012
Division of Child & Family Services	As of: 07-31-2012	16:40
Legend: PRRQ - Parental Rights Relinquished PRTM - Parental Rights Terminated	For: Rural	CFS766

Children Age 1 - 19 in custody:	461
Children Age 1 - 19 with legal status of PRRQ or PRTM:	81
Children with permanency goal of Adoption:	76
Children with permanency goal of Guardianship:	11
Children with permanency goal of Foster Care until 18:	9
Children with legal status of PRRQ or PRTM and permanency goal of Adoption:	34
Average months from TPR date to 07-31-2012	45

Children with Permanency Goal of Adoption Demographics:									
Age	Male	Female	Unknown	Caucasian	African American	Asian	American Indian	NHPI	Ethnicity
1 years	5	1	0	4	1	0	1	0	1
2 years	2	7	0	9	0	0	1	0	0
3 years	1	2	0	3	0	0	1	0	0
4 years	2	3	0	5	0	0	0	0	0
5 years	1	5	0	5	0	0	1	0	0
6 years	0	1	0	1	0	0	0	0	1
7 years	4	1	0	4	0	0	1	0	0
8 years	3	1	0	4	1	0	1	0	0
9 years	3	1	0	4	0	0	0	0	0
10 years	3	2	0	5	0	0	1	0	0
11 years	2	1	0	2	0	0	1	0	0
12 years	3	5	0	8	1	0	0	0	0
13 years	3	1	0	4	0	0	1	0	0
14 years	3	2	0	5	0	0	1	0	0
15 years	1	1	0	2	0	0	0	0	0

16 years	2	0	0	2	0	0	0	0	1
17 years	2	2	0	2	2	0	0	1	0

Client Number	Client Name	Gender	Date of Birth	Ethnicity Type Code	Hisp	African American	American Indian	Asian	Caucasian	NHPI	Perm Goal Code	Number of Months from TPR da
167074	MICHAEL, L.	M	11-10-1994	NONH					Y		ADUN	93
213295	HANNAH, D.	F	11-15-1995	NONH			Y		Y			0
242873	DANIEL, W.	M	08-30-1997	NONH					Y		ADUN	93
272795	AMILYNN, M.	F	05-19-1998	NONH					Y			51
310650	WESLEY, J.	M	10-07-1998	NONH					Y			0
1251971	ARIA	F	05-30-1999	NONH			Y		Y		ADUN	0
1256114	RICHERD, A.	M	02-24-1997	NONH					Y		GBRL	0
1258217	RACHELLE, L.	F	01-26-1998	NONH					Y		ADFP	40
1258218	JAMES, L.	M	06-10-1999	NONH					Y		ADFP	40
1258220	KEITH, R.	M	06-15-2000	NONH					Y		ADFP	40
1262320	ANGEL, N.	F	08-30-1993	NONH					Y			0
1263124	MICHELLE	F	07-13-1998	NONH					Y			0
1264800	TAYLOR	F	06-21-1995	NONH					Y			0
1266175	JOSEPH, M.	M	08-14-1994	NONH					Y			0
1266440	JORDAN, A.	M	05-18-1998	NONH					Y			111
1268167	MICHAEL, G.	M	10-11-2000	NONH					Y			47
1270234	JESSIE, G.	M	03-26-1994	NONH					Y			91
1271084	CHRISTIAN, K.	F	07-23-1995	NONH					Y		GRDS	0
1271085	DANTE, V.	M	02-21-2000	NONH					Y		ADUN	47
1272135	CORDELL	M	07-04-1998	NONH					Y			0
1272137	LORYN	F	09-16-1999	NONH					Y			0
1273460	NAOMI	F	09-14-1995	UNAB					Y			0
1273462	ROBYN	F	01-04-1998	UNAB					Y			0
1273737	JESSICA	F	03-28-1996	NONH					Y			0

Custody 14 of 21 Months

From: 10-01-2010 To: 07-31-2012

For: Rural

08-10-2012

09:36:33

CFS7B3

Placement Type	Total	Status of Parental Rights			Total	Status of Petition to TPR			Total
Nbr of Children in Parental Placements:	84	Nbr of Children in which Both Parental Rights Not Terminated:			226	Nbr of Children with a TPR Petition Filed Between 14 and 21 Months:			1
Out of Home Placement Total:	345	Nbr of Children in which Both Parents Rights Terminated:			113	Nbr of Children placed Out of Home over 14 months without a TPR Petition Filed:			344
		Nbr of Children who were Adopted:			39	Nbr of Children placed Out of Home over 21 Months Without a TPR Petition Filed:			1
Court	Nbr of Children in Out of Home	Nbr of Children in which Both Parental Rights are Not Terminated	Nbr of Children in which Both Parental Rights have been Terminated	Nbr of Children with a Petition to TPR Filed between 14 & 21 Months	Average Months from Date of First Removal to either Relinquishment, Adoption or Guardianship	Nbr of Children who have been Adopted	Average Months from Removal to Adoption	Nbr of Children who have a Finalized Guardianship	Average Months from Removal to Finalized Guardianship
COURT JURISDICTION NOT IDENTIFIED	11	11	0	0		0		0	
EIGHTH JUDICIAL DISTRICT, CLARK	6	5	1	0	26.13	1	63.50	0	
FIFTH JUDICIAL DISTRICT, MINERAL	13	10	3	0	37.59	1	54.33	0	
FIFTH JUDICIAL DISTRICT, NYE	73	48	25	0	29.24	9	48.09	0	
FIRST JUDICIAL DISTRICT, CARSON CITY	45	39	6	0	24.29	4	30.23	0	
FOURTH JUDICIAL DISTRICT, ELKO	36	23	10	0	26.02	3	23.63	3	18.33
NINTH JUDICIAL DISTRICT, DOUGLAS	14	13	1	0	15.50	1	24.80	0	
SECOND JUDICIAL DISTRICT, WASHOE	3	0	3	0	33.97	0		0	
SEVENTH JUDICIAL DISTRICT, EUREKA	2	2	0	0		0		0	
SEVENTH JUDICIAL DISTRICT, LINCOLN	1	0	1	0	11.17	0		0	
SEVENTH JUDICIAL DISTRICT, WHITE PINE	26	23	3	0	19.63	1	18.57	0	
SIXTH JUDICIAL DISTRICT, HUMBOLDT	29	15	13	0	32.76	6	48.71	1	47.77
SIXTH JUDICIAL DISTRICT, LANDER	12	0	12	0	32.36	1	43.30	0	
SIXTH JUDICIAL DISTRICT, PERSHING	8	3	5	0	20.52	0		0	
THIRD JUDICIAL DISTRICT, CHURCHILL	27	20	5	0	31.59	3	31.97	2	20.03
THIRD JUDICIAL DISTRICT, LYON	39	14	25	1	33.98	9	47.26	0	
TOTAL	345	226	113	1	29.98	39	42.12	6	23.81

**CPS Investigation/Assessment Summary
for Referrals Rcvd by Rural - RURAL REGION AREA 1
Including: Invstgtns / Agency Assmnts /
Non-Agency Assmnts / Institutional Invstgtns
From: 07-01-2012 To:07-31-2012**

08-10-2012

Division of Child & Family Services

20:16:42

RURAL REGION AREA 1

CFS770

Summary

Total Investigations: 44 Substnd: 2 4.55 %

Total Agency Assessments: 0

Total Non-Agency Assessments: 0

Total Institutional Investigations: 0 Substnd: 0

Grand Totals: 44

Investigations

Organization	Total	Average Days	Substantiated
INVESTIGATIONS TTL	44	13.57	4.55 %
RURAL REGION AREA 1	44	13.57	4.55 %
BATTLE MTN DO	2	None Closed	0.00 %
BATTLE MTN I	2	None Closed	0.00 %
SCHONEWEIS, LAURA, A.	2	None Closed	0.00 %
ELKO DO	27	8.00	0.00 %
ELKO 2	1	None Closed	0.00 %
CICHON, JEROLYN	1	None Closed	0.00 %

ELKO 3	26	8.00	0.00 %
DONOHUE, SARAH	6	8.00	0.00 %
KING, SHIRLEY	7	None Closed	0.00 %
SHEETS, PAMELA, K.	8	8.00	0.00 %
TURNER, ALISHA	5	None Closed	0.00 %
ELY DO	11	27.50	9.09 %
ELY I	11	27.50	9.09 %
CAVENDER, FAYE	2	33.00	50.00 %
HOLBROOK, BRANDY	5	22.00	0.00 %
REBIEJO, SHANNON	4	None Closed	0.00 %
WINNEMUCCA DO	4	8.00	25.00 %
WINNEMUCCA I	4	8.00	25.00 %
JONES, JANECE	1	8.00	100.00 %
MAGANA, WHITNEY	3	None Closed	0.00 %

Agency Assessments

Organization	Total	Average Days	
AGNCY ASSMNT TTL	0	None Closed	

Non-Agency Assessments

Organization	Total	Average Days	
NON-AGNCY ASSMNT TTL	0	None Closed	

Institutional Investigations

Organization	Total	Average Days	Substantiated
--------------	-------	--------------	---------------