

DIVISION OF CHILD AND FAMILY SERVICES DESCRIPTIVE SUMMARY OF MENTAL HEALTH SERVICES FY 08

Nevada children’s mental health services in philosophy and in practice are based upon System of Care values and principles. System of Care incorporates a comprehensive spectrum of mental health and other necessary services for children with emotional and behavioral disorders. These services are organized into a coordinated network to meet the multiple and changing needs of children and their families. Services offered under System of Care need be responsive to the cultural context and characteristics of the populations they serve. It is imperative that DCFS know the children and families for whom it cares.

The following is the descriptive summary of the children who were served by the Division of Child and Family Services (DCFS) Children’s Mental Health Services in Fiscal Year 2008 from July 1, 2007 through June 30, 2008. The FY 2008 Descriptive Study provides an expanded analysis of DCFS programs. Prior Descriptive Studies have utilized admission data only. This FY 2008 report examines served data statewide and by programs. Children served are those that received a service sometime during the fiscal year. This report provides descriptive information on each DCFS Children’s Mental Health Services’ program for the first time (for a listing of each program see the table below). The Child and Adolescent Functional Assessment Scale (CAFAS) and the Preschool and Early Childhood Functional Assessment Scale (PECFAS) (Hodges, 2005) subscale scores were examined at admission and at 3-months for residential program areas and at admission and at 6-months for community-based program areas. The CAFAS and the PECFAS are used as clinical tools that assess individuals’ progress and as pre-post outcome measures for program evaluation. The pre-post analysis of the CAFAS and PECAFAS subscale scores is a new addition to the Descriptive Study.

This descriptive report summarizes the demographic and clinical characteristics of the 3108 children served for mental health services across the state of Nevada in DCFS Children’s Mental Health programs. DCFS Children’s Mental Health programs are divided into Southern Nevada Child and Adolescent Services (SNCAS) with locations in southern Nevada and Northern Nevada Child and Adolescent Services (NNCAS) with locations in northern Nevada which includes the Wraparound in Nevada program serving the rural region. Programs are outlined in the table below.

SNCAS	NNCAS
<i>Community-Based Services</i>	
Children’s Clinical Services	Outpatient Services
Early Childhood Mental Health Services	Early Childhood Treatment Services
Wraparound in Nevada	Wraparound in Nevada
Pharmacy Services	Pharmacy Services
<i>Treatment Homes</i>	
Oasis On-Campus Treatment Homes	Adolescent Treatment Center
	Family Learning Homes
<i>Residential Facility and Psychiatric Hospital</i>	
Desert Willow Treatment Center	

CHILDREN'S MENTAL HEALTH

Number of Children Served by Regional Program

SNCAS: There were 2169 children served in FY08 in the southern region accounting for 69.8 percent of children served statewide.

NNCAS: There were 824 children served in FY08 in the northern region accounting for 26.5% of children served statewide. The Wraparound in Nevada program serving the rural region is managed and supervised by NNCAS. There were 115 children served in the rural region accounting for 3.7% of the total served statewide.

Admissions

During FY 08 there were 1646 children admitted to DCFS programs, 1205 (73.2%) were admitted to SNCAS (Clark County), 386 (23.5%) were admitted to NNCAS (Washoe County), and 55 (3.3%) were admitted to the Wraparound in Nevada program serving the rural region.

CHILDREN'S DEMOGRAPHIC CHARACTERISTICS

Statewide and by Regional Program

The 3108 children served statewide for mental health services in FY 08 reflected the following demographic characteristics. Demographics on the Wraparound in Nevada program that serves the rural region will be included in the individual program section.

Age

The age of children ranged from .27 years of age through 21.38 years of age. The mean age of all children served in FY08 was 10.95 years old. The following is the percent of children served by age group. **Statewide:** Of the 3108 children served the percent by age group were:

- 0-5 year old: 24.1%
- 6-12 year old: 33.9%
- 13-18 year old: 40.3%
- 19-22 year old: 1.6%

SNCAS: Of the 2169 children served the percent by age group were:

- 0-5 year old: 27.8%
- 6-12 year old: 31.6%
- 13-18 year old: 38.7%
- 19-22 year old: 1.9%

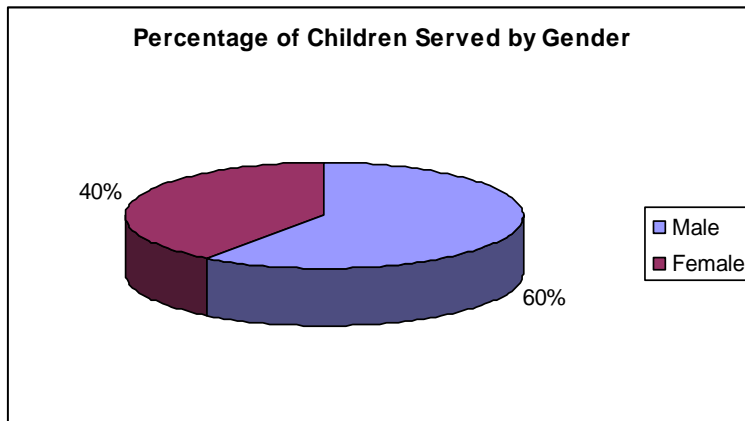
NNCAS: Of the 824 children served the percent of admissions by age group were:

- 0-5 year old: 17.6%
- 6-12 year old: 39%
- 13-18 year old: 42.4%
- 19-22 year old: 1.1%

Gender

Males accounted for 59.9% of the statewide numbers served and females the remaining 40.1%. Regional program breakdown of the gender of children and youth admitted to DCFS mental health services is as follows:

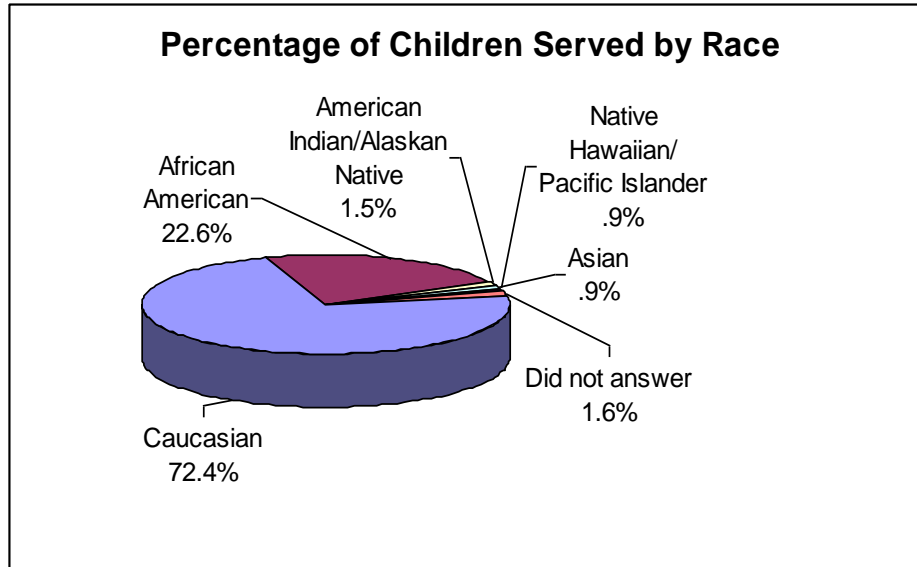
- SNCAS: Males served were 60.6% and 39.4% were females
- NNCAS: Males served were 59.7% and 40.3% were females



Race

Statewide:

- Caucasians made up the majority of statewide numbers served accounting for 72.4% (2250) of children
- African-Americans accounted for 22.6% (702) of children
- American Indian/Alaskan Natives accounted for 1.5% (48) of children
- Asians accounted for .9% (29) of children
- Native Hawaiian/ Pacific Islanders accounted for .9% (28) of children
- Declined/No entry/No one to ID 1.6% (51) of children



SNCAS:

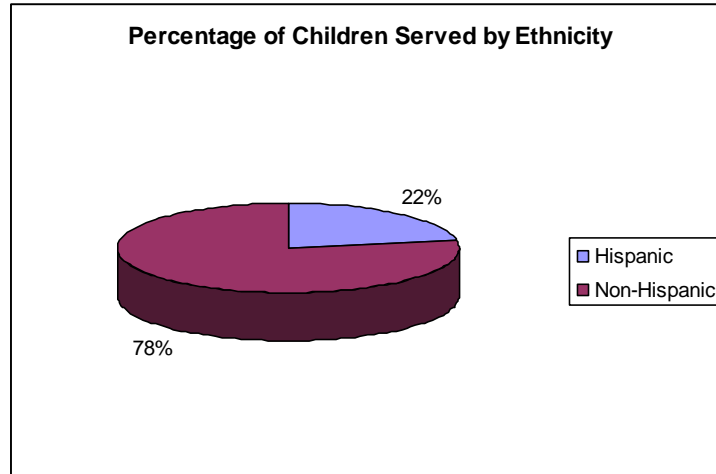
- Caucasians made up the majority of statewide numbers served accounting for 66.2% (1435) of children
- African-Americans accounted for 28.9% (626) of children
- American Indian/Alaskan Natives accounted for 1.3% (28) of children
- Native Hawaiian/ Pacific Islanders accounted for 1% (21) of children
- Asians accounted for .9% (20) of children
- Declined/No entry/No one to ID 1.8% (39) of children

NNCAS:

- Caucasians made up the majority of statewide numbers served accounting for 86.3% (711) of children
- African-Americans accounted for 9.2% (76) of children
- American Indian/Alaskan Natives accounted for 1.7% (14) of children
- Asians accounted for 1% (8) of children
- Native Hawaiian/ Pacific Islanders accounted for .8% (7) of children
- Declined/No entry/No one to ID 1% (8) of children

Ethnic Origin

Children of Hispanic origin accounted for 22.4% (696) of those served by DCFS mental health services statewide. A regional program breakdown of ethnicity of children reveals that at SNCAS 23.9% (518) of children served were Hispanic and at NNCAS had 20.1% (166).



Custody Status

More than half (57%) of the children served in DCFS mental health services statewide in FY08 were in the custody of their parent or family, 28.3% were in Child Welfare custody, .7% were in Youth Parole custody and 2.4% were in “Other” custody status.

A breakdown of the custody status of the children served statewide and by regional program is as follows:

Custody Type	Statewide (3108)	SNCAS (2169)	NNCAS (824)
Parent/Family	57% (1771)	51.9% (1126)	77.3% (637)
Child Welfare	28.3% (880)	36.6% (793)	10.4% (86)
Youth Parole	.7% (23)	.9% (20)	.4% (3)
Other	2.4% (74)	2.1% (46)	3.4% (28)
Missing	11.6% (360)*	8.5% (184)	8.5% (70)

*The Wraparound in Nevada program is converting to the Avatar management information system and legal custody has not been entered which accounts for much of the missing data reported in this table. In the individual program section, the Wraparound in Nevada program custody status data was obtained from the UNITY database.

Demographics by Program

Community-Based Services

Children's Clinical Services (SNCAS)

Children's Clinical Services served a total of 901 children.

The average age of children was 13.31 years with an age range of 5.79 to 21.38 years. The following is the percent of children served by age group.

- 0-5 year old: .2%
- 6-12 year old: 44.2%
- 13-18 year old: 54.4%
- 19-22 year old: 1.2%

Males accounted for 62.9% of children served in Children's Clinical Services and females accounted for 37.1%.

The following is the percent and number of children served by race and ethnicity in Children's Clinical Services.

- Caucasians made up the majority of children served accounting for 71.5% (644)
- African-Americans accounted for 24.9% (224) of children
- American Indian/Alaskan Natives accounted for 1.3% (12) of children
- Native Hawaiian/ Pacific Islanders accounted for 1.2% (11) of children
- Asians accounted for 0.4% (4) of children
- Declined/No one to ID/No entry accounted for 0.7% (6) of children
- Hispanic Origin accounted for 26.1% (235) of children

The following is the percent and number by custody status of children served in Children's Clinical Services.

- Parent/Family - 64.4% (580)
- Child Welfare – 31.2% (281)
- Youth Parole - .2% (2)
- Other – 2.7% (24)
- Missing – 1.6% (14)

Outpatient Services (NNCAS)

Outpatient Services served a total of 385 children.

The average age of children was 14.34 years with an age range of 6.68 to 19.64 years. The following is the percent of children served by age group.

- 0-5 year old: 0%
- 6-12 year old: 33.2%
- 13-18 year old: 65.5%
- 19-22 year old: 1.3%

Males accounted for 60.3% of children served in Outpatient Services and females accounted for 39.7%.

The following is the percent and number of children served by race and ethnicity in Outpatient Services.

- Caucasians made up the majority of children served accounting for 87.3% (336)
- African-Americans accounted for 9.1% (35) of children
- Native Hawaiian/ Pacific Islanders accounted for 1.3% (5) of children
- Asians accounted for 1.3% (5) of children
- American Indian/Alaskan Natives accounted for 1% (4) of children
- Hispanic Origin accounted for 20.8% (80) of children

The following is the percent and number by custody status of children served in Outpatient Services.

- Parent/Family - 88.1% (339)
- Child Welfare – 7.5% (29)
- Youth Parole - .8% (3)
- Other – 3.4% (13)
- Missing – 1.6% (14)

Early Childhood Mental Health Services (SNCAS)

Early Childhood Mental Health Services served a total of 700 children.

The average age of children was 4.25 years with an age range of .27 to 8.50 years. The following is the percent of children served by age group.

- 0-5 year old: 82.0%
- 6-12 year old: 18.0%
- 13-18 year old: 0%
- 19-22 year old: 0%

Males accounted for 60.7% of children served in Early Childhood Mental Health Services and females accounted for 39.3%.

The following is the percent and number of children served by race in Early Childhood Mental Health Services.

- Caucasians made up the majority of children served accounting for 66% (462)
- African-Americans accounted for 29.4% (206) of children

- Asians accounted for 1.6% (11) of children
- American Indian/Alaskan Natives accounted for 1.3% (9) of children
- Native Hawaiian/ Pacific Islanders accounted for .9% (6) of children
- Declined/No one to ID/No entry accounted for 0.9% (6) of children
- Hispanic Origin accounted for 27.9% (195) of children

The following is the percent and number by custody status of children served in Early Childhood Mental Health Services.

- Parent/Family - 49.7% (348)
- Child Welfare – 47.9% (335)
- Other – 1% (7)
- Missing – 1.4% (10)

Early Childhood Treatment (NNCAS)

Early Childhood Treatment served a total of 311 children.

The average age of children was 6.50 years with an age range of 2.30 to 12.12 years. The following is the percent of children served by age group.

- 0-5 year old: 43.7%
- 6-12 year old: 56.3%
- 13-18 year old: 0%
- 19-22 year old: 0%

Males accounted for 60.5% of children served in Early Childhood Treatment and females accounted for 39.5%.

The following is the percent and number of children served by race and ethnicity in Early Childhood Treatment.

- Caucasians made up the majority of children served accounting for 85.2% (265)
- African-Americans accounted for 10.6% (33) of children
- American Indian/Alaskan Natives accounted for 2.9% (9) of children
- Asians accounted for 1% (3) of children
- Native Hawaiian/ Pacific Islanders accounted for .3% (1) of children
- Hispanic Origin accounted for 20.9% (65) of children

The following is the percent and number by custody status of children served in Early Childhood Treatment.

- Parent/Family - 87.1% (271)
- Child Welfare – 9% (28)
- Other – 3.9% (12)

Wraparound in Nevada (SNCAS)

Wraparound in Nevada-SNCAS served a total of 519 children.

The average age of children was 13.92 years with an age range of 5.48 to 21.36 years. The following is the percent of children served by age group.

- 0-5 year old: .6%
- 6-12 year old: 40.3%
- 13-18 year old: 53.2%
- 19-22 year old: 6.0%

Males accounted for 58.2% served in the Wraparound in Nevada-SNCAS and females accounted for 41.8%.

The following is the percent and number of children served by race and ethnicity in the Wraparound in Nevada-SNCAS program.

- Caucasians made up the majority of children served accounting for 49.7% (258)
- African-Americans accounted for 43.5% (226) of children
- American Indian/Alaskan Natives accounted for 1.2% (6) of children
- Native Hawaiian/ Pacific Islanders accounted for .4% (2) of children
- Asians accounted for .4% (2) of children
- Declined/No one to ID/No entry accounted for 4.8% (25) of children
- Hispanic Origin accounted for 10.6% (55) of children

The following is the percent and number by custody status of children served in the Wraparound in Nevada-SNCAS program.

- Parent/Family - 4.2% (22)
- Child Welfare – 92.9% (482)
- Youth Parole – 1% (5)
- Missing – 1.9% (10)

Wraparound in Nevada (NNCAS)

Wraparound in Nevada-NNCAS served a total of 165 children.

The average age of children was 15.04 years with an age range of 7.06 to 20.34 years. The following is the percent of children served by age group.

- 0-5 year old: 0%
- 6-12 year old: 25.5%
- 13-18 year old: 71.5%
- 19-22 year old: 3.0%

Males accounted for 60% served in the Wraparound in Nevada-NNCAS program and females accounted for 40%.

The following is the percent and number of children served by race and ethnicity in the Wraparound in Nevada-NNCAS program.

- Caucasians made up the majority of children served accounting for 86.1% (142)

- African-Americans accounted for 7.3% (12) of children
- American Indian/Alaskan Natives accounted for .6% (1) of children
- Native Hawaiian/ Pacific Islanders accounted for .6% (1) of children
- Asians accounted for .6% (1) of children
- Declined/No one to ID/No entry accounted for 4.8% (8) of children
- Hispanic Origin accounted for 16.4% (27) of children

The following is the percent and number by custody status of children served in the Wraparound in Nevada-NNCAS program.

- Parent/Family - 1.2% (2)
- Child Welfare – 93.3% (154)
- Youth Parole – 1.2% (2)
- Missing – 4.2% (7)

Wraparound in Nevada serving the Rural Region

Wraparound in Nevada in the rural region served a total of 115 children.

The average age of children was 13.60 years with an age range of 5.49 to 19.95 years. The following is the percent of children served by age group.

- 0-5 year old: .9%
- 6-12 year old: 42.6%
- 13-18 year old: 55.70%
- 19-22 year old: .9%

Females accounted for 50.4% served in the Wraparound in Nevada program in the rural region and females accounted for 49.6%.

The following is the percent and number of children served by race and ethnicity in the Wraparound in Nevada program in the rural region.

- Caucasians made up the majority of children served accounting for 90.4% (104)
- American Indian/Alaskan Natives accounted for 5.2% (6) of children
- Asians accounted for .9% (1) of children
- Declined/No one to ID/No entry accounted for 3.5% (4) of children
- Hispanic Origin accounted for 10.4% (12) of children

The following is the percent and number by custody status of children served in the Wraparound in Nevada program in the rural region.

- Parent/Family - 13.3%
- Child Welfare – 76.6%
- Youth Parole - .8%
- Missing – 9.4%

Pharmacy (SNCAS)

The SNCAS Pharmacy program served a total of 357 children.

The average age of children was 14.83 years with an age range of 6.99 to 19.73 years. The following is the percent of children served by age group.

- 0-5 year old: 0%
- 6-12 year old: 24.4%
- 13-18 year old: 75.1%
- 19-22 year old: .6%

Males accounted for 61.1% served in the SNCAS pharmacy program and females accounted for 38.9%.

The following is the percent and number of children served by race and ethnicity in the SNCAS pharmacy program.

- Caucasians made up the majority of children served accounting for 72% (257)
- African-Americans accounted for 23.5% (84) of children
- American Indian/Alaskan Natives accounted for 2% (7) of children
- Native Hawaiian/ Pacific Islanders accounted for 1.1% (4) of children
- Asians accounted for .6% (2) of children
- Declined/No one to ID/No entry accounted for .8% (3) of children
- Hispanic Origin accounted for 21.8% (78) of children

The following is the percent and number by custody status of children served in the SNCAS pharmacy program.

- Parent/Family - 79.3% (283)
- Child Welfare – 12.6% (45)
- Youth Parole – 5.9% (21)
- Other – 2.2% (8)

Pharmacy (NNCAS)

The NNCAS Pharmacy program served a total of 55 children.

The average age of children was 15.76 years with an age range from 13.15 to 18.57 years. The following is the percent of children served by age group.

- 0-5 year old: 0%
- 6-12 year old: 0%
- 13-18 year old: 100%
- 19-22 year old: 0%

Females accounted for 54.5% served in the NNCAS pharmacy program and males accounted for 45.5%.

The following is the percent and number of children served by race and ethnicity in the pharmacy program in the northern region.

- Caucasians made up the majority of children served accounting for 92.7% (51)

- African-Americans accounted for 3.6% (2) of children
- American Indian/Alaskan Natives accounted for 3.6% (2) of children
- Hispanic Origin accounted for 27.3% (15) of children

The following is the percent and number by custody status of children served in NNCAS pharmacy program.

- Parent/Family - 80% (44)
- Child Welfare – 10.9% (6)
- Other – 7.3% (4)
- Missing – 1.8% (1)

Treatment Homes

On-Campus Treatment Homes (SNCAS)

The On-Campus Treatment Homes served a total of 73 children.

The average age of children was 13.69 years with an age range of 7.39 to 18.36 years. The following is the percent of children served by age group.

- 0-5 year old: 0%
- 6-12 year old: 37.0%
- 13-18 year old: 63.0%
- 19-22 year old: 0%

Males accounted for 56.2% served in the Oasis On-Campus Treatment Homes and females accounted for 43.8%.

The following is the percent and number of children served by race and ethnicity in the Oasis On-Campus Treatment Homes.

- Caucasians made up the majority of children served accounting for 56.2% (41)
- African-Americans accounted for 43.8% (32) of children
- Hispanic Origin accounted for 8.2% (6) of children

The following is the percent and number by custody status of children served in the Oasis On-Campus Treatment Homes.

- Parent/Family - 52.1% (38)
- Child Welfare – 34.2% (25)
- Youth Parole – 2.7% (2)
- Other – 5.5% (4)
- Missing – 5.5% (4)

Adolescent Treatment Center (NNCAS)

The Adolescent Treatment Center served a total of 58 children.

The average age of children was 15.74 years with an age range of 13.15 to 18.57 years. The following is the percent of children served by age group.

- 0-5 year old: 0%
- 6-12 year old: 0%
- 13-18 year old: 100%
- 19-22 year old: 0%

Females accounted for 55.2% served in the Adolescent Treatment Center and males accounted for 44.8%.

The following is the percent and number of children served by race and ethnicity in the Adolescent Treatment Center.

- Caucasians made up the majority of children served accounting for 93.1% (54)
- African-Americans accounted for 3.4% (2) of children
- American Indian/Alaskan Natives accounted for 3.4% (2) of children
- Hispanic Origin accounted for 29.3% (17) of children

The following is the percent and number by custody status of children served in the Adolescent Treatment Center

- Parent/Family - 79.3% (46)
- Child Welfare – 12.1% (7)
- Other – 6.9% (4)
- Missing – 1.7% (1)

Family Learning Homes

The Family Learning Homes served a total of 61 children.

The average age of children was 14.0 years with an age range of 6.11 to 18.89 years. The following is the percent of children served by age group.

- 0-5 year old: 0%
- 6-12 year old: 34.4%
- 13-18 year old: 65.6%
- 19-22 year old: 0%

Males accounted for 59% served in the Family Learning Homes and females accounted for 41%.

The following is the percent and number of children served by race and ethnicity in the Family Learning Homes.

- Caucasians made up the majority of children served accounting for 90.2% (55)
- African-Americans accounted for 6.6% (4) of children
- American Indian/Alaskan Natives accounted for 1.6% (1) of children
- Native Hawaiian/ Pacific Islanders accounted for 1.6% (1) of children
- Hispanic Origin accounted for 26.2% (16) of children

The following is the percent and number by custody status of children served in the Family Learning Homes.

- Parent/Family - 85.2% (52)
- Child Welfare – 9.8% (6)
- Youth Parole – 3.3% (2)
- Other – 1.6% (1)

Residential Facility and Psychiatric Hospital

Desert Willow Treatment Center (SNCAS)

Desert Willow Treatment Center Acute Hospital served a total of 183 children. The Residential Treatment Center served a total of 107 children.

The average age of children served by the Acute Hospital was 14.43 years with an age range of 6.99 to 18.72 years. The average age of children served by the Residential Treatment Center was 16.14 years with an age range of 12.36 to 18.89 years. The following is the percent of children served by age group.

Acute Hospital:

- 0-5 year old: 0%
- 6-12 year old: 30.1%
- 13-18 year old: 69.9%
- 19-22 year old: 0%

Males accounted for 55.7% served in the DWTC Acute Hospital and females accounted for 44.3%.

The following is the percent and number of children served by race and ethnicity in the DWTC Acute Hospital.

- Caucasians made up the majority of children served accounting for 69.9% (128)
- African-Americans accounted for 25.1% (46) of children
- American Indian/Alaskan Natives accounted for 2.2% (4) of children
- Native Hawaiian/ Pacific Islanders accounted for 1.1% (2) of children
- Asians accounted for 1.1% (2) of children
- Declined/No one to ID/No entry accounted for .5% (1) of children
- Hispanic Origin accounted for 23.5% (43) of children

The following is the percent and number by custody status of children served in DWTC Acute Hospital.

- Parent/Family - 82% (150)
- Child Welfare – 13.7% (25)
- Youth Parole – 2.7% (5)
- Other – 1.6% (3)

Residential Treatment Center:

- 0-5 year old: 0%
- 6-12 year old: 2.8%
- 13-18 year old: 97.2%
- 19-22 year old: 0%

Males accounted for 63.6% served in the Desert Willow Residential Treatment Center and females accounted for 36.4%.

The following is the percent and number of children served by race and ethnicity in the Desert Willow Residential Treatment Center.

- Caucasians made up the majority of children served accounting for 72.9% (78)
- African-Americans accounted for 22.4% (24) of children
- Native Hawaiian/ Pacific Islanders accounted for 2.8% (3) of children
- American Indian/Alaskan Natives accounted for 1.9% (2) of children
- Hispanic Origin accounted for 20.6% (22) of children

The following is the percent and number by custody status of children served in the Desert Willow Residential Treatment Center.

- Parent/Family - 69.2% (74)
- Child Welfare – 14% (15)
- Youth Parole - 14% (15)
- Other – 2.8% (3)

Children served by program are an unduplicated count within each program. It is a duplicated count across programs as many children receive services from more than one DCFS Children's Mental Health program.

CHILDREN'S CLINICAL CHARACTERISTICS

Presenting Problems at Admission

At admission, parents and caregivers are asked to identify problems their child has encountered. Of the 51 problems listed, the four problems identified below accounted for over one-third (36.7%) of all problems reported.

- Adjustment Problems (13.6%)
- Child Neglect Victim (9.9%)
- Physical Aggression (6.7%)
- Parent-Child Problems (6.5%)

When analyzed by region, the most frequent admitting problem was Adjustment Problems. The second most frequent admitting problem was Child Neglect Victim at SNCAS and Physical Aggression at NNCAS. Physical Aggression and Parent-Child Problems are tied as the third most frequently reported problem at SNCAS while Parent-Child Problems was the third most frequently reported problem at NNCAS.

Child and Adolescent Functional Assessment

The Child and Adolescent Functional Assessment Scale (CAFAS) (Hodges, 2005) was designed to assess in children ages 6 to 18 years the degree of functional impairment regarding emotional, behavioral, psychiatric, psychological and substance-use problems. CAFAS scores can range from 0 to 240 with higher scores reflecting increased impairment in functioning.

The CAFAS and the Preschool and Early Childhood Functional Assessment Scale (PECFAS) are standardized instruments commonly used across child-serving agencies to guide treatment planning and as a clinical outcome measures for individual clients and program evaluation (Hodges, 2005). The CAFAS and the PECFAS are the primary outcome measures for DCFS Children's Mental Health.

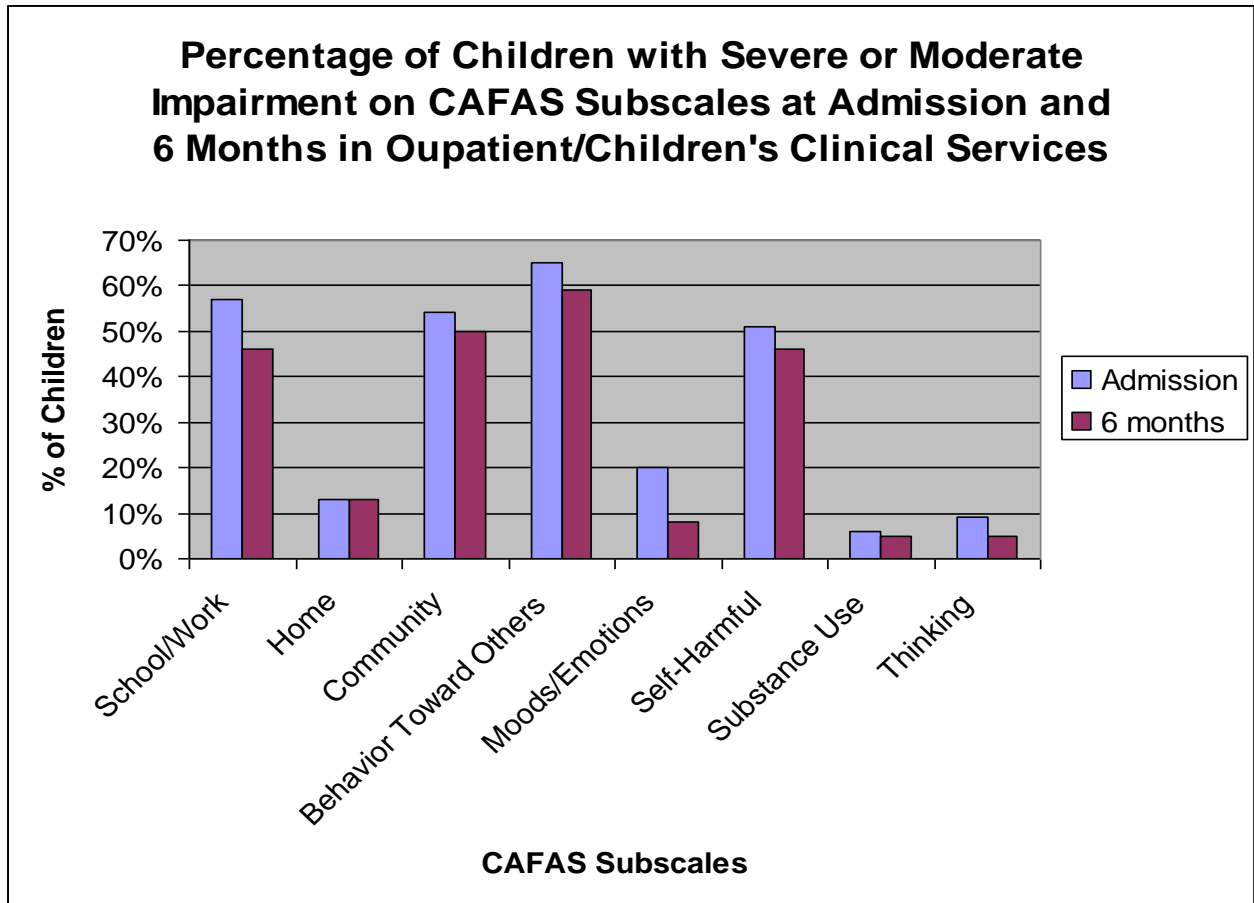
Children ages 6 through 18+ that entered DCFS Children's Mental Health programs in FY 08 had a mean total CAFAS score of 98.77 at admission. The FY 07 mean CAFAS total score at admission was 106.25 and for FY 06 it was 109. This reflects a three year decline in admission CAFAS scores although children admitted to mental health services at intake remain impaired in their overall functioning.

Outpatient and Children's Clinical Services

Outpatient Services at NNCAS and Children's Clinical Services at SNCAS had a total of 462 admission CAFAS scores. The average total CAFAS admission score was 87.92 with a range of 10 to 230.

Outpatient Services at NNCAS and Children's Clinical Services at SNCAS were combined to examine CAFAS subscale scores at admission and at 6 months for children served in FY08. There were a total of 276 pairs of CAFAS subscale scores. The graph below reflects the

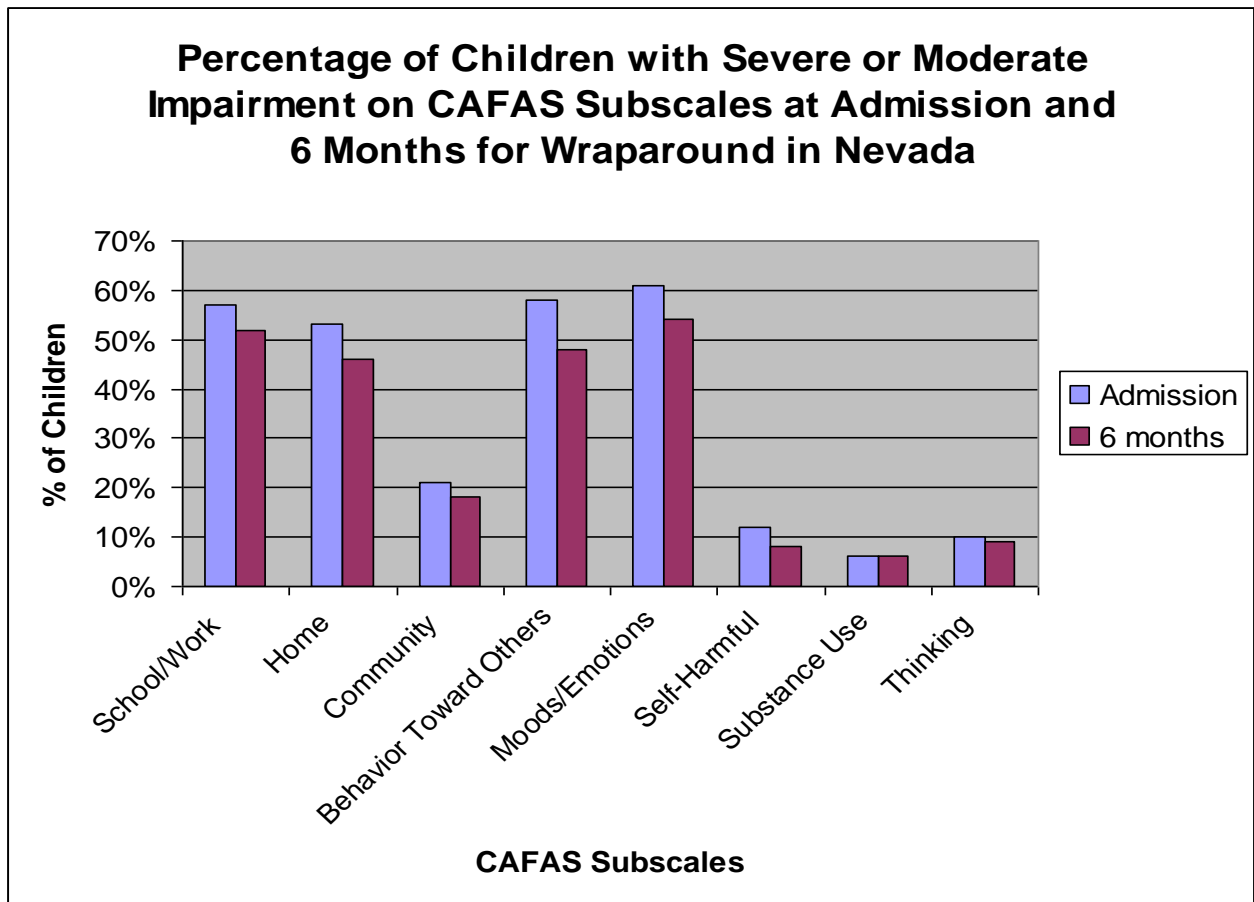
percentage of children who received a score of 20 (moderate impairment) or 30 (severe impairment) on the CAFAS subscales at admission and at 6 months. CAFAS subscale scores decreased from admission to 6 months indicating improvement in functioning with the exception of the Home subscale which showed no change. It will be interesting to see if a planned follow-up Home scale analysis contrasting these 6 month scores to admission scores shows response movement away from the more severe impairment category.



Wraparound in Nevada

Statewide, the Wraparound in Nevada program had a total of 326 admission CAFAS scores. The average total CAFAS admission score was 78.10 with a range of 0 to 190.

Statewide, the Wraparound in Nevada CAFAS subscale scores were combined for examination at admission and at 6 months for children served in FY08. There were a total of 444 pairs of CAFAS subscale scores. The graph below reflects the percentage of children who received a score of 20 (moderate impairment) or 30 (severe impairment) on CAFAS subscales at admission and at 6 months. CAFAS subscale scores decreased from admission to 6 months indicating improvement in functioning with the exception of the Substance Abuse subscale which showed no change. Later analysis of this subscale may highlight what if any changes there may have been relative to early stage addiction problems versus late stage/severe addiction problems.

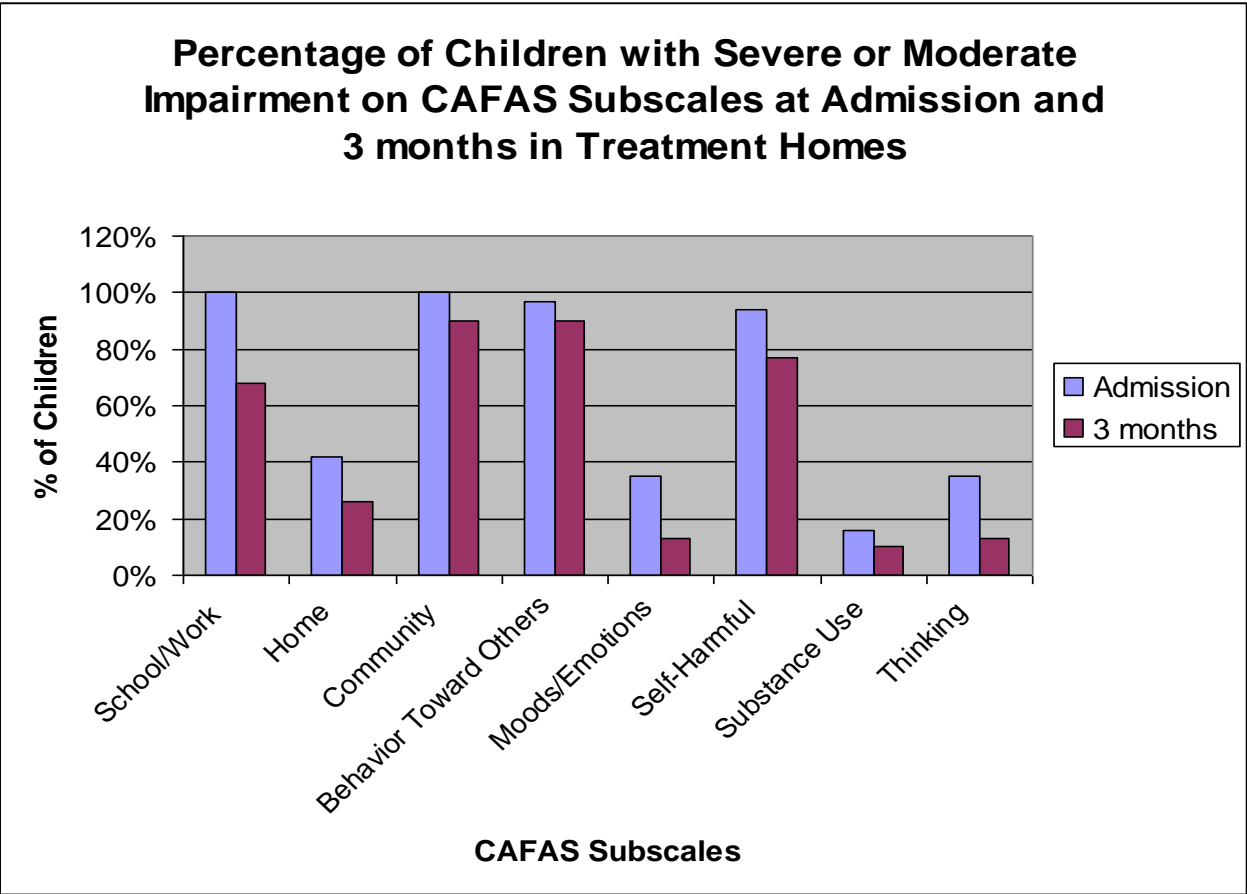


Treatment Homes

The Adolescent Treatment Center and the Family Learning Homes at NNCAS and Oasis On-Campus Treatment Homes at SNCAS had a total of 65 admission CAFAS scores. The average total CAFAS admission score was 137.38 with a range of 90 to 190.

Oasis On-Campus Treatment Homes, the Adolescent Treatment Center, and the Family Learning Homes CAFAS subscale scores were combined for examination at admission and at 3 months for children served in FY08. Three month subscales scores were selected due to the shorter length of stay for children served in treatment homes. There were a total of 31 pairs of CAFAS subscale scores. The graph below reflects the percentage of children who received a score of 20 (moderate impairment) or 30 (severe impairment) on CAFAS subscales at admission and at 3 months. All 3 month subscale scores decreased from admission indicating improvement in functioning.

Based on the 31 pairs, the average CAFAS score was 134.19 at admission. At 3 months into services, the average CAFAS score decreased to 100, which represents a statistically significant improvement in overall daily functioning.

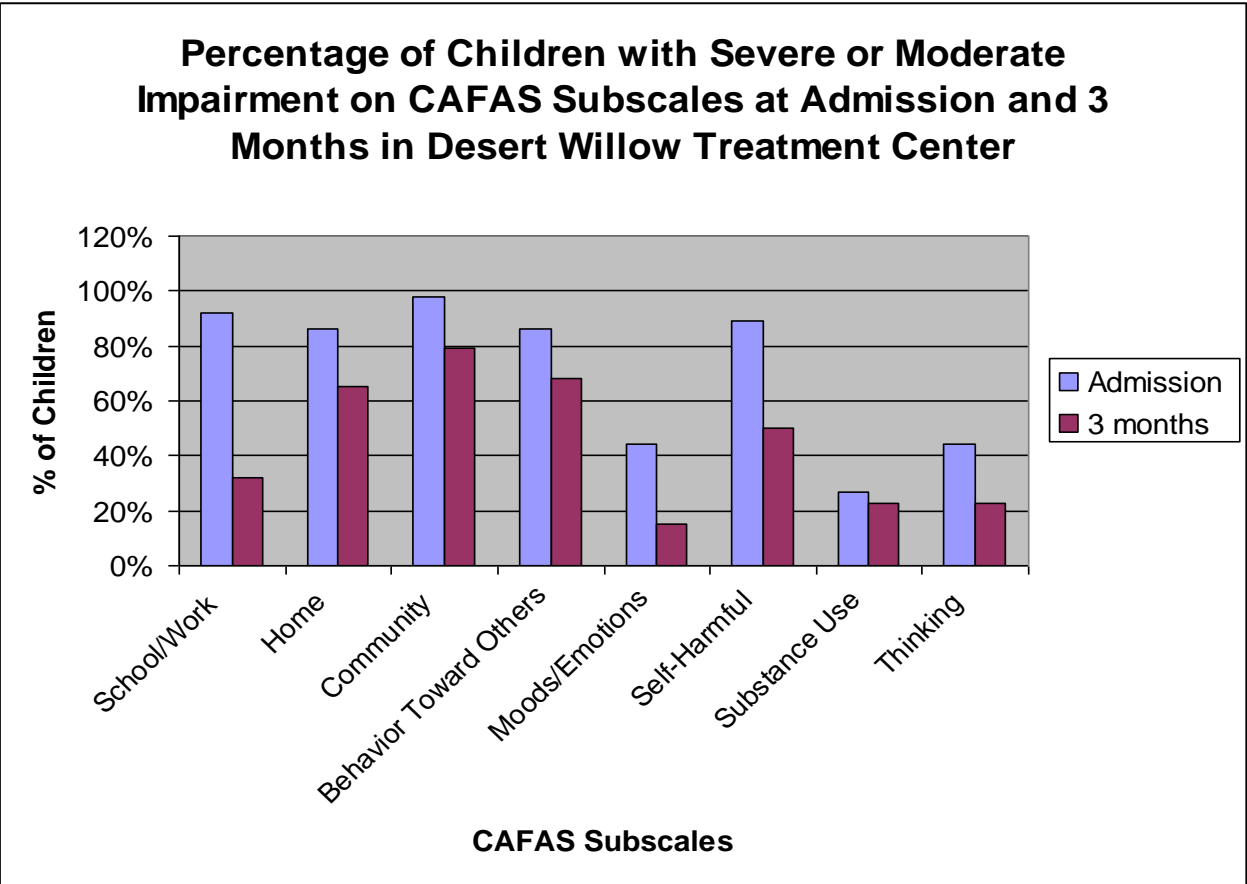


Desert Willow Treatment Center

Desert Willow Treatment Center had a total of 202 admission CAFAS scores. The average total CAFAS admission score was 155.40 with a range of 40 to 230.

Desert Willow Treatment Center CAFAS subscale scores were combined for examination at admission and at 3 months for children served in FY08. Three month subscales scores were selected due to the shorter length of stay for children served in DWTC. There were a total of 64 pairs of CAFAS subscale scores. The graph below reflects the percentage of children who received a score of 20 (moderate impairment) or 30 (severe impairment) on CAFAS subscales at admission and at 3 months. All subscale scores decreased at 3 month from admission indicating improvement in functioning.

Based on the 64 pairs, the average CAFAS score was 163.44 at admission. At 3 months into services, the average CAFAS score decreased to 116.56, which represents a statistically significant improvement in overall daily functioning.

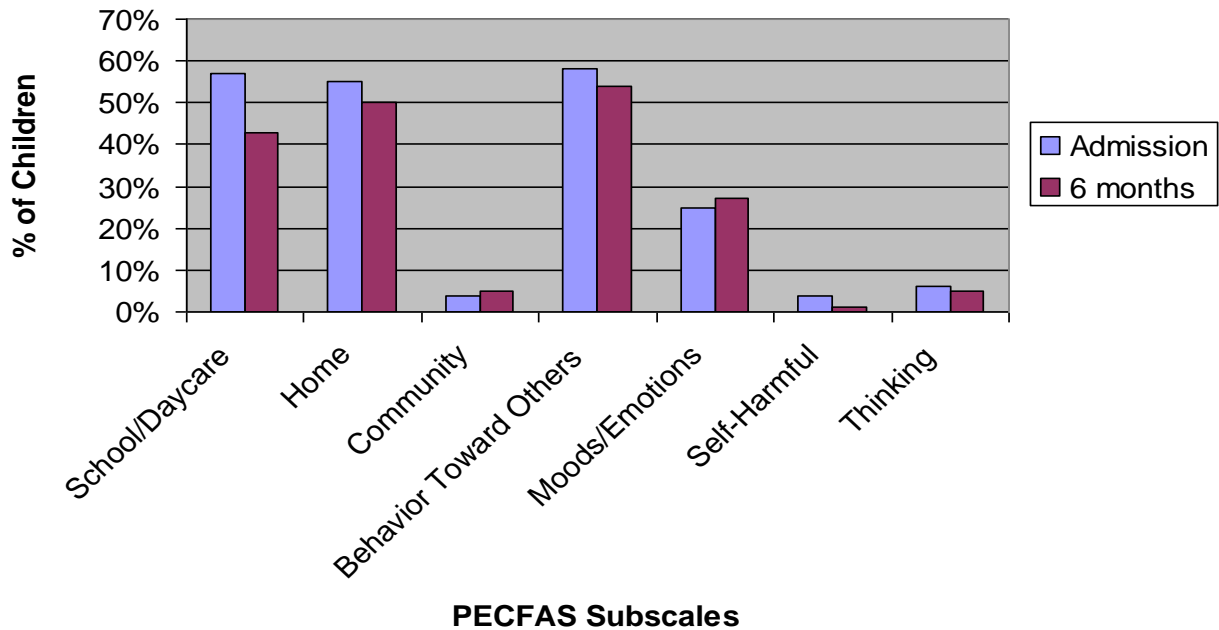


Preschool and Early Childhood Functional Assessment

Preschool and Early Childhood Functional Assessment Scale (PECFAS) (Hodges, 2005), was also designed to assess degree of impairment in functioning of children ages 3-7 years with behavioral, emotional, psychological or psychiatric problems. PECFAS scores range from 0 to 210 with a higher score indicating greater impairment. In FY08, mean total PECFAS scores of 529 children admitted to mental health services statewide was 64.59 with a range of 0 to 180.

Early Childhood Treatment at NNCAS and Early Childhood Mental Health Services at SNCAS were combined to examine PECFAS subscale scores at admission and at 6 months for children served in FY08. There were a total of 120 pairs of PECFAS subscales scores. The graph below reflects the percentage of children who received a score of 20 (moderate impairment) or 30 (severe impairment) on PECFAS subscales at admission and at 6 months. PECFAS subscale scores decreased from admission to 6 months indicating improvement in functioning with the exception of the Community subscale and the Moods/Emotions subscale. Subsequent analysis may yield additional information by contrasting the type and degree of respondent impairment across the two time periods.

Percentage of Children with Severe to Moderate Impairment on PECFAS Subscales at Admission and 6 Months in Early Childhood Services



Diagnosis

Over 35% of the FY 08 children met criteria for more than one diagnostic category. The most prevalent Axis I diagnoses of children at their most recent assessment are reflected in the following age group categories.

Age Group 0-5

- Disruptive Behavior Not Otherwise Specified
- Deprivation/Maltreatment Disorder
- Adjustment Disorder

Age Group 6-12

- Posttraumatic Stress Disorder
- Oppositional Defiant Disorder
- Attention Deficit Hyperactivity Disorder

Age Group 13-18 +

- Major Depressive Disorder
- Posttraumatic Stress Disorder

- Depressive Disorder Not Otherwise Specified
- Oppositional Defiant Disorder
- Attention Deficit Hyperactivity Disorder

Prevalent diagnoses in all age groups for FY08 largely mirror those found in FY07. The diagnoses in Age Group 0-5 were repeated from FY07 and one diagnosis, Adjustment Disorder, has been representative of this group since the first FY06 Descriptive Study.

For Age Group 6-12, Oppositional Defiant Disorder in FY08 replaced Adjustment Disorder from the FY07 results. Two diagnoses, Attention Deficit Hyperactivity Disorder and Posttraumatic Stress Disorder have continued to be representative of this group since the FY06 Descriptive Study.

In Age Group 13-18+, the depressive disorders from FY07 were repeated and were joined by two new diagnoses: Oppositional Defiant Disorder and Posttraumatic Stress Disorder. The Attention Deficit Hyperactivity Disorder diagnosis and the Major Depressive Disorder diagnosis have remained represented in this group since the first FY06 Descriptive Study.

References

Hodges, K. (2005). *Manual for Training Coordinators, Clinical Administrators, and Data Managers*. Ann Arbor, MI: Author.