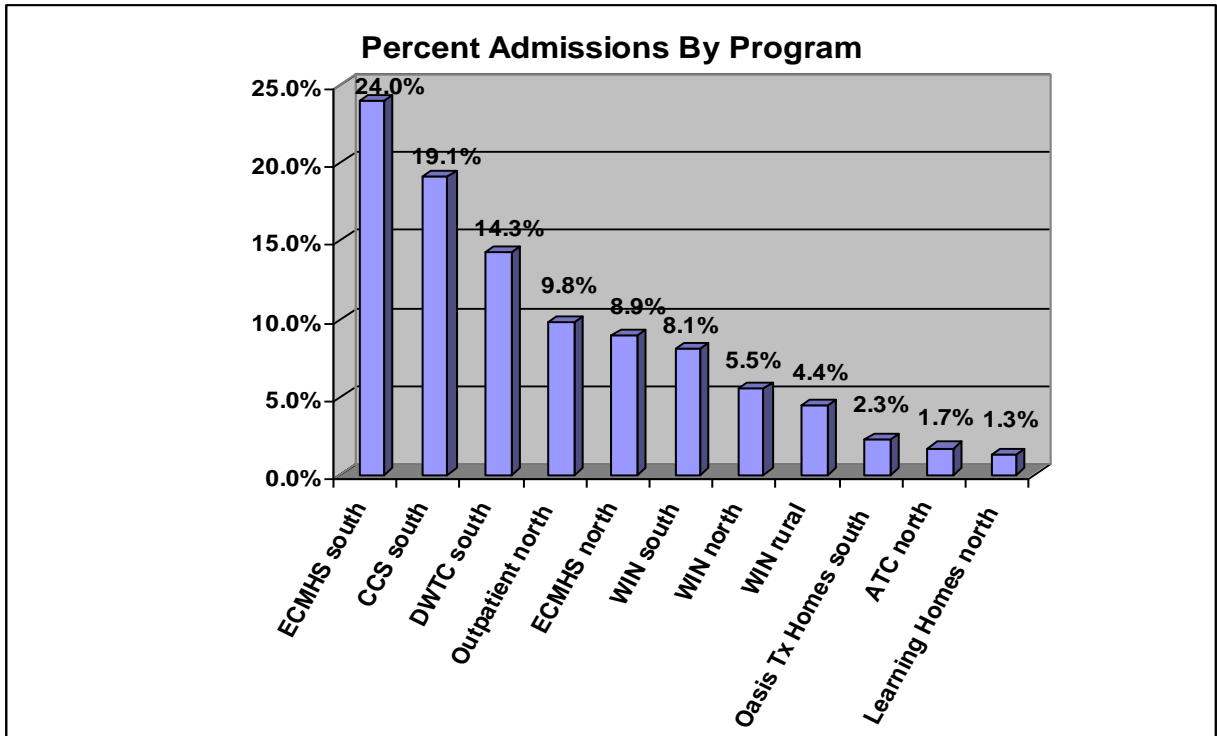


**DIVISION OF CHILD AND FAMILY SERVICES  
DESCRIPTIVE SUMMARY OF MENTAL HEALTH SERVICES FY 06**

The following is the descriptive summary of the children who were admitted to the Division of Child and Family Services (DCFS) Children’s Mental Health Services in FY 06 from July 1, 2005 through June 30, 2006. This descriptive report summarizes the demographic characteristics of the 1198 children admitted for mental health services across the state of Nevada DCFS programs statewide.

**Children Admitted to Mental Health Services by Program in FY06**

Admissions to programs were as follows from most to least admissions. Early Childhood Mental Health Services (ECMHS) in the south accounted for 24.0% of the total admissions, Children’s Clinical Services (CCS) in the south accounted for 19.1%, Desert Willow Treatment Services accounted for 14.3%, and Outpatient Services in the north accounted for 9.8%. The ECMHS in the north accounted for 8.9% of admissions while the Wraparound in Nevada for Children and Their Families (WIN) program in the south accounted for 8.1%. WIN in the north accounted for 5.5%, WIN in the rural counties accounted for 4.4%, Oasis Treatment Homes accounted for 2.3%, the Adolescent Treatment Center (ATC) accounted for 1.7%, and the Family Learning Homes in the north accounted for 1.3%.



Of the 1198 children admitted to DCFS programs across the State of Nevada 827 (69.0%) were served in the south (Clark County), 318 (26.5%) were served in the north (Washoe County), and 53 (4.4%) were served in the rural counties. WIN is the only DCFS mental health service provided in the rural counties.

The 1198 children admitted for mental health services in FY 06 reflect the following demographic characteristics.

### **Age**

The children's ages ranged from four months old through 18 year old at admission to mental health services. The mean age of the children was 10.7 and the median age was 11.4 years old. The following is percent of admissions by age group.

- 0-5 year olds: 28.0% of the admissions
- 6-12 year olds: 29.8% of the admissions
- 13-18 year olds: 42.2% of the admissions

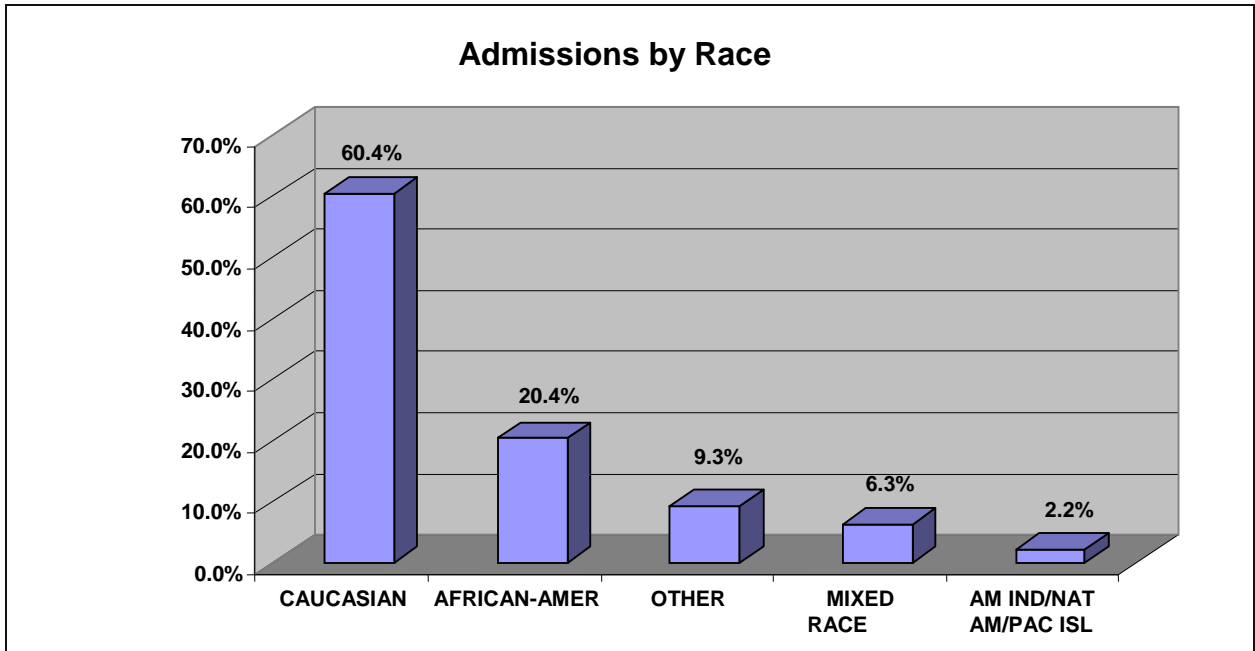
The breakdown of the children in the above age groups reflect that although 42.2% of the children admitted in FY 06 are 13 years old or older, 12 year old and younger group represented 57.8% of the total admissions.

### **Gender**

Males accounted for 62.4% of the admissions and females the remaining 37.6%.

### **Race**

Caucasians made up the majority of admissions accounting for 60.4% of children whose race was known. African-Americans accounted for 20.4%, the category of other races accounted for 9.3%, mixed race was 6.3%, and American Indian/Native American/Asian/Hawaiian/Pacific Islander 2.2%, and 1.4% of children had no one to identify their race or their race was unknown.



### Hispanic Origin

Children of Hispanic origin accounted for 22.0% of those admitted.

### Custody Status

Nearly half (47.2%) of the children admitted to mental health services in DCFS FY 06 were in the custody of their parents. Twenty-four percent of the admissions were children in the custody of Child Welfare Services. The remaining 28.8% were fairly evenly distributed across 14 other custody categories.

### Presenting Problems at Admission

Parents and caregivers are asked to identify problems their child has encountered at admission. Of the 37 problems listed, the four problems identified below accounted for nearly half (45.5%) of all problems reported.

- Adjustment Problems (17.2%)
- Suicide Attempts (10.8%)
- Physical Aggression (9.2%)
- Depression (8.3%)

### Child and Adolescent Functional Assessment Scale

Children entering DCFS Children's Mental Health programs in FY 06 had a mean Child and Adolescent Functional Assessment Scale (CAFAS) score of 109 with a median

CAFAS score of 110. The CAFAS (Hodges, 1999) was designed to assess degree of impairment in children with emotional, behavioral, psychiatric, psychological, or substance-use problems ages 6 to 18. CAFAS scores can range from 0 to 240 with higher scores indicating increased impairment in functioning.

### Diagnosis

Nearly 44% of children had more than one diagnosis at admission. The most prevalent Axis I diagnoses of children at admission are reflected in the following age group categories.

#### 0-5 Age Group

1. Posttraumatic Stress Disorder
2. Attention Deficit/Hyperactivity Disorder
3. Adjustment Disorders

#### 6-12 Age Group

1. Attention Deficit/Hyperactivity Disorder
2. Adjustment Disorders
3. Posttraumatic Stress Disorder

#### 13-18 Age Group

1. Attention Deficit/Hyperactivity Disorder
2. Major Depressive Disorder
3. Adjustment Disorders

Due to the nature of the specialized interventions required, the following diagnostic categories were given special attention: Posttraumatic Stress Disorder, Substance Abuse Disorder, Pervasive Developmental Disorder, and Mental Retardation.

**Posttraumatic Stress Disorder:** 145 children (12.1% of the total admissions) were diagnosed on AXIS I as Posttraumatic Stress Disorder. 63.4% represented males and 36.6% represented females. The following is the age group breakdown of the 145 children.

- 0-5 age group 24.8%
- 6-12 age group 32.4%
- 13-18 age group 42.8%

**Substance Abuse:** 43 youth (3.5% of the total admissions) received the Substance Abuse diagnosis on AXIS I. 58.1% of the 43 youth were males and 41.9% were females. The following is the age group breakdown of the 43 children.

- 0-5 age group - %
- 6-12 age group 2.3%
- 12-18 age group 97.7%

As noted, all but one of the children with substance abuse diagnoses is 12 years old or older. There was only 1 child in the 6-12 year old age group with substance abuse diagnosis.

**Pervasive Developmental Disorders:** 26 children (2.2% of the total admissions) were identified to have an Axis I diagnosis of Pervasive Developmental Disorder (PDD). More males (65.4% of the 26 youth) were identified with PDD than females (34.6%). The following is the age group breakdown of the 26 children.

- 0-5 age group 27%
- 6-12 age group 23%
- 13-18 age group 50%

**Mental Retardation:** 27 children (2.2% of the total admissions) were identified with the diagnosis of Mental Retardation on Axis II.

- In the 0-5 year old age group, 218 of the 328 children had an AXIS II diagnosis and only 6 of those children had a diagnosis of Mental Retardation.
- In the 6-12 year old age group, 141 of the 338 children had an AXIS II diagnosis and 9 of those children had a diagnosis of Mental Retardation.
- In the 13-18 year old age group, 144 of the 476 children had an AXIS II diagnosis and 12 of those children had a diagnosis of Mental Retardation.

The following is the age group breakdown of the 27 children with a diagnosis of Mental Retardation.

- 0-5 age group 22.2%
- 6-12 age group 33.3%
- 13-18 age group 44.4%