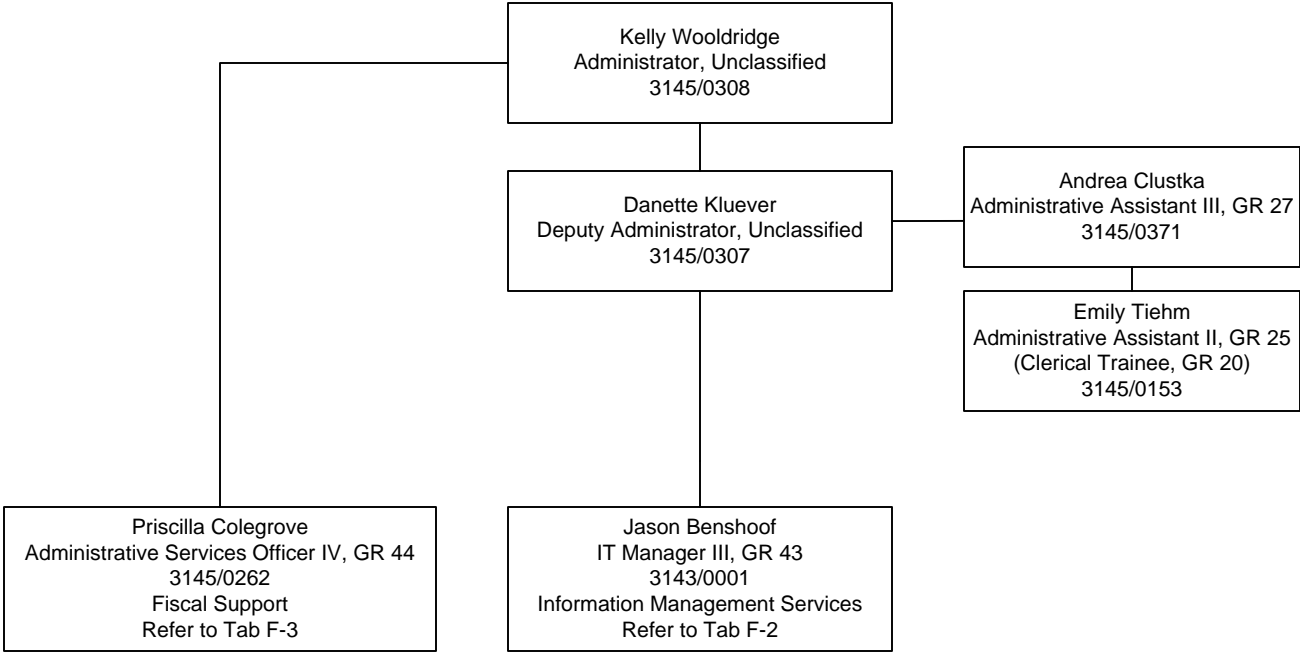


Division of Child and Family Services
Administration
Tab F

Established Date: 12/01/2006
Revised Date: 12/20/2016



Established Date: 12/01/2006
Revised Date: 12/15/2016

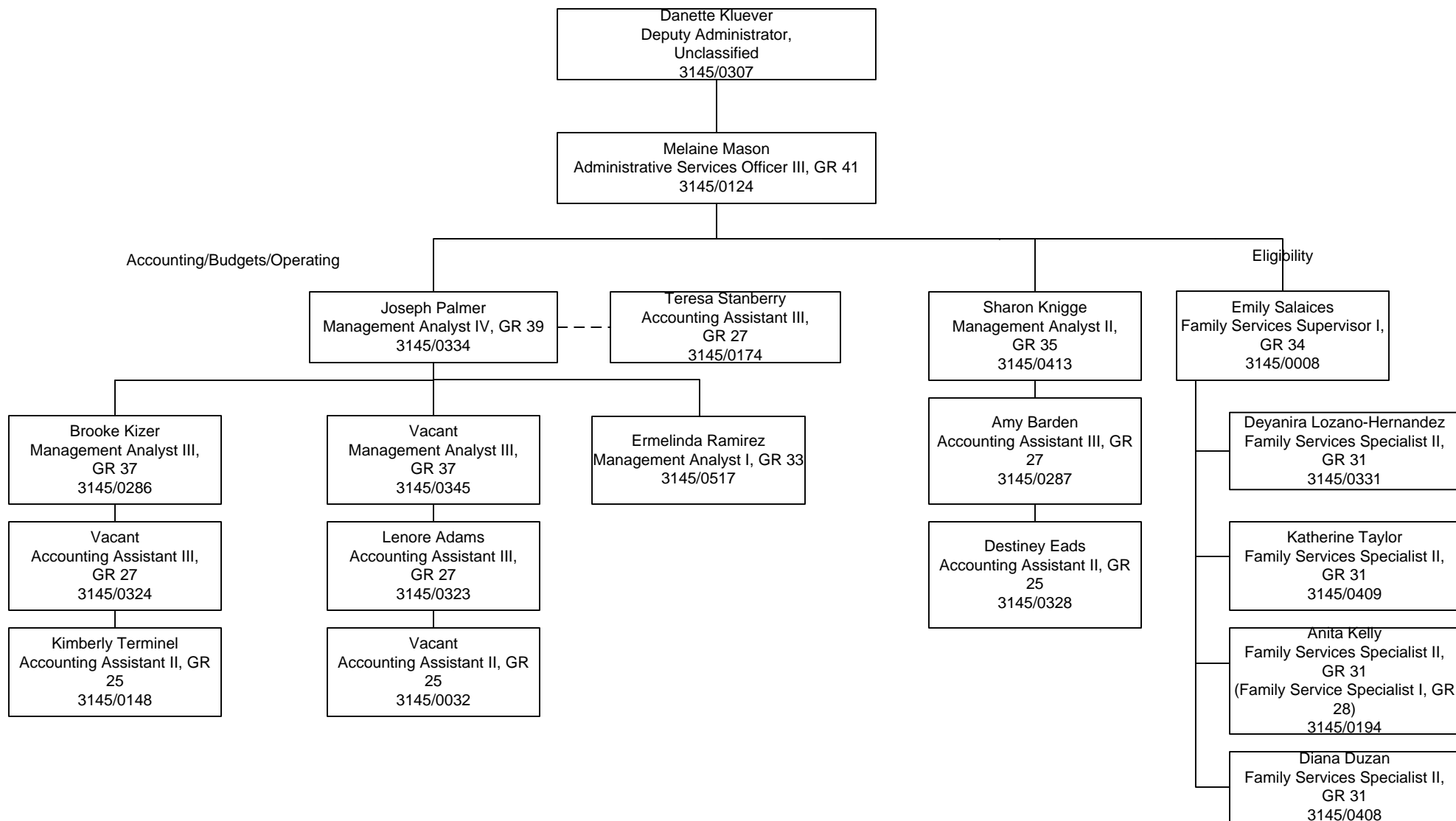
```
graph TD;
    A[Department Director  
GR 45  
3143/0001  
Refer to Tab F-1-A] --> B[Melaine Mason  
Administrative Services  
Officer III, GR 41  
3145/0124  
Central Office  
Refer to Tab F-1-A];
    A --> C[Patrick Rassier  
Administrative Services  
Officer III, GR 41  
3646/0868  
Children's Mental Health  
Refer to Tab F-1-B];
    A --> D[David Anderson  
Administrative Services  
Officer III, GR 41  
3263/0024  
Youth Parole  
Refer to Tab F-1-C];
    A --> E[Penelope Majeske  
Management Analyst IV,  
GR 39  
3143/9000];
    A --> F[Alexia Benshoof  
Management Analyst III  
GR 37  
3143/0063];
    A --> G[Stephen Dotter  
Management Analyst I,  
GR 33  
3143/0506];
    A --> H[Jesse Wellman  
Statistician II,  
GR 31  
3143/0042];
```

The organizational chart for the Department of Corrections is structured as follows:

- Department Director** (GR 45, 3143/0001, Refer to Tab F-1-A)
 - Melaine Mason** (Administrative Services, Officer III, GR 41, 3145/0124, Central Office, Refer to Tab F-1-A)
 - Patrick Rassier** (Administrative Services, Officer III, GR 41, 3646/0868, Children's Mental Health, Refer to Tab F-1-B)
 - David Anderson** (Administrative Services, Officer III, GR 41, 3263/0024, Youth Parole, Refer to Tab F-1-C)
 - Penelope Majeske** (Management Analyst IV, GR 39, 3143/9000)
 - Alexia Benshoof** (Management Analyst III, GR 37, 3143/0063)
 - Stephen Dotter** (Management Analyst I, GR 33, 3143/0506)
 - Jesse Wellman** (Statistician II, GR 31, 3143/0042)

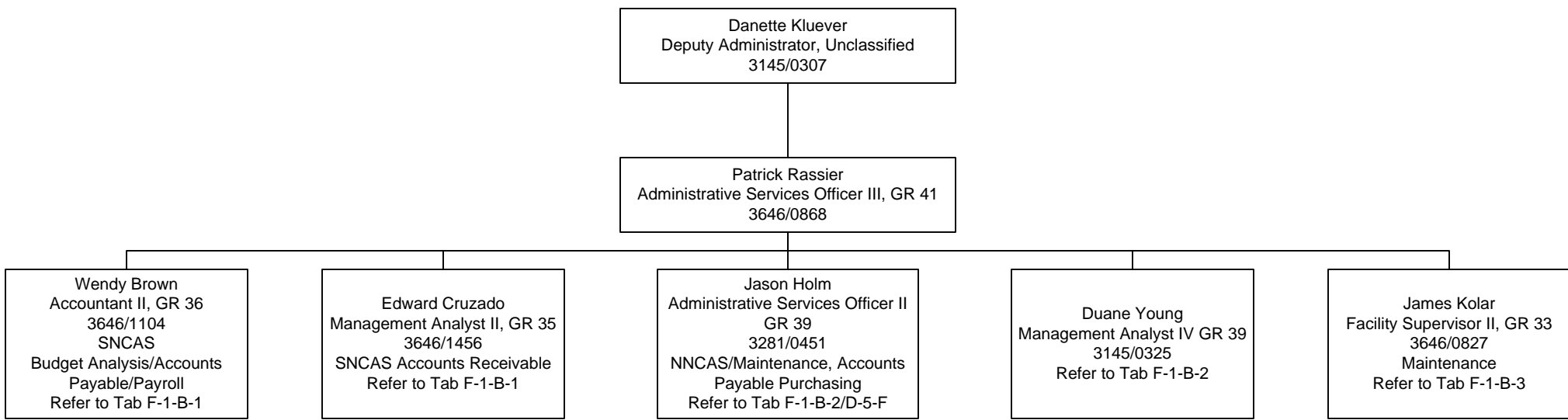
Division of Child and Family Services
Administration
Fiscal Support
Central Office
Tab F-1-A

Established Date: 12/01/2006
Revised Date: 02/15/2017



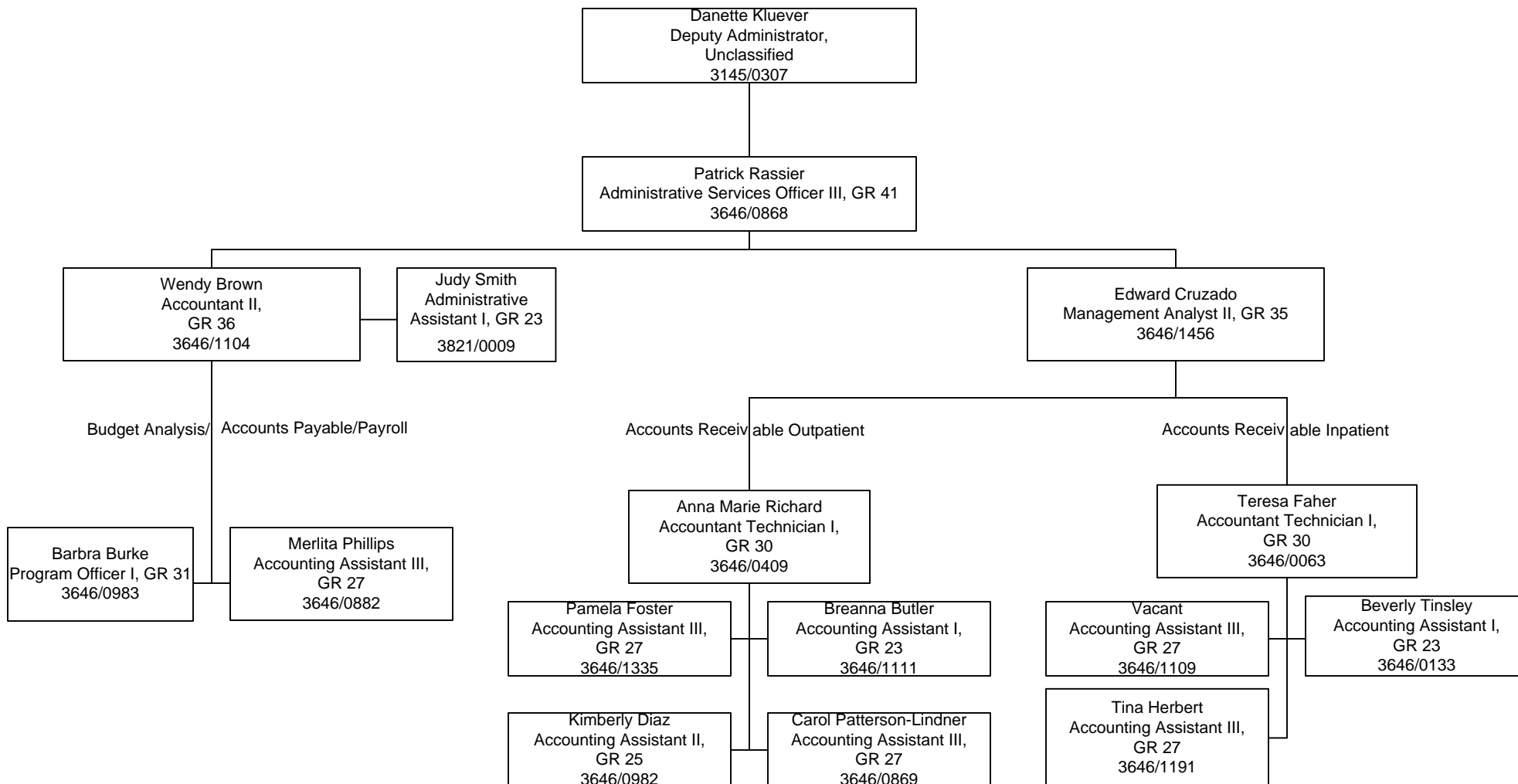
Division of Child and Family Services
Administration
Fiscal Support
Children's Mental Health
Tab F-1-B

Established Date: 12/01/2006
Revised Date: 02/09/2017



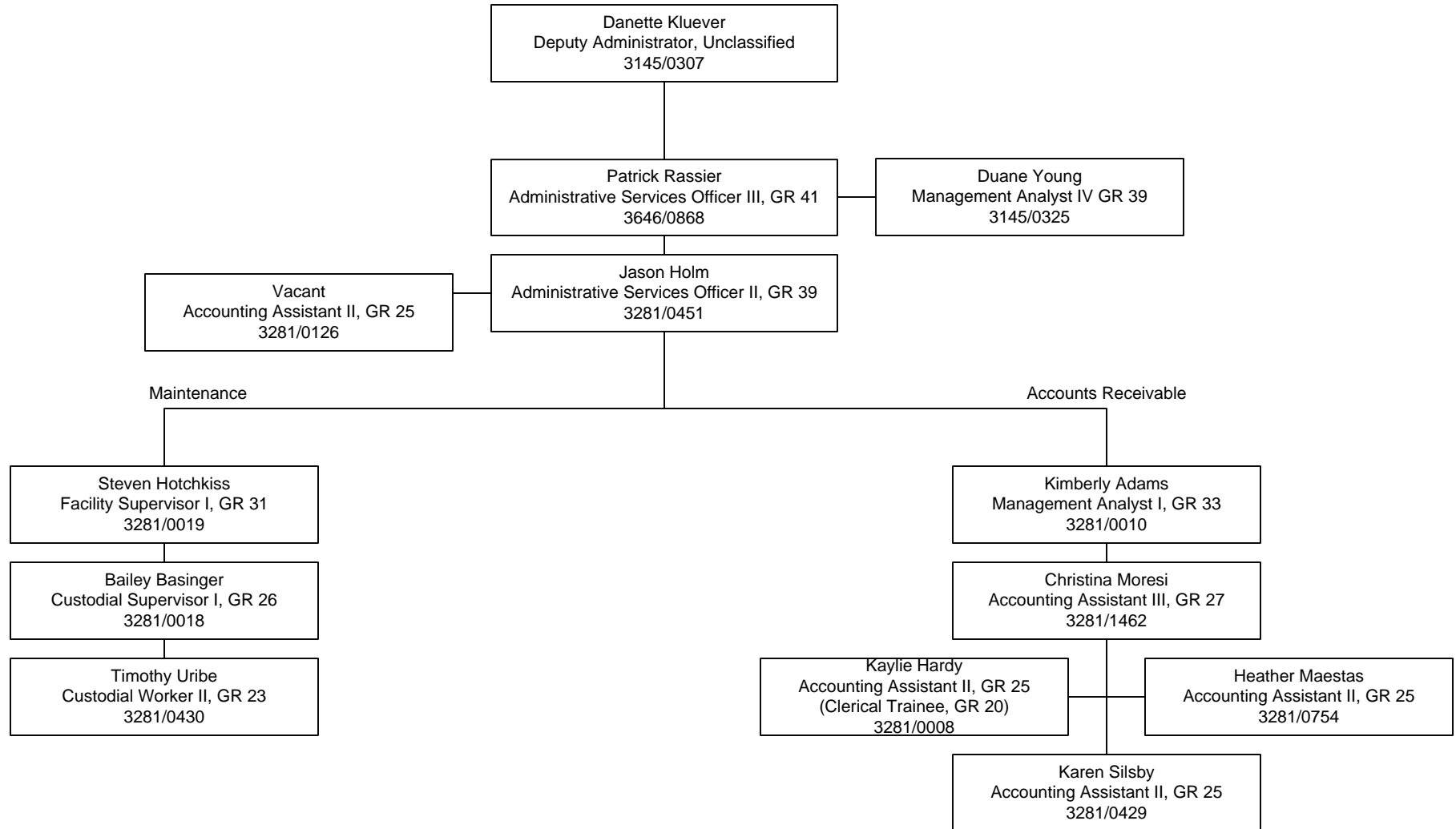
Division of Child and Family Services
Administration
Fiscal Support
Children's Mental Health
SNCAS/Fiscal
Tab F-1-B-1

Established Date: 12/01/2006
Revised Date: 02/09/2017



Division of Child and Family Services
Administration
Fiscal Support
Children's Mental Health
NNCAS/Fiscal
Tab F-1-B-2

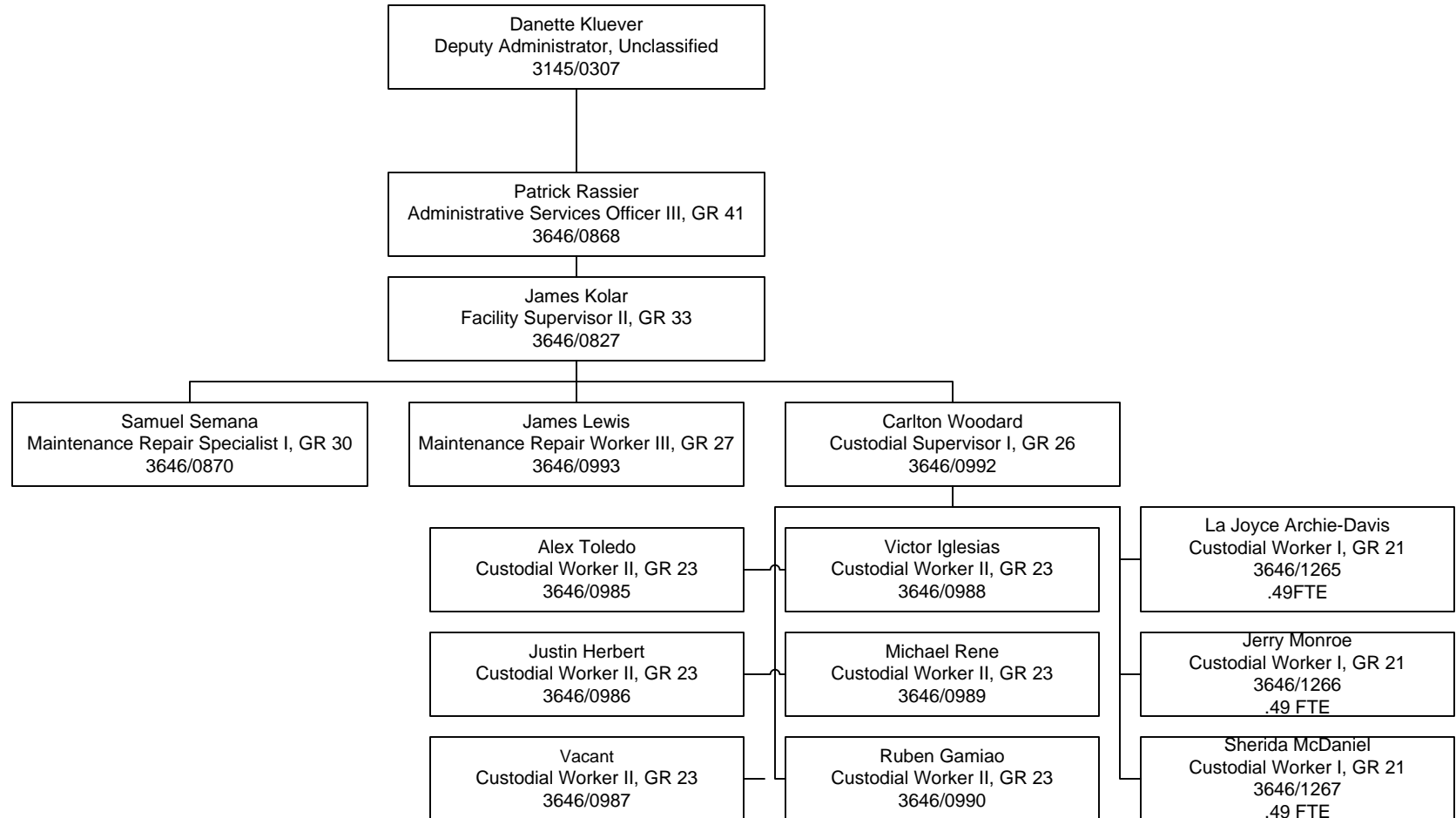
Established Date: 12/01/2006
Revised Date: 02/09/2017



Division of Child and Family Services
Administration
Fiscal Support
Children's Mental Health
Maintenance
Tab F-1-B-3

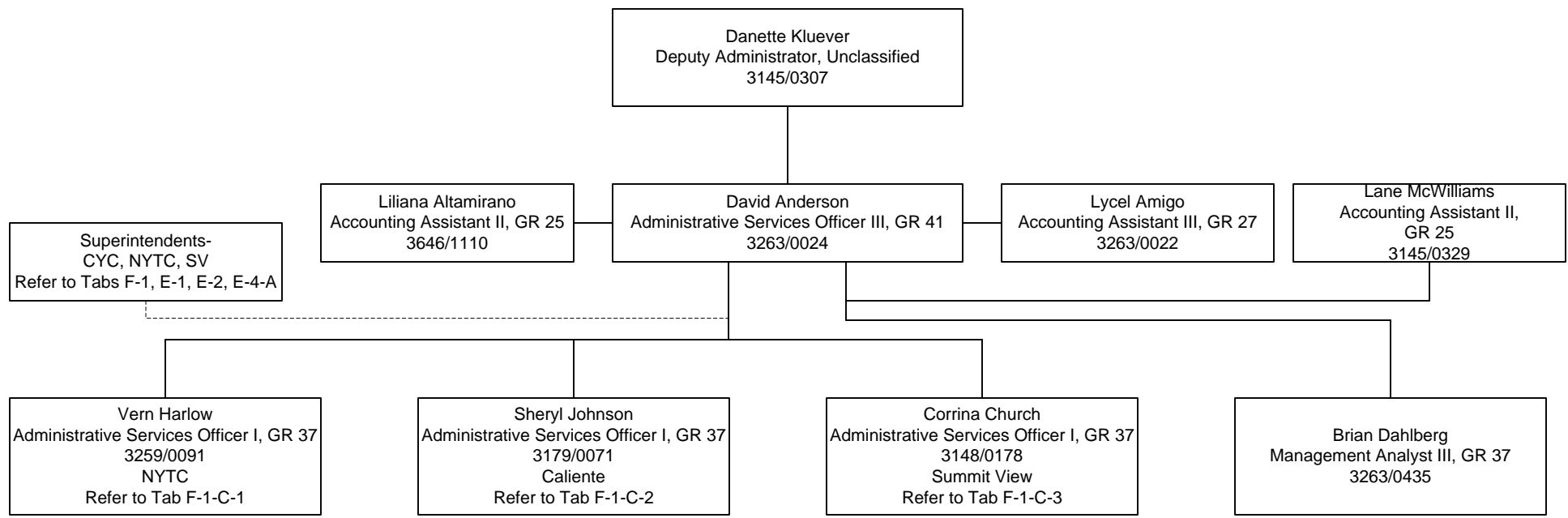
Established Date: 12/01/2006

Revised Date: 09/29/2016



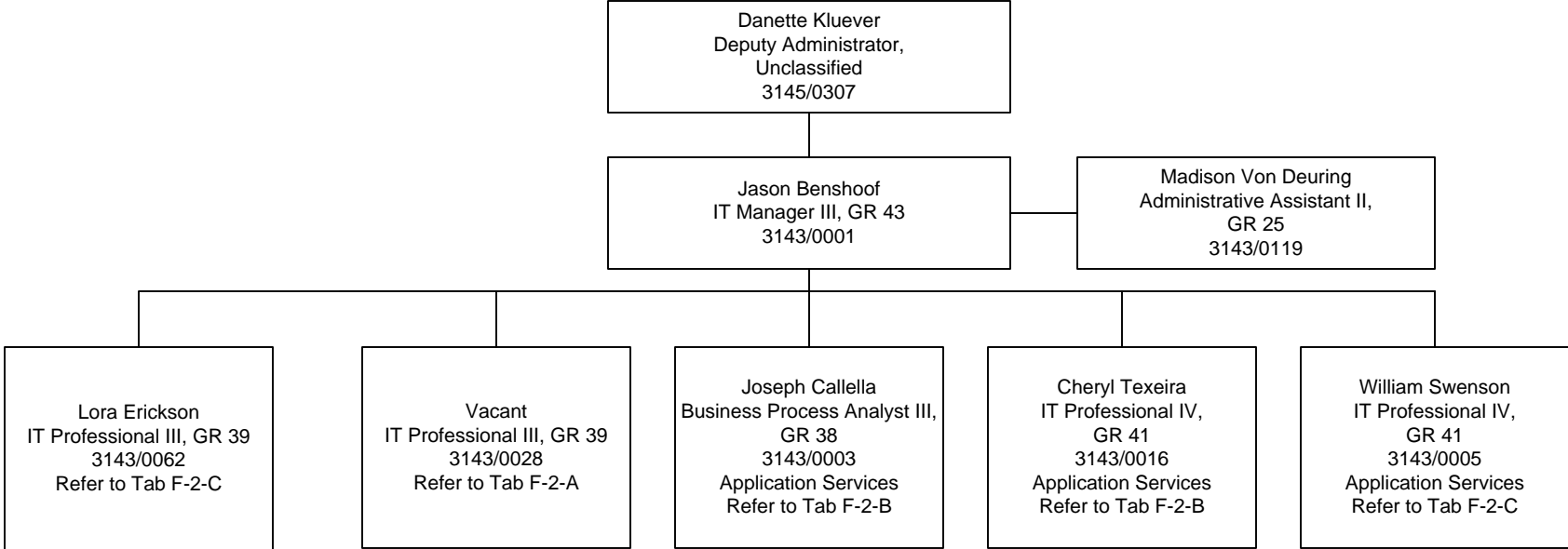
Division of Child and Family Services
Administration
Fiscal Support
Juvenile Services
Youth Parole
Tab F-1-C

Established Date: 12/01/2006
Revised Date: 01/10/2017



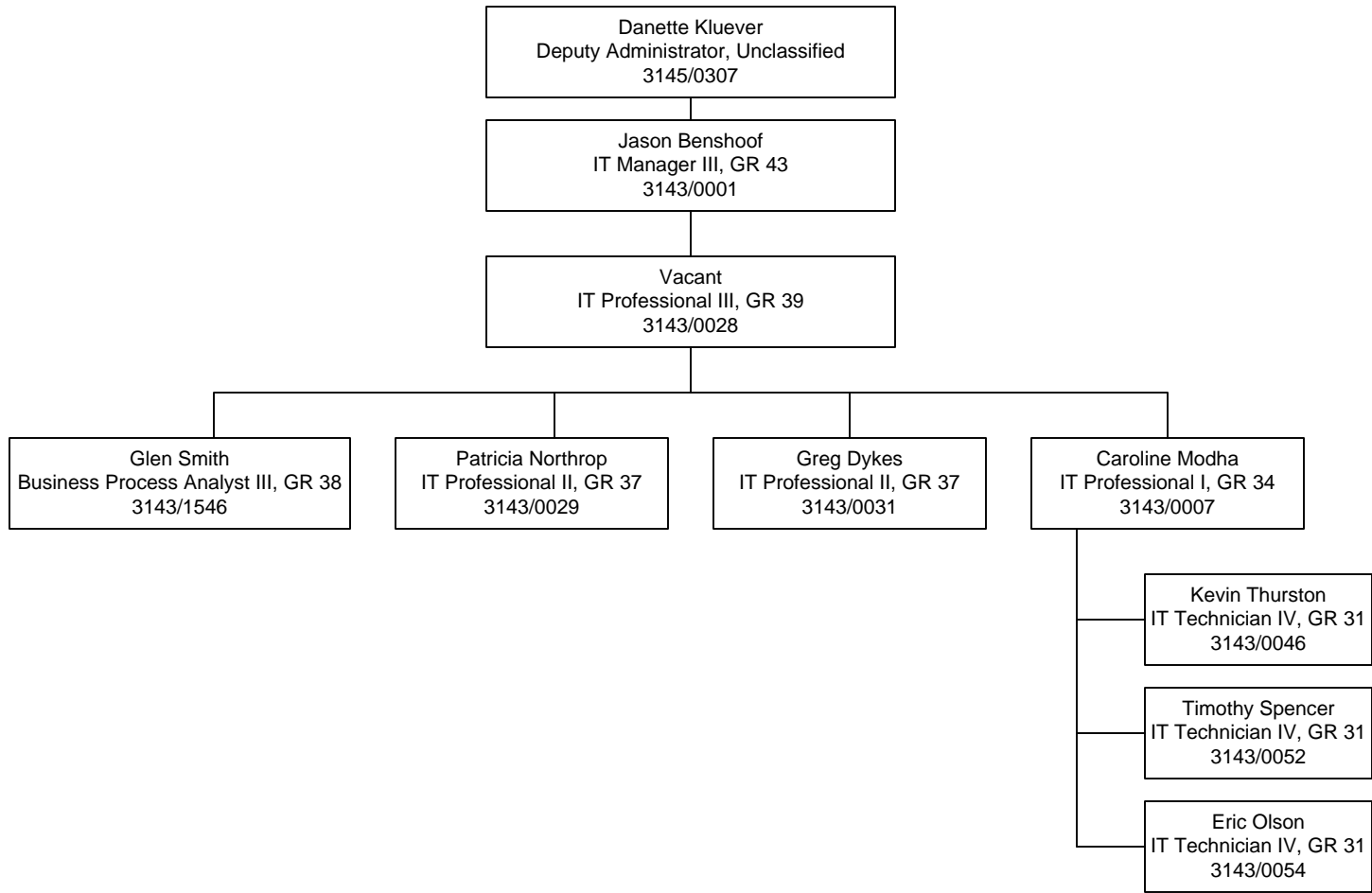
Division of Child and Family Services
Administration
Information Management Services
Tab F-2

Established Date: 12/01/2006
Revised Date: 12/20/2016



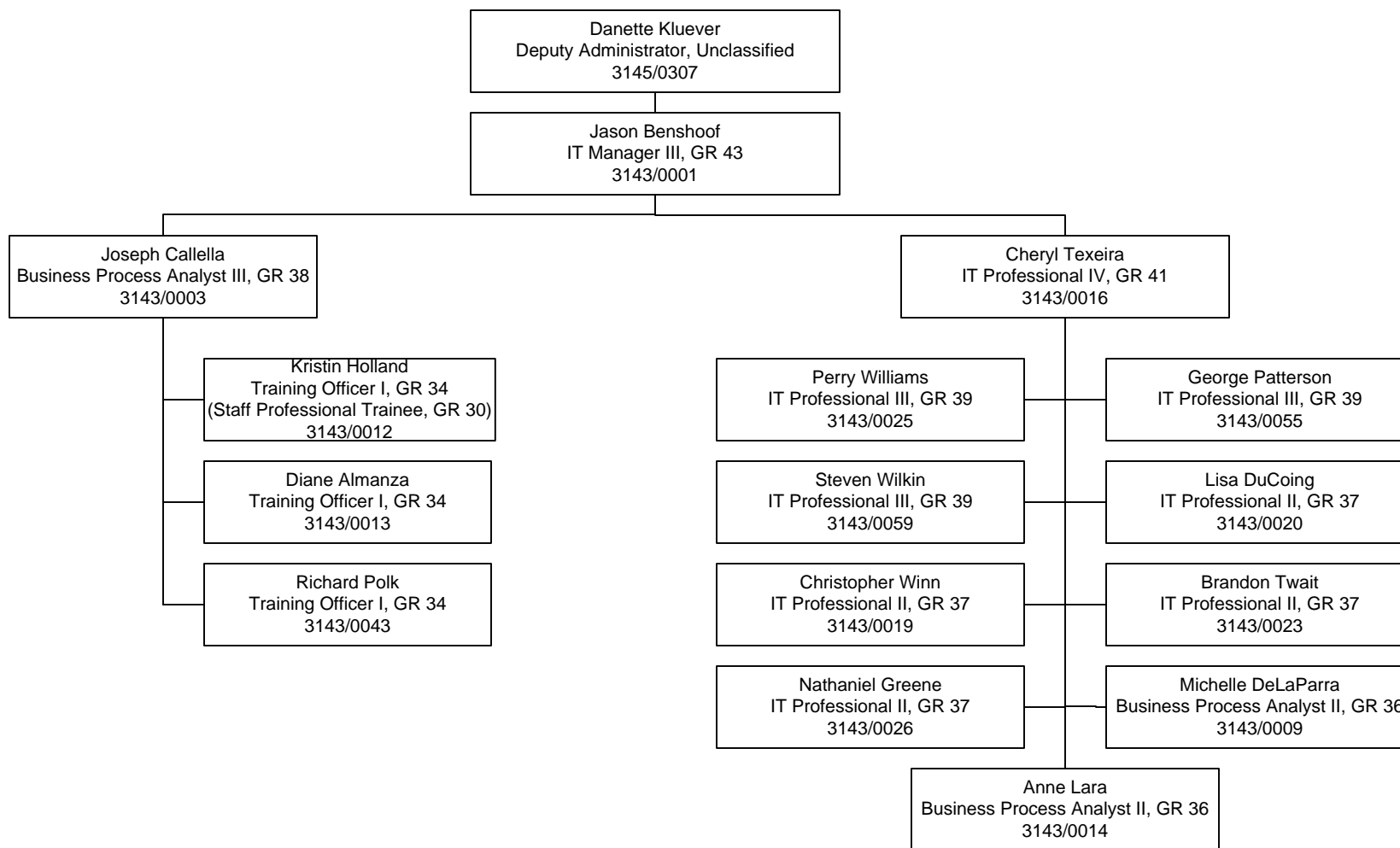
Division of Child and Family Services
Administration
Information Management Services
Desktop / Network
Tab F-2-A

Established Date: 12/01/2006
Revised Date: 09/29/2016



Division of Child and Family Services
Administration
Information Management Services
Application Services
Tab F-2-B

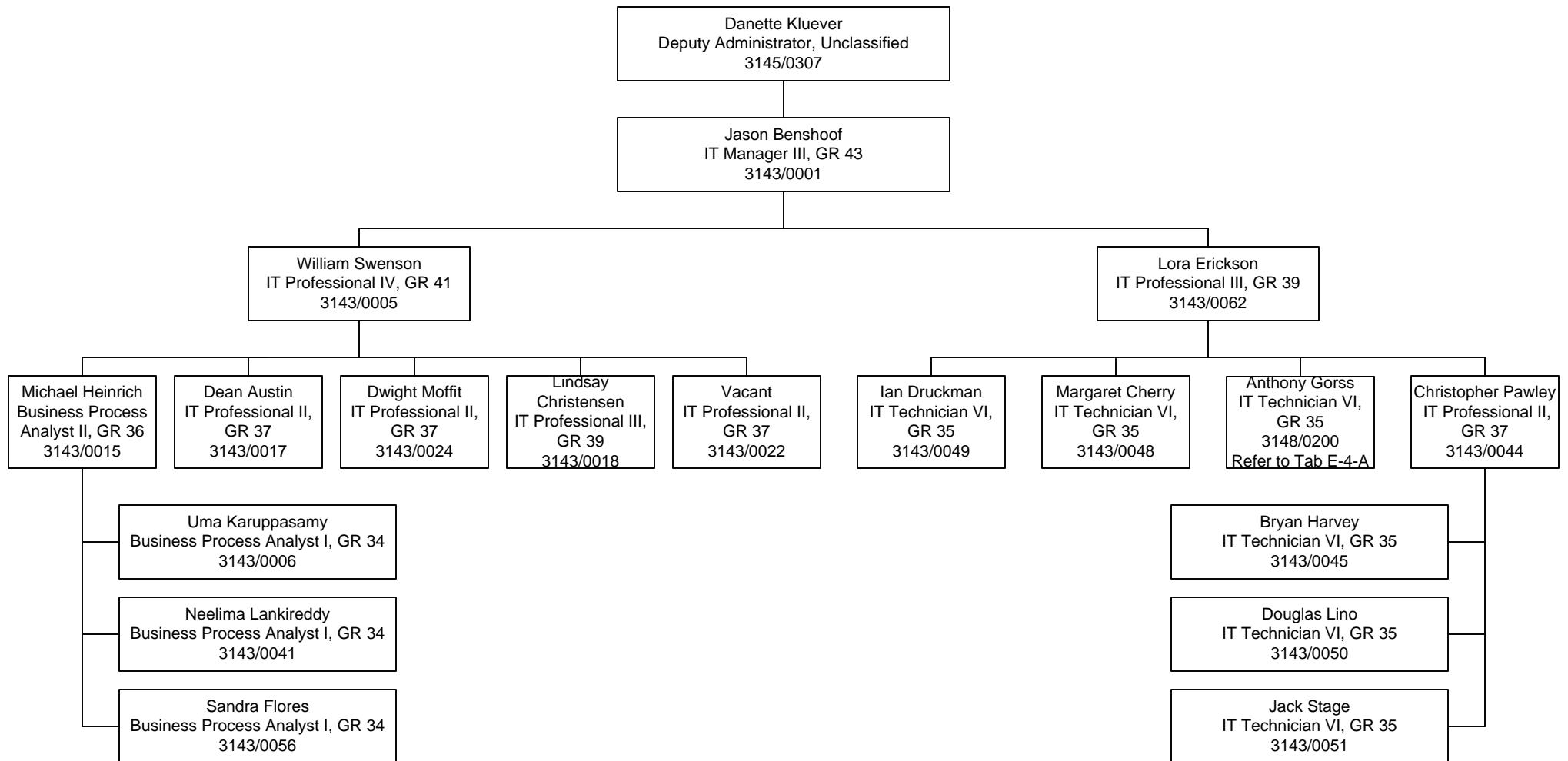
Established Date:12/01/2006
Revised Date: 02/09/2017



Division of Child and Family Services
Administration
Information Management Services
Application Services
Tab F-2-C

Established Date: 12/01/2006

Revised Date: 11/18/2016



Division of Child and Family Services
Administration
Grants Management Unit
Tab F-3

Established Date: 12/15/2016
Revised Date: 02/15/2017

